

13TH  
ANNUAL

# CATTLEMAN'S CONNECTION



## BLACK ANGUS BULL SALE

## FRIDAY, MARCH 7, 2008 - 1:00 P.M.

HEARTLAND LIVESTOCK YARDS, BRANDON, MANITOBA

**STORM DATE: March 10, 2008 - listen to 880 CKLQ Radio for storm date information**

SALE HEADQUARTERS: Lakeview Inn & Suites  
1880 18th Street North, Brandon, Manitoba - (204) 728-1880

**SELLING:** 120 YEARLING BLACK ANGUS BULLS  
19 LONG YEARLING BULLS (born Sept./Oct.)  
(All Guaranteed Breeders)

**SALE DAY PHONE: 204-727-1431**

- **WE STAND BEHIND WHAT WE SELL** - all bulls will be semen tested & breeding soundness evaluated
- **SIGHT UNSEEN PURCHASE PLAN** - your satisfaction guaranteed
- **WINTERING POLICY** - free board on bulls until April 1, 2008
- **POUNDS** - generations of bred on muscle, without sacrificing maternal traits
- **CALVING EASE** - 30% of the bulls selling are suitable for heifers
- **ALL BULLS** - carcass evaluated through ultrasound

Join us for lunch at 11:30 am

AUCTIONEER: Brent Carey 403-549-2478 Cel: 403-650-9028

RINGMEN:

Bryon Wolters 780-853-0599

Ryan Dorran - 403-226-2985 Cel: 403-507-6483

PHOTOGRAPHER:

Grant Rolston Photography  
204-773-6455

View the catalogue on-line with updated weights & scrotal measurements at [www.mountainviewfarms.ca](http://www.mountainviewfarms.ca)

CONSULTANT:

Hugh Ross, Canadian Angus Hall of Fame 403-318-2196

SALE MANAGED BY

*DjH* **Douglas J. Henderson  
& Associates Ltd.**

P.O. Box 5900, Lacombe, Alberta T4L 1X4

Doug & Linda Henderson

Phone: (403) 782-3888 Fax: (403) 782-3849 Cel: (403) 350-8541

email: [djhenderson@platinum.ca](mailto:djhenderson@platinum.ca)

## CONSIGNORS

MOUNTAIN VIEW FARMS LTD.

Scott & Orycia Anderson

SWAN RIVER, MANITOBA

Phone: (204) 734-2503 Fax: (204) 734-5074

Scott Cel: (204) 734-8821 email: [mtnview@mts.net](mailto:mtnview@mts.net)

BROOKMORE ANGUS

Jack & Barb Hart

BROOKDALE, MANITOBA

(204) 476-2607

Cel: (204) 476-6696

# CATTLEMAN'S CONNECTION ANGUS BULL SALE 2008

## CATTLEMAN'S CONNECTION

On behalf of Jack, Barb, Orycia and myself we would like to welcome everyone to our 13th Annual Cattleman's Connection Bull Sale.

We are currently witnessing higher feed costs than we could have ever imagined. Today more than ever cattle have to hang up a high quality carcass and do it efficiently with less days on feed. Feed efficiency is quickly becoming a very important trait in the beef industry. Most of the bulls selling are very easy fleshing and can add some softness back into your cow herd and increase your bottom line. With the margins in the cattle industry tightening a substandard bull will simply just not work. Pay close attention to the EPDs on the bulls selling. Most are in the upper percentiles of the Angus breed for performance and maternal traits.

Come to the sale expecting to see the same thickness and consistency as years past. These bulls have the numbers to back them up. Check out the performance, EPDs, ultrasound data, compare and you decide. These bulls sell with our personal guarantee for soundness and fertility and complete satisfaction.

Many customers have purchased a lot of bulls over the years. There are too many to mention but we appreciate your support and loyalty and hope we can continue to supply you with more great breeding bulls for years to come.

Please join us for lunch at 11:30 sale day. For additional information please feel free to call Jack, Scott or any of our capable sales staff.

Sincerely,  
Cattleman's Connection

### Welcome to the 13th Cattleman's Connection Bull Sale

Welcome to the 13th Cattleman's Connection Bull Sale. Once again the dedicated Angus Breeders from Mountain View Farms and Brookmore Angus are presenting a great offering of young herd sires. Scott and Orycia, Jack and Barb keep producing reputation cattle, cattle that stand the test of time. Both operations are backed by generations of top livestock breeders delivering top quality Angus genetics to the beef cattle industry. These breeders have a commitment to deliver quality breeding stock.

This year as in the past the bulls are sired by the breed's leading sires, there are twenty-four sons of SAV 004 Density 4336, sixteen sons of KMK Alliance 6595, twelve sons of Connealy Freightliner, twelve sons of Boyd Beef Maker 3069, nine sons of SAV Net Worth, ten sons of Boyd On Target, six sons of Bushes Strut 756, seven sons of KFC Bennett Total, six sons of Sitz Alliance 6595, two sons of Rito 4D7 of 2536 33, two sons of GAR Grid Maker, two sons of MVF VRD Dateline 13P, three sons of MVF Dateline 13M, four sons of MVF Focus 2P and seven grandsons of BR New Frontier.

This outstanding set of bulls have been carcass evaluated with ultrasound and semen and performance tested, they are thick topped, deep quartered, good haired sound traveling beef bulls with the right condition to get out and service your cows.

Jack and Barb Hart, Scott and Orycia Anderson invite you to come early, inspect this great group of bulls and have lunch. If you are unable to attend please remember the "Sight Unseen Program". The consignors, sale staff and myself will be available to assist you with evaluation and information on any of the bulls.

If Jack and Barb, Scott and Orycia, any of the sale crew or myself can be of assistance in anyway please contact us.

Yours truly,  
DOUGLAS J. HENDERSON & ASSOCIATES LTD.  
Doug Henderson

P.O. Box 5900, Lacombe, Alberta T4L 1X4 Phone: (403) 782-3888 Fax: (403) 782-3849

# CATTLEMAN'S CONNECTION ANGUS BULL SALE 2008

## SPECIAL OFFERS TO BUYERS

### TRUCKING

Cattleman's Connection consignors will deliver bulls at cost to central stockyard locations in Canada. Cattleman's Connection Consignors will be more than willing to assist you in getting your bull delivered in a timely fashion and as affordable as possible.

### SIGHT UNSEEN PURCHASE PLAN

If you are unable to attend sale day, you may call or send bids to the consignors or any member of the sales management team. Those who are interested in this plan are urged to contact anyone of the consignors to discuss your bull requirements and determine a budget. Every effort will be made to buy you the right bull or bulls, at the right price to make you a repeat customer. If for any reason you are not satisfied with any of the cattle you purchased on order, you are under no obligation to accept them.

**SIGHT UNSEEN  
PURCHASE  
PLAN**

### WINTERING POLICY

Wintering of bulls is free until April 1st, 2008. We ask purchasers to state their intentions for wintering at the time of settlement. *We strongly encourage you to insure your bulls under this policy.*

### CATTLEMAN'S CONNECTION BULL WARRANTY

Cattleman's Connection group guarantees to sell you a bull that is structurally sound, a bull that has passed a semen test and a breeding soundness evaluation by a licensed veterinarian. Should any Cattleman's Connection bull fail to be a satisfactory breeder - unable to physically service a cow or heifer - he will be replaced with a bull of equal value. Should this not be possible, an adjustment will be made to reflect the value of the bull in question, or a credit will be given towards the purchase of another bull.

### IN SHORT, WE GUARANTEE TO PROVIDE YOU WITH A SOUND, BREEDING BULL.

We, however, will not provide replacement or adjustment for physical injury or mismanagement. Bearing this in mind, we stress the importance of insurance on your bull. At no time shall the seller's liability exceed the purchase price of the bull. Should you have a problem with your bull, call

us right away. We will work with you to make sure you are satisfied with your Cattleman's Connection bull.



Mountain View Farms Ltd. & Brookmore Angus use Canadian Angus Performance Program whole herd reporting.

## UNDERSTANDING ULTRASOUND

The first thing producers want to know about ultrasound is: How accurate is it? The answer to the question depends on who does the actual scanning of the animals and who interprets the images. Ultrasound data in this catalogue was collected and analyzed by a technician that is certified by AUP and CUP. This means that this technician has met the standards set by many breed associations. The accuracy, although not perfect, is high enough that bulls selected based on ultrasound, results in positive genetic change in progeny carcass traits. Heritability for carcass traits are moderate to high, which is slightly higher than birth weights, weaning weights, and yearling weights.

**MARBLING (MAR.)** - Marbling is the best indicator that we have to tell us what kind of eating experience we will have when eating beef. Extensive research shows that average AAA and above marbling produces the most satisfied consumers. As marbling increases so does the juiciness, the flavorfulness, and the tenderness. This may not always be true but for the most part AAA marbling produces more satisfied customers than does A or AA marbling carcasses.

3.00 - 3.99	Single A	Standard
4.00 - 4.99	Double AA	Select
above 5.00	Triple AAA	Choice

CARCASS	
MAR.	5.56
BF	9.10
REA	15.55
%LMY	61.94

### BACK FAT (BF mm)

Fat depth influences lean meat yield. Fat bulls have less lean meat/muscle in the carcass. The fat measurement also gives an indication of the bulls fleshing ability. Calves from a bull with very little fat may finish too slowly in the feedlot. Body condition score (fat depth) in females is related to their ability to reach puberty at an early age, produce milk, rebreed, and maintain a short calving interval. On the other hand, bulls carrying excessive fat may suffer reduced fertility.

### RIBEYE AREA (REA in<sup>2</sup>)

The REA is the largest muscle in the body at birth, so REA gives an indication of overall carcass muscling (measured in inches)

### CUTABILITY (% LMY)

Cutability is the percentage lean meat yield in the carcass. Yield grade is an important factor in both Canada and the U.S.A. Producing calves with a high genetic potential for this trait can be an important objective of a breeding program. Back fat will reduce yield by 7 to 8 times what REA will increase yield.

### SUMMARY

Like all traits we should avoid the extremes. Moderation is the key. As producers we need to evaluate our own females and then decide what kind of progeny we want to produce and this should dictate what kind of sire we want to purchase.

**All Bulls Ultrasounded by Rod Wendorff (AUP - CUP Certified)**

## EXPECTED PROGENY DIFFERENCES - EPDS

EPDs are an estimate of how future progeny of each sire can be expected to perform in each of the traits listed. All EPDs are expressed in pounds, either plus or minus. EPDs are followed by % Accuracy - the higher the Accuracy, the higher the reliability.

**BIRTH WEIGHT - BW** - Predicts the difference in average birth weight of a bull's calves compared to the progeny of an average Black Angus bull.

**WEANING WEIGHT - WW** - Indicates the ability of a sire's calves to grow from birth to weaning compared to an average bull.

**YEARLING WEIGHT - YW** - Growth from birth to yearling, compared to the average.

**MILK** - A predictor of a sire's genetic merit for milk and mothering ability as expressed in his daughters as compared to daughters of an average Black Angus bull.

**TOTAL MATERNAL - TM** - Predicts the difference in weaning weights of the sire's daughters' progeny due to the combination of growth genetics and milking ability.

**PLEASE NOTE:** In cases where there is insufficient data to calculate an EPD through evaluation, figures are determined from sire and dam EPDs and reflected as "I" (Interim) with an accuracy of 5%. Predicted EPDs are designated as "PE" (Pedigree Estimate) with 0% accuracy.

### AVERAGE EPDS - CANADIAN BLACK ANGUS BORN IN 2007

ACTUAL BW	ADJ. 205	ADJ. 365	EPDS					DAM'S AGE
			BW	WW	YW	MILK	MAT.	
			+3.0	+37	+66	+15	+34	

# CATTLEMAN'S CONNECTION ANGUS BULL SALE 2008



## KMK ALLIANCE 6595 187

**BW: +2.0 WW: +63 YW: +111 Milk: +24 TM: +56 YG: +48**

- Powerful maternal genetics
- Proven maternal pedigree stacking Alliance, EXT and Bando
- Exceeds Alliance for both curve bender spread and muscle
- Moderate framed, thick easy fleshing
- Ranks in the top 2% of all active sires for feed efficiency

16 SONS SELL



LOT 2 - MVF ALLIANCE 974T

# 2

MOUNTAIN VIEW FARMS LTD.  
**MVF ALLIANCE 974T**

MALE ABA 974T 1421235 ET FEBRUARY 11 2007

SITZ ALLIANCE 6595 <b>KMK ALLIANCE 6595 187 1191922</b> G A R EXT 916		SITZ TRAVELER 8180 SITZ BARBARAMERE JET 2698 N BAR EMULATION EXT G A R BANDO 338		<b>CARCASS</b>	
RITO 9FB3 OF 5H11 FULLBACK <b>MVF TIBBIE 176G 900941</b> MVF TIBBIE 14C		LEACHMAN FULLBACK RITA 5H11 OF 1B14 RITO 9J9 GINGER HILL DUSTER 89 MVF TIBBIE 20W		MAR.	4.00
				BF	6.19
				REA	12.50
				%LMY	62.58

ACTUAL	ADJ.	ADJ.	EPDS					DAM'S AGE
			BW	WW	YW	MILK	MAT.	
88	676	1259	I +3.9 5%	I +49 5%	I +85 5%	I +23 5%	I +48	10

- Full brothers sell as Lots 1 & 3

# 3

MOUNTAIN VIEW FARMS LTD.  
**MVF ALLIANCE 963T**

MALE ABA 963T 1421233 ET FEBRUARY 05 2007

SITZ ALLIANCE 6595 <b>KMK ALLIANCE 6595 187 1191922</b> G A R EXT 916		SITZ TRAVELER 8180 SITZ BARBARAMERE JET 2698 N BAR EMULATION EXT G A R BANDO 338		<b>CARCASS</b>	
RITO 9FB3 OF 5H11 FULLBACK <b>MVF TIBBIE 176G 900941</b> MVF TIBBIE 14C		LEACHMAN FULLBACK RITA 5H11 OF 1B14 RITO 9J9 GINGER HILL DUSTER 89 MVF TIBBIE 20W		MAR.	4.60
				BF	3.33
				REA	11.98
				%LMY	65.07

ACTUAL	ADJ.	ADJ.	EPDS					DAM'S AGE
			BW	WW	YW	MILK	MAT.	
82	648	1083	I +3.9 5%	I +49 5%	I +85 5%	I +23 5%	I +48	10

- Full brothers sell as Lots 1 & 2

# 1

MOUNTAIN VIEW FARMS LTD.  
**MVF ALLIANCE 966T**

MALE ABA 966T 1421234 ET FEBRUARY 07 2007

SITZ ALLIANCE 6595 <b>KMK ALLIANCE 6595 187 1191922</b> G A R EXT 916		SITZ TRAVELER 8180 SITZ BARBARAMERE JET 2698 N BAR EMULATION EXT G A R BANDO 338		<b>CARCASS</b>	
RITO 9FB3 OF 5H11 FULLBACK <b>MVF TIBBIE 176G 900941</b> MVF TIBBIE 14C		LEACHMAN FULLBACK RITA 5H11 OF 1B14 RITO 9J9 GINGER HILL DUSTER 89 MVF TIBBIE 20W		MAR.	4.35
				BF	7.14
				REA	12.97
				%LMY	61.99

ACTUAL	ADJ.	ADJ.	EPDS					DAM'S AGE
			BW	WW	YW	MILK	MAT.	
84	658	1186	I +3.9 5%	I +49 5%	I +85 5%	I +23 5%	I +48	10

- Full brothers sell as Lots 2 & 3
- Maternal brother sells as Lot 117
- Another full brother is being retained at MVF and will see heavy service in 2008
- Dam has been an outstanding producer at MVF



LOT 1 - MVF ALLIANCE 966T

**WE STAND BEHIND  
WHAT WE SELL!**

All bulls are semen tested  
and breeding soundness  
evaluated

# CATTLEMAN'S CONNECTION ANGUS BULL SALE 2008



LOT 4 - MVF ALLIANCE 610T



LOT 6 - MVF ALLIANCE 3T

**4**

MOUNTAIN VIEW FARMS LTD.  
**MVF ALLIANCE 610T**

MALE ABA 610T APPLIED ET FEBRUARY 13 2007

SITZ ALLIANCE 6595  
**KMK ALLIANCE 6595 I87 1191922**  
G A R EXT 916

SITZ TRAVELER 8180  
SITZ BARBARAMERE JET 2698  
N BAR EMULATION EXT  
G A R BANDO 338

CARCASS	
MAR.	4.80
BF	7.14
REA	12.33
%LMY	61.47

GDAR SVF TRAVELER 234D  
**MVF ELLEN 26N 1184659**  
MVF ELLEN 111J

TRAVELER 124 G D A R  
G D A R FOREVER LADY 718  
MVMM WESTERN RITO 47F  
BOTANY ANGUS ELLEN 14G

ACTUAL BW	ADJ. 205	ADJ. 365	EPDS					DAM'S AGE
			BW	WW	YW	MILK	MAT.	
90	600	1157	+2.9 PE	+54 PE	+95 PE	+22 PE	+50	4

- Tremendous hair and phenotype
- Dam is one of the top embryo donors at MVF
- A maternal brother is being retained at MVF and will see heavy service in 2008

**5**

MOUNTAIN VIEW FARMS LTD.  
**MVF ALLIANCE 614T**

MALE ABA 614T APPLIED ET FEBRUARY 25 2007

SITZ ALLIANCE 6595  
**KMK ALLIANCE 6595 I87 1191922**  
G A R EXT 916

SITZ TRAVELER 8180  
SITZ BARBARAMERE JET 2698  
N BAR EMULATION EXT  
G A R BANDO 338

CARCASS	
MAR.	5.05
BF	6.67
REA	10.63
%LMY	60.57

MVMM WESTERN RITO 47F  
**MVF ELLEN 111J 965792**  
BOTANY ANGUS ELLEN 14G

CH 054 RITO 0100  
MVF TIBBIE 16D  
N BAR EMULATION EXT  
BOTANY ANGUS ELLEN 28B

ACTUAL BW	ADJ. 205	ADJ. 365	EPDS					DAM'S AGE
			BW	WW	YW	MILK	MAT.	
74	595	1096	+1.9 PE	+53 PE	+94 PE	+22 PE	+49	8

- A maternal brother sold at the 2001 Cattleman's Connection Bull Sale to Northern Black Angus, Smithers, BC for \$11,000
- A maternal sister sold at the 2002 MVF Production Sale to Botany Angus, Souris, MB for \$12,000 and was later named Reserve Junior Champion Female at the 2003 Manitoba Fall Fair
- Another sister was the Senior Heifer Calf Champion at the 2004 CWA and sold at the Masterpiece Sale for \$6,500 to Jonathon Thomason, Rush Lake, SK
- Big spread from BW EPD to YW EPD

**6**

MOUNTAIN VIEW FARMS LTD.  
**MVF ALLIANCE 3T**

MALE ABA 3T 1419801 JANUARY 25 2007

SITZ ALLIANCE 6595  
**KMK ALLIANCE 6595 I87 1191922**  
G A R EXT 916

SITZ TRAVELER 8180  
SITZ BARBARAMERE JET 2698  
N BAR EMULATION EXT  
G A R BANDO 338

CARCASS	
MAR.	4.75
BF	7.62
REA	12.67
%LMY	61.26

BICKFORD HI SPADE 32Z  
**PEARL OF N.B.A. 3H 936912**  
EBON PEARL OF T L

HOFF HI SPADE S C 491  
BICKFORD BLACKBIRD 21T  
THUNDER LAKE'S EBONY THOR  
MARIE ANN OF THUNDER LAKE

ACTUAL BW	ADJ. 205	ADJ. 365	EPDS					DAM'S AGE
			BW	WW	YW	MILK	MAT.	
80	702	1207	I+2.2 5%	I+42 5%	I+79 5%	I+13 5%	I+34	9

**7**

MOUNTAIN VIEW FARMS LTD.  
**MVF ALLIANCE 62T**

MALE ABA 62T 1419863 FEBRUARY 17 2007

SITZ ALLIANCE 6595  
**KMK ALLIANCE 6595 I87 1191922**  
G A R EXT 916

SITZ TRAVELER 8180  
SITZ BARBARAMERE JET 2698  
N BAR EMULATION EXT  
G A R BANDO 338

CARCASS	
MAR.	5.00
BF	5.71
REA	10.57
%LMY	61.50

PAPA EQUATOR 2928  
**MVF TIBBIE 025M 1120710**  
MVF TIBBIE 10G

PAPA POWER 096  
PAPA ENVIOUS BLACKBIRD 8849  
BON VIEW EMULATION EXT 473  
MVHF TIBBIE 39B

ACTUAL BW	ADJ. 205	ADJ. 365	EPDS					DAM'S AGE
			BW	WW	YW	MILK	MAT.	
92	707	1170	I+3.6 5%	I+55 5%	I+99 5%	I+22 5%	I+49	5

- This is an easy fleshing, soggy made son of KMK Alliance
- If you want to add some easy fleshing ability to your cow herd, this is the bull for you



LOT 7 - MVF ALLIANCE 62T

# CATTLEMAN'S CONNECTION ANGUS BULL SALE 2008



LOT 9 - MVF ALLIANCE 64T

8

MOUNTAIN VIEW FARMS LTD.  
MVF ALLIANCE 63T

MALE ABA 63T 1419838 FEBRUARY 18 2007

SITZ ALLIANCE 6595  
KMK ALLIANCE 6595 I87 1191922  
G A R EXT 916

SITZ TRAVELER 8180  
SITZ BARBARAMERE JET 2698  
N BAR EMULATION EXT  
G A R BANDO 338

CARCASS	
MAR.	4.55
BF	2.86
REA	11.03
%LMY	64.79

KBJ NIGHT TRAIN 384H  
LLB FAVORITE 143K 1018359  
CAN AM FAVORITE 12G

CRESCENT CREEK MAXIMUM 37C  
KBJ MISS ROSE 136D  
RITO 9FB3 OF 5H11 FULLBACK  
CAN AM FAVORITE 32B

ACTUAL BW	ADJ. 205	ADJ. 365	EPDS					DAM'S AGE
			BW	WW	YW	MILK	MAT.	
96	701	1115	I+3.7 5%	I+55 5%	I+98 5%	I+22 5%	I+49	7

- Tremendous EPDs with this calf

9

MOUNTAIN VIEW FARMS LTD.  
MVF ALLIANCE 64T

MALE ABA 64T 1419845 FEBRUARY 18 2007

SITZ ALLIANCE 6595  
KMK ALLIANCE 6595 I87 1191922  
G A R EXT 916

SITZ TRAVELER 8180  
SITZ BARBARAMERE JET 2698  
N BAR EMULATION EXT  
G A R BANDO 338

CARCASS	
MAR.	4.20
BF	6.67
REA	13.33
%LMY	62.76

CONNELLY DATELINE  
MVF BLACKBIRD 23L 1056631  
HCA BLACKBIRD 13J

D H D TRAVELER 6807  
EILA EILA OF CONANGA  
BROOKMORE EXTRA 145D  
BELMORAL BLACKBIRD 39'91

ACTUAL BW	ADJ. 205	ADJ. 365	EPDS					DAM'S AGE
			BW	WW	YW	MILK	MAT.	
90	737	1368	I+2.6 5%	I+51 5%	I+91 5%	I+15 5%	I+41	6

- This is a powerful bull, extremely thick quartered and big topped, excellent hair and huge spread from BW to YW EPDs.
- Serious beef producers take a good look here



LOT 13 - MVF ALLIANCE 86T

10

MOUNTAIN VIEW FARMS LTD.  
MVF ALLIANCE 67T

MALE ABA 67T 1419832 FEBRUARY 19 2007

SITZ ALLIANCE 6595  
KMK ALLIANCE 6595 I87 1191922  
G A R EXT 916

SITZ TRAVELER 8180  
SITZ BARBARAMERE JET 2698  
N BAR EMULATION EXT  
G A R BANDO 338

CARCASS	
MAR.	4.60
BF	5.71
REA	11.02
%LMY	61.86

TC STOCKMAN 365  
MVF ELLEN ERICA 73K 1017422  
ELLEN ERICA E9

TC STOCKMAN  
TC PRIDE 0014  
MVF MACKENZIE 24A  
ELLEN ERICA MCB 137'84

ACTUAL BW	ADJ. 205	ADJ. 365	EPDS					DAM'S AGE
			BW	WW	YW	MILK	MAT.	
103	745	1314	I+4.1 5%	I+48 5%	I+88 5%	I+18 5%	I+42	7

11

MOUNTAIN VIEW FARMS LTD.  
MVF ALLIANCE 81T

MALE ABA 81T 1421551 FEBRUARY 24 2007

SITZ ALLIANCE 6595  
KMK ALLIANCE 6595 I87 1191922  
G A R EXT 916

SITZ TRAVELER 8180  
SITZ BARBARAMERE JET 2698  
N BAR EMULATION EXT  
G A R BANDO 338

CARCASS	
MAR.	5.40
BF	6.19
REA	12.22
%LMY	62.35

MVF STOCKMAN 45H  
CCL JENNY 32'00 1030324  
BELVIN JENNY 88'97

TC STOCKMAN 365  
DODSWOOD ENCHANTRESS MAX-90  
D B ULTRA 55  
BELVIN JENNY 19'95

ACTUAL BW	ADJ. 205	ADJ. 365	EPDS					DAM'S AGE
			BW	WW	YW	MILK	MAT.	
82	700	1238	I+2.8 5%	I+48 5%	I+91 5%	I+14 5%	I+38	7

12

MOUNTAIN VIEW FARMS LTD.  
MVF ALLIANCE 82T

MALE ABA 82T 1419811 FEBRUARY 24 2007

SITZ ALLIANCE 6595  
KMK ALLIANCE 6595 I87 1191922  
G A R EXT 916

SITZ TRAVELER 8180  
SITZ BARBARAMERE JET 2698  
N BAR EMULATION EXT  
G A R BANDO 338

CARCASS	
MAR.	5.30
BF	5.24
REA	11.36
%LMY	62.63

MERIT 6105  
LADY ANN OF PEAK DOT 965H 943617  
LADY ANN OF PEAK DOT 408D

SANDY BAR WONDERER 24D  
MERIT PRIDE 4077  
TURBULENCE 167 A O  
WINDOVER LADY ANN 48X

ACTUAL BW	ADJ. 205	ADJ. 365	EPDS					DAM'S AGE
			BW	WW	YW	MILK	MAT.	
92	682	1262	I+3.6 5%	I+49 5%	I+89 5%	I+20 5%	I+44	9

- Excellent hair and well balanced EPDs

13

MOUNTAIN VIEW FARMS LTD.  
MVF ALLIANCE 86T

MALE ABA 86T 1419848 FEBRUARY 26 2007

SITZ ALLIANCE 6595  
KMK ALLIANCE 6595 I87 1191922  
G A R EXT 916

SITZ TRAVELER 8180  
SITZ BARBARAMERE JET 2698  
N BAR EMULATION EXT  
G A R BANDO 338

CARCASS	
MAR.	4.55
BF	6.19
REA	13.02
%LMY	63.0

CONNELLY DATELINE  
MVF BLACKCAP 29L 1056552  
MVF BLACKCAP 89G

D H D TRAVELER 6807  
EILA EILA OF CONANGA  
S A V 598 BANDO 5091  
CRESCENT CREEK BLACKCAP 84E

ACTUAL BW	ADJ. 205	ADJ. 365	EPDS					DAM'S AGE
			BW	WW	YW	MILK	MAT.	
96	785	1423	I+2.6 5%	I+51 5%	I+88 5%	I+18 5%	I+43	6

- This calf has been a standout since spring - a whole lot of muscle and very easy fleshing best describes this bull
- Dam is a tremendous Conneally Dateline daughter

# CATTLEMAN'S CONNECTION ANGUS BULL SALE 2008



LOT 14 - MVF ALLIANCE 89T



LOT 16 - MVF ALLIANCE 156T

## 14

MOUNTAIN VIEW FARMS LTD.  
MVF ALLIANCE 89T

MALE ABA 89T 1419972 FEBRUARY 26 2007

SITZ ALLIANCE 6595  
KMK ALLIANCE 6595 187 1191922  
G A R EXT 916

SITZ TRAVELER 8180  
SITZ BARBARAMERE JET 2698  
N BAR EMULATION EXT  
G A R BANDO 338

CARCASS	
MAR.	4.20
BF	5.24
REA	11.34
%LMY	62.61

WESTERN WIDESPREAD 1L  
MVF TIBBIE 320P 1270561  
MVF TIBBIE 34L

WHITSTONE WIDESPREAD MB  
BDM BLUE LADY ERICA 126'95  
TC STOCKMAN 365  
MVKD TIBBIE 850H

ACTUAL BW	ADJ. 205	ADJ. 365	EPDS					DAM'S AGE	
			BW	WW	YW	MILK	MAT.	AGE	
70	715	1241	I +3.7 5%	I +57 5%	I +100 5%	I +22 5%	I +50	3	

- Tremendous EPDs, easy fleshing, thick made, awesome hair

CHECK OUT OUR  
SIGHT UNSEEN PURCHASE PLAN

Your Satisfaction is Guaranteed!

## 15

MOUNTAIN VIEW FARMS LTD.  
MVF ALLIANCE 91T

MALE ABA 91T 1419900 FEBRUARY 27 2007

SITZ ALLIANCE 6595  
KMK ALLIANCE 6595 187 1191922  
G A R EXT 916

SITZ TRAVELER 8180  
SITZ BARBARAMERE JET 2698  
N BAR EMULATION EXT  
G A R BANDO 338

CARCASS	
MAR.	4.30
BF	7.62
REA	11.89
%LMY	60.62

DESSA TRAVELER 4E  
MVF TIBBIE 252N 1175149  
MVF TIBBIE 113G

Q A S TRAVELER 23-4  
DOUBLE FOUR BARBARA 38Z  
G D A R EXECUTIVE 727  
MVF TIBBIE 20D

ACTUAL BW	ADJ. 205	ADJ. 365	EPDS					DAM'S AGE	
			BW	WW	YW	MILK	MAT.	AGE	
81	748	1148	I +2.2 5%	I +41 5%	I +80 5%	I +18 5%	I +38	4	

- Big spread from BW to YW EPDs with this calf
- Easy fleshing, thick in a moderate framed package

## 16

MOUNTAIN VIEW FARMS LTD.  
MVF ALLIANCE 156T

MALE ABA 156T APPLIED ET MARCH 13 2007

SITZ ALLIANCE 6595  
KMK ALLIANCE 6595 187 1191922  
G A R EXT 916

SITZ TRAVELER 8180  
SITZ BARBARAMERE JET 2698  
N BAR EMULATION EXT  
G A R BANDO 338

CARCASS	
MAR.	5.55
BF	6.67
REA	15.09
%LMY	64.20

VERMILION DATELINE 7078  
MVF TIBBIE 60M 114706  
MVHF TIBBIE 39B

CONNEALY DATELINE  
VERMILION BLACKBIRD 5044  
V D A R NEW TREND 315  
MVHF TIBBIE 31Z

ACTUAL BW	ADJ. 205	ADJ. 365	EPDS					DAM'S AGE	
			BW	WW	YW	MILK	MAT.	AGE	
102	931	1408	+4.2 PE	+56 PE	+101 PE	+22 PE	+50	5	

- Tremendous performance, awesome EPDs best describe this bull
- A maternal brother sold at the 2005 Cattleman's Connection Bull Sale to Marlene Lyons, Roblin, MB for \$4,200. A full brother sold at the 2006 Cattleman's Connection Bull Sale to Westwood Land & Cattle Company, Moosimin, SK for \$6,000
- Dam is an embryo donor at MVF and embryos have been exported to John Elliott's Rawbourn Herd in the UK
- If you are looking to add pounds to your next calf crop without sacrificing maternal traits this could be the bull for you



LOT 15 - MVF ALLIANCE 91T

# CATTLEMAN'S CONNECTION ANGUS BULL SALE 2008



## K C F BENNETT TOTAL

**BW: -0.1 WW: +44 YW: +85 Milk: +24 TM: +46 YG: +41**

- Bennet Total has emerged as one of the best sons of Alliance 6595 for combining physical, superiority, performance and carcass excellence
- Daughters are perfect in udder, structure and teat size

7 SONS SELL

### 17

## BROOKMORE ANGUS BROOKMORE TOTAL 4T

MALE JVJ 4T 1376061 JANUARY 04 2007

SITZ ALLIANCE 6595  
**K C F BENNETT TOTAL 1083033**  
EXT OF CONANGA 6790

SITZ TRAVELER 8180  
SITZ BARBARAMERE JET 2698  
N BAR EMULATION EXT  
LADY ENCHANTRESS OF CONANGA

CARCASS	
MAR.	4.60
BF	13.33
REA	13.17
%LMY	55.82

S A F 598 BANDO 5175  
**BROOKMORE ERICETTE 238R 1293349**  
BROOKMORE ERICETTE 135M

BON VIEW BANDO 598  
S A F ROYAL LASS 1002  
BENCHMARK MAGIC MAN 007  
MVF ERICETTE 62J

ACTUAL BW	ADJ. 205	ADJ. 365	EPDS					MAT.	DAM'S AGE
			BW	WW	YW	MILK			
68	681	1275	0.0 37%	43 30%	85 26%	22 22%	44	2	

### 18

## BROOKMORE ANGUS BROOKMORE TOTAL 5T

MALE JVJ 5T 1376028 JANUARY 05 2007

SITZ ALLIANCE 6595  
**K C F BENNETT TOTAL 1083033**  
EXT OF CONANGA 6790

SITZ TRAVELER 8180  
SITZ BARBARAMERE JET 2698  
N BAR EMULATION EXT  
LADY ENCHANTRESS OF CONANGA

CARCASS	
MAR.	5.00
BF	9.52
REA	14.63
%LMY	60.90

MVF STOCKMAN 45H  
**BROOKMORE KARAMA 76R 1293169**  
BROOKMORE KARAMA 130E

TC STOCKMAN 365  
DODSWOOD ENCHANTRESS MAX-90  
EARLY SUNSET EXTRA 30Z  
BROOKMORE KARAMA 70T

ACTUAL BW	ADJ. 205	ADJ. 365	EPDS					MAT.	DAM'S AGE
			BW	WW	YW	MILK			
82	784	1477	2.5 37%	48 30%	87 26%	20 22%	44	2	

### 19

## BROOKMORE ANGUS BROOKMORE TOTAL 11T

MALE JVJ 11T 1376043 JANUARY 07 2007

SITZ ALLIANCE 6595  
**K C F BENNETT TOTAL 1083033**  
EXT OF CONANGA 6790

SITZ TRAVELER 8180  
SITZ BARBARAMERE JET 2698  
N BAR EMULATION EXT  
LADY ENCHANTRESS OF CONANGA

CARCASS	
MAR.	5.0
BF	10.48
REA	14.41
%LMY	59.75

MVF STOCKMAN 45H  
**BROOKMORE MAIDEN 114R 1293228**  
BROOKMORE MAIDEN 155J

TC STOCKMAN 365  
DODSWOOD ENCHANTRESS MAX-90  
BROOKMORE EXTRA 99D  
BROOKMORE MAIDEN 47E

ACTUAL BW	ADJ. 205	ADJ. 365	EPDS					MAT.	DAM'S AGE
			BW	WW	YW	MILK			
80	752	1423	2.6 37%	50 30%	88 26%	20 22%	45	2	



LOT 20 - BROOKMORE TOTAL 16T

### 20

## BROOKMORE ANGUS BROOKMORE TOTAL 16T

MALE JVJ 16T 1376066 JANUARY 07 2007

SITZ ALLIANCE 6595  
**K C F BENNETT TOTAL 1083033**  
EXT OF CONANGA 6790

SITZ TRAVELER 8180  
SITZ BARBARAMERE JET 2698  
N BAR EMULATION EXT  
LADY ENCHANTRESS OF CONANGA

CARCASS	
MAR.	4.70
BF	11.92
REA	13.12
%LMY	57.22

BROOKMORE BANDO 5175 9N  
**BROOKMORE QUEEN 263R 1310476**  
BROOKMORE QUEEN 42L

S A F 598 BANDO 5175  
BROOKMORE HEROINE 126H  
O G L BATTLE CRY 427 128  
KDR QUEEN 1505

ACTUAL BW	ADJ. 205	ADJ. 365	EPDS					MAT.	DAM'S AGE
			BW	WW	YW	MILK			
76	769	1290	1.1 32%	44 24%	83 23%	24 22%	46	2	

### 21

## BROOKMORE ANGUS BROOKMORE TOTAL 27T

MALE JVJ 27T 1376037 JANUARY 09 2007

SITZ ALLIANCE 6595  
**K C F BENNETT TOTAL 1083033**  
EXT OF CONANGA 6790

SITZ TRAVELER 8180  
SITZ BARBARAMERE JET 2698  
N BAR EMULATION EXT  
LADY ENCHANTRESS OF CONANGA

CARCASS	
MAR.	4.45
BF	12.86
REA	13.12
%LMY	56.27

S A F 598 BANDO 5175  
**BROOKMORE TIBBIE 103R 1293210**  
BROOKMORE TIBBIE 196H

BON VIEW BANDO 598  
S A F ROYAL LASS 1002  
EBON HILL EXTRA GOLD 31'95  
BROOKMORE TIBBIE 93F

ACTUAL BW	ADJ. 205	ADJ. 365	EPDS					MAT.	DAM'S AGE
			BW	WW	YW	MILK			
76	693	1326	2.2 37%	44 30%	86 26%	21 22%	43	2	

### 22

## BROOKMORE ANGUS BROOKMORE TOTAL 113T

MALE JVJ 113T 1376051 JANUARY 27 2007

SITZ ALLIANCE 6595  
**K C F BENNETT TOTAL 1083033**  
EXT OF CONANGA 6790

SITZ TRAVELER 8180  
SITZ BARBARAMERE JET 2698  
N BAR EMULATION EXT  
LADY ENCHANTRESS OF CONANGA

CARCASS	
MAR.	5.00
BF	12.86
REA	12.59
%LMY	55.84

S A F 598 BANDO 5175  
**BROOKMORE TIBBIE 172R 1293199**  
MVF TIBBIE 38H

BON VIEW BANDO 598  
S A F ROYAL LASS 1002  
BROOKMORE LANCER 32F  
MVF TIBBIE 35A

ACTUAL BW	ADJ. 205	ADJ. 365	EPDS					MAT.	DAM'S AGE
			BW	WW	YW	MILK			
90	764	1393	3.7 37%	48 30%	85 26%	21 22%	45	2	

# CATTLEMAN'S CONNECTION ANGUS BULL SALE 2008

## 23

BROOKMORE ANGUS  
**BROOKMORE TOTAL 119T**

MALE JVJ 119T 1411628 JANUARY 29 2007

SITZ ALLIANCE 6595  
**K C F BENNETT TOTAL 1083033**  
 EXT OF CONANGA 6790

SITZ TRAVELER 8180  
 SITZ BARBARAMERE JET 2698  
 N BAR EMULATION EXT  
 LADY ENCHANTRESS OF CONANGA

CARCASS	
MAR.	4.70
BF	11.49
REA	12.81
%LMY	57.42


BUSHES GRAND DESIGN  
**BROOKMORE ALETA 12R 1411627**  
 BROOKMORE ALETA 60N

BON VIEW NEW DESIGN 1407  
 BUSHES LADY DIVIDEND 872  
 S A NEUTRON 377  
 BROOKMORE ALETA 30F

ACTUAL BW	ADJ. 205	ADJ. 365	EPDS					DAM'S AGE
			BW	WW	YW	MILK	MAT.	
90	784	1490	2.9 37%	51 30%	92 26%	23 22%	49	2



LOT 23 - BROOKMORE TOTAL 119T



### Expected Progeny Differences (EPDs)

Statistics generated for individual cattle through national genetic evaluations

**EPDs:**

- allow breeders to estimate a young animal's breeding value—that animal's value as a parent
- allow a fair comparison of breeding value by removing environmental bias such as climate, feed and special management
- the best tool available to compare animals between herds, countries and year of birth
- help breeders make informed decisions regarding breeding stock selection by evaluating numerous traits such as growth-related traits (BW, WW, YW, Milk), carcass (REA, FAT, %IMF, etc.) and reproductive efficiency (CE, MCE, SC)
- estimate the group performance of one parent compared to the group performance of another parent, assuming similar mates

**EPDs EVALUATE GROUP AVERAGES AND OFFSPRING'S PERFORMANCE. THEY CANNOT PREDICT INDIVIDUAL PERFORMANCE OR WEIGHTS**

To evaluate seed stock, use EPDs, pedigree and visual assessment. With EPDs, the concept of "intermediate optimums" works best. Selection for one trait or for extremes generally results in unexpected consequences due to genetic correlations—for example, intense selection for high yearling weight will also increase birth weight. Successful cattle breeding requires a thoughtful and balanced approach to optimize fertility, growth and carcass merit while improving profitability and efficiency.



**SITZ ALLIANCE 6595**

**BW: +2.9 WW: +51 YW: +95 Milk: +31 TM: +57 YG: +44**

- Alliance 6595 is one of the single greatest "all around" balanced trait sires of his era

6 SONS SELL

## 24

BROOKMORE ANGUS  
**BROOKMORE ALLIANCE 55T**

MALE JVJ 55T 1375943 JANUARY 19 2007

SITZ TRAVELER 8180  
**SITZ ALLIANCE 6595 1036949**  
 SITZ BARBARAMERE JET 2698

G D A R TRAVELER 71  
 SITZ EVERELDA ENTENSE 1137  
 3 BAR SPIKE 1766  
 SITZ BARAMERE JET 155

CARCASS	
MAR.	4.70
BF	12.44
REA	12.89
%LMY	56.51

MVF STOCKMAN 45H  
**BROOKMORE DAISY 24N 1293160**  
 BROOKMORE DAISY 117E

TC STOCKMAN 365  
 DODSWOOD ENCHANTRESS MAX-4  
 G D A R OSCAR 711  
 MVB DAISY 4A

ACTUAL BW	ADJ. 205	ADJ. 365	EPDS					DAM'S AGE
			BW	WW	YW	MILK	MAT.	
80	652	1395	2.6 34%	44 26%	82 24%	20 27%	42	4

# CATTLEMAN'S CONNECTION ANGUS BULL SALE 2008



LOT 25 - BROOKMORE ALLIANCE 78T



LOT 28 - BROOKMORE ALLIANCE 248T

25

BROOKMORE ANGUS  
**BROOKMORE ALLIANCE 78T**

MALE JVJ 78T 1375846 JANUARY 22 2007

SITZ TRAVELER 8180  
**SITZ ALLIANCE 6595 1036949**  
SITZ BARBARAMERE JET 2698

BROOKMORE TOUCHSTONE 2F  
**BROOKMORE BELLA 218L 1067815**  
BROOKMORE BELLA 89B

G D A R TRAVELER 71  
SITZ EVERELDA ENTENSE 1137  
3 BAR SPIKE 1766  
SITZ BARAMERE JET 155  
CENTURY TOUCHSTONE 131  
BROOKMORE HEROINE 56C  
MVF SURE SHOT 49Y  
BROOKMORE BELLA 16W

CARCASS	
MAR.	5.20
BF	8.10
REA	12.59
%LMY	60.71

ACTUAL BW	ADJ. 205	ADJ. 365	EPDS					MAT.	DAM'S AGE			
			BW	WW	YW	MILK						
84	624	1318	2.5	38%	34	32%	62	30%	21	27%	38	6

26

BROOKMORE ANGUS  
**BROOKMORE ALLIANCE 215T**

MALE JVJ 215T 1375977 FEBRUARY 15 2007

SITZ TRAVELER 8180  
**SITZ ALLIANCE 6595 1036949**  
SITZ BARBARAMERE JET 2698

MVF STOCKMAN 45H  
**BROOKMORE KARAMA 58P 1211897**  
BROOKMORE KARAMA 130E

G D A R TRAVELER 71  
SITZ EVERELDA ENTENSE 1137  
3 BAR SPIKE 1766  
SITZ BARAMERE JET 155  
TC STOCKMAN 365  
DODSWOOD ENCHANTRESS MAX-90  
EARLY SUNSET EXTRA 30Z  
BROOKMORE KARAMA 70T

CARCASS	
MAR.	4.70
BF	12.87
REA	12.01
%LMY	55.35

ACTUAL BW	ADJ. 205	ADJ. 365	EPDS					MAT.	DAM'S AGE			
			BW	WW	YW	MILK						
76	754	1424	1.9	34%	48	26%	86	24%	23	27%	47	3



LOT 26 - BROOKMORE ALLIANCE 215T

27

BROOKMORE ANGUS  
**BROOKMORE ALLIANCE 227T**

MALE JVJ 227T 1375947 FEBRUARY 19 2007

SITZ TRAVELER 8180  
**SITZ ALLIANCE 6595 1036949**  
SITZ BARBARAMERE JET 2698

YOUNKIN TRIUMPH 4966  
**BROOKMORE ALETA 64N 1186900**  
BROOKMORE ALETA 145K

G D A R TRAVELER 71  
SITZ EVERELDA ENTENSE 1137  
3 BAR SPIKE 1766  
SITZ BARAMERE JET 155  
BRUSETT SPECTRUM 62  
YOUNKIN ROSE 4952  
WINDOVER MATADOR 13H  
BROOKMORE ALETA 63H

CARCASS	
MAR.	4.05
BF	13.33
REA	12.50
%LMY	55.27

ACTUAL BW	ADJ. 205	ADJ. 365	EPDS					MAT.	DAM'S AGE			
			BW	WW	YW	MILK						
98	739	1433	5.2	37%	51	30%	91	28%	22	25%	48	4

28

BROOKMORE ANGUS  
**BROOKMORE ALLIANCE 248T**

MALE JVJ 248T 1375958 FEBRUARY 25 2007

SITZ TRAVELER 8180  
**SITZ ALLIANCE 6595 1036949**  
SITZ BARBARAMERE JET 2698

MVF STOCKMAN 45H  
**BROOKMORE MAIDEN 218N 1186877**  
BROOKMORE MAIDEN 155J

G D A R TRAVELER 71  
SITZ EVERELDA ENTENSE 1137  
3 BAR SPIKE 1766  
SITZ BARAMERE JET 155  
TC STOCKMAN 365  
DODSWOOD ENCHANTRESS MAX-90  
BROOKMORE EXTRA 99D  
BROOKMORE MAIDEN 47E

CARCASS	
MAR.	4.55
BF	8.57
REA	13.87
%LMY	61.26

ACTUAL BW	ADJ. 205	ADJ. 365	EPDS					MAT.	DAM'S AGE			
			BW	WW	YW	MILK						
90	725	1510	4.4	38%	50	30%	87	28%	22	25%	47	4

29

BROOKMORE ANGUS  
**BROOKMORE ALLIANCE 259T**

MALE JVJ 259T 1375986 MARCH 01 2007

SITZ TRAVELER 8180  
**SITZ ALLIANCE 6595 1036949**  
SITZ BARBARAMERE JET 2698

VERMILION DATELINE 7078  
**BROOKMORE ROSE 119P 1211892**  
BROOKMORE ROSE 94E

G D A R TRAVELER 71  
SITZ EVERELDA ENTENSE 1137  
3 BAR SPIKE 1766  
SITZ BARAMERE JET 155  
CONNELLY DATELINE  
VERMILION BLACKBIRD 5044  
MVHF STARDOM 12A  
BROOKMORE ROSE 103W

CARCASS	
MAR.	5.65
BF	12.38
REA	13.50
%LMY	57.07

ACTUAL BW	ADJ. 205	ADJ. 365	EPDS					MAT.	DAM'S AGE			
			BW	WW	YW	MILK						
80	692	1367	3.2	38%	51	30%	90	28%	22	25%	48	3

# CATTLEMAN'S CONNECTION ANGUS BULL SALE 2008



## S A V NET WORTH 4200

**BW: +3.9 WW: +62 YW: +111 Milk: +28 TM: +59 YG: +49**

- Net Worth is a performance power house. He recorded an individual 205 day weight of 995 lbs., a 365 day weight of 1573 lbs. with an 17.2 REA at scan time

9 SONS SELL



LOT 32 - MVF NET WORTH 39T

# 30

MOUNTAIN VIEW FARMS LTD.  
MVF NET WORTH 5T

MALE ABA 5T 1419820 JANUARY 29 2007

S A V 8180 TRAVELER 004  
S A V NET WORTH 4200 1309743  
S A V MAY 2410

SITZ TRAVELER 8180  
BOYD FOREVER LADY 8003  
S A F 598 BANDO 5175  
S A V MAY 6269

CARCASS	
MAR.	5.10
BF	5.27
REA	11.71
%LMY	62.87

TC STOCKMAN 365  
BROOKMORE MISS EVA 75J 976527  
BROOKMORE EVA 37D

TC STOCKMAN  
TC PRIDE 0014  
BROOKMORE MAGIC 31B  
BROOKMORE EVA 24A

ACTUAL BW	ADJ. 205	ADJ. 365	EPDS				DAM'S AGE
			BW	WW	YW	MILK	
84	683	1195	I+3.4 5%	I+42 5%	I+76 5%	I+23 5%	I+44 8

- A maternal brother sold at the 2007 Cattleman's Connection Bull Sale to Peter Campbell, Alvinston, ON for \$4,100. Another maternal brother sold at the 2005 Cattleman's Connection Bull Sale for \$3,300 to Toms Grain & Cattle Company, Redvers, SK
- Tremendous hair and thickness, very well balanced EPDs from a cow that knows how to raise herd bulls

# 31

MOUNTAIN VIEW FARMS LTD.  
MVF NET WORTH 16T

MALE ABA 16T 1419805 FEBRUARY 04 2007

S A V 8180 TRAVELER 004  
S A V NET WORTH 4200 1309743  
S A V MAY 2410

SITZ TRAVELER 8180  
BOYD FOREVER LADY 8003  
S A F 598 BANDO 5175  
S A V MAY 6269

CARCASS	
MAR.	4.45
BF	6.19
REA	11.85
%LMY	62.05

MVRB VISION 86E  
MVF ELENA 34H 926204  
DOUBLE AA ELENA 43'94

G D A R EXECUTIVE 727  
MVF TIBBIE 48W  
PEAK DOT BARDOLENE 43B  
DOUBLE AA ELENA 617'92

ACTUAL BW	ADJ. 205	ADJ. 365	EPDS				DAM'S AGE
			BW	WW	YW	MILK	
103	658	1163	I+3.1 5%	I+39 5%	I+71 5%	I+17 5%	I+37 9

- A maternal brother sold at the 2007 Cattleman's Connection Bull Sale to Randy Bartel, Roblin, MB for \$3,000

# 32

MOUNTAIN VIEW FARMS LTD.  
MVF NET WORTH 39T

MALE ABA 39T 1419955 FEBRUARY 11 2007

S A V 8180 TRAVELER 004  
S A V NET WORTH 4200 1309743  
S A V MAY 2410

SITZ TRAVELER 8180  
BOYD FOREVER LADY 8003  
S A F 598 BANDO 5175  
S A V MAY 6269

CARCASS	
MAR.	5.10
BF	6.67
REA	12.96
%LMY	62.47

NICHOLS EXTRA H6  
MVF GEORGINA 85P 1222437  
MVF GEORGINA 14M

N BAR EMULATION EXT  
NICHOLS EILEEN MAY F261  
BON VIEW NEW DESIGN 878  
MVF GEORGINA 10K

ACTUAL BW	ADJ. 205	ADJ. 365	EPDS				DAM'S AGE
			BW	WW	YW	MILK	
88	755	1239	I+2.3 5%	I+50 5%	I+94 5%	I+26 5%	I+51 3

- Textbook EPDs
- Very thick made, low birth weight Net Worth son
- A pedigree stacked with many great breeding bulls
- This Georgina cow family have been very prolific producers at MVF
- If you are looking for a bull to breed heifers with that extra performance look no further - this is a very interesting calf

# 33

MOUNTAIN VIEW FARMS LTD.  
MVF NET WORTH 51T

MALE ABA 51T 1421545 FEBRUARY 15 2007

S A V 8180 TRAVELER 004  
S A V NET WORTH 4200 1309743  
S A V MAY 2410

SITZ TRAVELER 8180  
BOYD FOREVER LADY 8003  
S A F 598 BANDO 5175  
S A V MAY 6269

CARCASS	
MAR.	4.50
BF	6.19
REA	13.36
%LMY	63.28

F A R KRUGERRAND 410H  
MVF TIBBIE 74P 1222288  
MVF TIBBIE 179G

KRUGERRAND OF DONAMERE 490  
F A R ERIANNA 286F  
RITO 9FB3 OF 5H11 FULLBACK  
MVF TIBBIE 14C

ACTUAL BW	ADJ. 205	ADJ. 365	EPDS				DAM'S AGE
			BW	WW	YW	MILK	
84	819	1360	I+3.9 5%	I+55 5%	I+102 5%	I+24 5%	I+51 3

- Co-owned with Sterling Angus, Williams Lake BC
- Check out this bulls EPDs
- One of the heaviest muscled bulls ever produced at MVF

# CATTLEMAN'S CONNECTION ANGUS BULL SALE 2008



LOT 34 - MVF NETWORK 59T

## 34

MOUNTAIN VIEW FARMS LTD.  
MVF NETWORK 59T

MALE

ABA 59T 1414351 FEBRUARY 17 2007

S A V 8180 TRAVELER 004  
**S A V NET WORTH 4200 1309743**  
S A V MAY 2410

SITZ TRAVELER 8180  
BOYD FOREVER LADY 8003  
S A F 598 BANDO 5175  
S A V MAY 6269

CARCASS	
MAR.	6.00
BF	10.97
REA	14.57
%LMY	59.38

GDAR SVF TRAVELER 234D  
**MVF ROSEBUD 100M 1101770**  
LENLOOK ROSEBUD 30G

TRAVELER 124 G D A R  
G D A R FOREVER LADY 718  
WHITSTONE FLY TRAVELER 3006  
LENLOOK ROSEBUD 6A

ACTUAL BW	ADJ. 205	ADJ. 365	EPDS				MILK	MAT.	DAM'S AGE
			BW	WW	YW	MAT.			
85	779	1340	I+3.0 5%	I+51 5%	I+91 5%	I+24 5%	I+49	5	

- Very correct, thick made from a tremendous cow family
- Both dam and grandam have served as embryo donors at MVF
- Note this bulls PDs and carcass numbers
- A maternal sister sold to Barry Enright, Ontario for \$4,200
- Serious beef producers take a good look here



LOT 35 - MVF NETWORK 97T

## 35

MOUNTAIN VIEW FARMS LTD.  
MVF NETWORK 97T

MALE

ABA 97T 1414352 FEBRUARY 28 2007

S A V 8180 TRAVELER 004  
**S A V NET WORTH 4200 1309743**  
S A V MAY 2410

SITZ TRAVELER 8180  
BOYD FOREVER LADY 8003  
S A F 598 BANDO 5175  
S A V MAY 6269

CARCASS	
MAR.	5.45
BF	10.95
REA	13.98
%LMY	58.92

V D A R NEW TREND 315  
**LENLOOK HEROINE 21K 1009018**  
LENLOOK HEROINE 28H

A A R NEW TREND  
V D A R LUCY 704  
BOTANY ANGUS TRIPLE THREAT 44C  
LENLOOK HEROINE 32D

ACTUAL BW	ADJ. 205	ADJ. 365	EPDS				MILK	MAT.	DAM'S AGE
			BW	WW	YW	MAT.			
92	805	1353	I+3.5 5%	I+49 5%	I+89 5%	I+21 5%	I+45	7	

- Well balanced EPDs
- Very thick, very correct, very good



LOT 36 - MVF NET WORTH 113T

## 36

MOUNTAIN VIEW FARMS LTD.  
MVF NET WORTH 113T

MALE

ABA 113T 1419909 MARCH 03 2007

S A V 8180 TRAVELER 004  
**S A V NET WORTH 4200 1309743**  
S A V MAY 2410

SITZ TRAVELER 8180  
BOYD FOREVER LADY 8003  
S A F 598 BANDO 5175  
S A V MAY 6269

CARCASS	
MAR.	5.40
BF	5.71
REA	11.24
%LMY	62.04

GDAR SVF TRAVELER 234D  
**MVF ROSEBUD 906N 1185701**  
LENLOOK ROSEBUD 30G

TRAVELER 124 G D A R  
G D A R FOREVER LADY 718  
WHITSTONE FLY TRAVELER 3006  
LENLOOK ROSEBUD 6A

ACTUAL BW	ADJ. 205	ADJ. 365	EPDS				MILK	MAT.	DAM'S AGE
			BW	WW	YW	MAT.			
93	756	1198	I+3.8 5%	I+49 5%	I+88 5%	I+21 5%	I+46	4	

- Selling 1/2 interest
- Full brother in blood to Lot 4
- Tremendous hair and back leg, thick topped and quartered

# CATTLEMAN'S CONNECTION ANGUS BULL SALE 2008



LOT 37 - MVF NET WORTH 134T

## 37

MOUNTAIN VIEW FARMS LTD.  
MVF NET WORTH 134T

MALE ABA 134T 1419975 MARCH 08 2007

S A V 8180 TRAVELER 004  
S A V NET WORTH 4200 1309743  
S A V MAY 2410

SITZ TRAVELER 8180  
BOYD FOREVER LADY 8003  
S A F 598 BANDO 5175  
S A V MAY 6269  
KRUGERRAND OF DONAMERE 490  
F A R ERIANNA 286F  
O G L BATTLE CRY 427 128  
MVF TIBBIE 52F

CARCASS	
MAR.	4.75
BF	7.62
REA	11.75
%LMY	60.51

F A R KRUGERRAND 410H  
MVF TIBBIE 110P 1222369  
MVF TIBBIE 8L

ACTUAL BW	ADJ. 205	ADJ. 365	EPDS					DAM'S AGE
			BW	WW	YW	MILK	MAT.	
88	766	1313	I+3.5 5%	I+52 5%	I+100 5%	I+23 5%	I+49	3

- Check out this bulls EPDS
- Grandam MVF Tibbie 8L was the dam of the top selling bull at the 2006 Cattleman's Connection Bull sale to Remington Land and Cattle Company for \$20,000

## 38

MOUNTAIN VIEW FARMS LTD.  
MVF NET WORTH 603T

MALE ABA 603T 1421006 ET FEBRUARY 02 2007

S A V 8180 TRAVELER 004  
S A V NET WORTH 4200 1309743  
S A V MAY 2410

SITZ TRAVELER 8180  
BOYD FOREVER LADY 8003  
S A F 598 BANDO 5175  
S A V MAY 6269  
B/R NEW DESIGN 036  
WHITE FENCE PRIDE H1  
TC STOCKMAN 365  
CAN AM FAVORITE 12G

CARCASS	
MAR.	3.80
BF	3.81
REA	12.09
%LMY	64.68

B/R NEW FRONTIER 095  
MVF FAVORITE 906P 1232676  
MVF FAVORITE 58L

ACTUAL BW	ADJ. 205	ADJ. 365	EPDS					DAM'S AGE
			BW	WW	YW	MILK	MAT.	
90	590	1111	I+3.8 5%	I+52 5%	I+93 5%	I+23 5%	I+49	3

- A maternal brother sold at the 2007 Cattleman's Connection Bull Sale for \$2,600 to the Huxley Colony
- Dam was a Class Winner at the 2005 CWA and sold at the Masterpiece Sale to Sterling Angus, Williams Lake, BC for \$8,000



## S A V 004 DENSITY 4336

BW: +4.5 WW: +53 YW: +96 Milk: +26 TM: +53 YG: +44

- Density combines flawless phenotype with outstanding performance

24 SONS SELL

## 39

BROOKMORE ANGUS  
BROOKMORE DENSITY 38T

MALE JVJ 38T 1375821 TWIN JANUARY 13 2007

S A V 8180 TRAVELER 004  
S A V 004 DENSITY 4336 1266311  
S A V MAY 7238

SITZ TRAVELER 8180  
BOYD FOREVER LADY 8003  
LEACHMAN RIGHT TIME  
S A R PROSPECTOR MAY 9124

CARCASS	
MAR.	4.55
BF	12.86
REA	13.08
%LMY	56.24

MVF FULLBACK 100J  
BABA DAISY 50L 1067524  
BROOKMORE DAISY 117E

RITO 9FB3 OF 5H11 FULLBACK  
MVHF TIBBIE 39B  
G D A R OSCAR 711  
MVB F DAISY 4A

ACTUAL BW	ADJ. 205	ADJ. 365	EPDS					DAM'S AGE
			BW	WW	YW	MILK	MAT.	
80	730	1444	I+4.0 5%	I+44 5%	I+80 5%	I+19 5%	I+41	6

## 40

BROOKMORE ANGUS  
BROOKMORE DENSITY 77T

MALE JVJ 77T 1375976 JANUARY 22 2007

S A V 8180 TRAVELER 004  
S A V 004 DENSITY 4336 1266311  
S A V MAY 7238

SITZ TRAVELER 8180  
BOYD FOREVER LADY 8003  
LEACHMAN RIGHT TIME  
S A R PROSPECTOR MAY 9124

CARCASS	
MAR.	4.35
BF	8.59
REA	13.20
%LMY	60.69

MVF STOCKMAN 45H  
BROOKMORE ALETA 54P 1212050  
BROOKMORE ALETA 122H

TC STOCKMAN 365  
DODSWOOD ENCHANTRESS MAX-90  
EBON HILL EXTRA GOLD 31'95  
BROOKMORE ALETA 36E

ACTUAL BW	ADJ. 205	ADJ. 365	EPDS					DAM'S AGE
			BW	WW	YW	MILK	MAT.	
88	643	1295	4.9 38%	44 30%	85 22%	19 9%	41	3

## 41

BROOKMORE ANGUS  
BROOKMORE DENSITY 83T

MALE JVJ 83T 1375999 JANUARY 20 2007

S A V 8180 TRAVELER 004  
S A V 004 DENSITY 4336 1266311  
S A V MAY 7238

SITZ TRAVELER 8180  
BOYD FOREVER LADY 8003  
LEACHMAN RIGHT TIME  
S A R PROSPECTOR MAY 9124

CARCASS	
MAR.	5.05
BF	9.54
REA	13.65
%LMY	60.09

BUSHS GRAND DESIGN  
BROOKMORE LADY JANE 195P 1212325  
BROOKMORE LADY JANE 190M

BON VIEW NEW DESIGN 1407  
BUSHS LADY DIVIDEND 872  
MVF PERFECT BLEND 32H  
BROOKMORE LADY JANE 100J

ACTUAL BW	ADJ. 205	ADJ. 365	EPDS					DAM'S AGE
			BW	WW	YW	MILK	MAT.	
88	648	1333	4.2 34%	44 26%	80 18%	22 11%	44	3

GOOD WORKING BULLS  
for hard working  
Canadian Cattlemen

# CATTLEMAN'S CONNECTION ANGUS BULL SALE 2008

## 42

### BROOKMORE ANGUS BROOKMORE DENSITY 91T

MALE JVJ 91T 1375787 JANUARY 23 2007

S A V 8180 TRAVELER 004  
S A V 004 DENSITY 4336 1266311  
S A V MAY 7238

SITZ TRAVELER 8180  
BOYD FOREVER LADY 8003  
LEACHMAN RIGHT TIME  
S A R PROSPECTOR MAY 9124

CARCASS	
MAR.	4.10
BF	10.02
REA	14.87
%LMY	60.60

S A F FAME  
WKJ TIBBIE 4K 1023772  
KENOSEE PARK TIBBIE 22C

MINERTS FORTUNE 2000  
S A F ROYAL LASS 1027  
P S POWER PLAY  
MVF TIBBIE 80A

ACTUAL BW	ADJ. 205	ADJ. 365	EPDS					MAT.	DAM'S AGE
			BW	WW	YW	MILK			
88	649	1382	4.2 37%	47 30%	79 22%	14 9%	38	7	



LOT 46 - BROOKMORE DENSITY 111T

## 43

### BROOKMORE ANGUS BROOKMORE DENSITY 95T

MALE JVJ 95T 1376010 JANUARY 24 2007

S A V 8180 TRAVELER 004  
S A V 004 DENSITY 4336 1266311  
S A V MAY 7238

SITZ TRAVELER 8180  
BOYD FOREVER LADY 8003  
LEACHMAN RIGHT TIME  
S A R PROSPECTOR MAY 9124

CARCASS	
MAR.	5.70
BF	10.00
REA	14.48
%LMY	60.30

MVF STOCKMAN 45H  
BROOKMORE ELLEN 260P 1212152  
NU WAVE MILLENIUM 2000 9K

TC STOCKMAN 365  
DODSWOOD ENCHANTRESS MAX-90  
MINERTS FORTUNE 2000  
BROOKMORE ELLEN 108C

ACTUAL BW	ADJ. 205	ADJ. 365	EPDS					MAT.	DAM'S AGE
			BW	WW	YW	MILK			
90	760	1392	4.9 38%	51 30%	86 22%	18 9%	44	3	

## 46

### BROOKMORE ANGUS BROOKMORE DENSITY 111T

MALE JVJ 111T 1375959 JANUARY 27 2007

S A V 8180 TRAVELER 004  
S A V 004 DENSITY 4336 1266311  
S A V MAY 7238

SITZ TRAVELER 8180  
BOYD FOREVER LADY 8003  
LEACHMAN RIGHT TIME  
S A R PROSPECTOR MAY 9124

CARCASS	
MAR.	5.75
BF	13.35
REA	15.24
%LMY	57.49

BENCHMARK STRETCH 062  
BROOKMORE LADY JANE 224N 1186933  
BROOKMORE LADY JANE 137L

EBON HILL FORTUNE 120'97  
BENCHMARK BLACKBIRD 52'95  
ALBERDA TRAVELER 416  
BROOKMORE LADY JANE 56A

ACTUAL BW	ADJ. 205	ADJ. 365	EPDS					MAT.	DAM'S AGE
			BW	WW	YW	MILK			
84	782	1539	2.6 38%	52 30%	89 22%	21 9%	47	4	

## 44

### BROOKMORE ANGUS BROOKMORE DENSITY 99T

MALE JVJ 99T 1375864 JANUARY 25 2007

S A V 8180 TRAVELER 004  
S A V 004 DENSITY 4336 1266311  
S A V MAY 7238

SITZ TRAVELER 8180  
BOYD FOREVER LADY 8003  
LEACHMAN RIGHT TIME  
S A R PROSPECTOR MAY 9124

CARCASS	
MAR.	4.75
BF	11.43
REA	13.15
%LMY	57.76

BROOKMORE LANCER 32F  
BROOKMORE MAIDEN 50M 1135429  
BROOKMORE MAIDEN 96U

MINBURN LANCER 22D  
BROOKMORE ELINE 78D  
MOUNTAIN VIEW CRACKER JACK 18R  
BROOKMORE MAIDEN 20R

ACTUAL BW	ADJ. 205	ADJ. 365	EPDS					MAT.	DAM'S AGE
			BW	WW	YW	MILK			
94	720	1425	3.9 38%	39 31%	71 24%	19 10%	39	5	

## 47

### BROOKMORE ANGUS BROOKMORE DENSITY 126T

MALE JVJ 126T 1375961 JANUARY 29 2007

S A V 8180 TRAVELER 004  
S A V 004 DENSITY 4336 1266311  
S A V MAY 7238

SITZ TRAVELER 8180  
BOYD FOREVER LADY 8003  
LEACHMAN RIGHT TIME  
S A R PROSPECTOR MAY 9124

CARCASS	
MAR.	4.30
BF	8.59
REA	13.79
%LMY	61.17

F A R KRUGERRAND 410H  
BROOKMORE BEAUTY 4P 1212245  
BROOKMORE BEAUTY 43M

KRUGERRAND OF DONAMERE 490  
F A R ERIANNA 286F  
BENCHMARK MAGIC MAN 007  
CHICO BEAUTY 16G

ACTUAL BW	ADJ. 205	ADJ. 365	EPDS					MAT.	DAM'S AGE
			BW	WW	YW	MILK			
72	650	1381	1.5 34%	44 26%	86 18%	20 11%	42	3	

## 45

### BROOKMORE ANGUS BROOKMORE DENSITY 109T

MALE JVJ 109T 1375960 JANUARY 27 2007

S A V 8180 TRAVELER 004  
S A V 004 DENSITY 4336 1266311  
S A V MAY 7238

SITZ TRAVELER 8180  
BOYD FOREVER LADY 8003  
LEACHMAN RIGHT TIME  
S A R PROSPECTOR MAY 9124

CARCASS	
MAR.	5.20
BF	9.07
REA	11.99
%LMY	59.22

BUSHES GRAND DESIGN  
BROOKMORE ALETA 3P 1212238  
BROOKMORE ALETA 22M

BON VIEW NEW DESIGN 1407  
BUSHES LADY DIVIDEND 872  
YOUNKIN TRIUMPH 4966  
BROOKMORE ALETA 120E

ACTUAL BW	ADJ. 205	ADJ. 365	EPDS					MAT.	DAM'S AGE
			BW	WW	YW	MILK			
82	601	1230	2.8 34%	40 26%	76 18%	20 11%	40	3	



LOT 44 - BROOKMORE DENSITY 99T

# CATTLEMAN'S CONNECTION ANGUS BULL SALE 2008



LOT 49 - BROOKMORE DENSITY 139T



LOT 51 - BROOKMORE DENSITY 155T

48

BROOKMORE ANGUS  
**BROOKMORE DENSITY 138T**

MALE JVJ 138T 1375862 JANUARY 31 2007

S A V 8180 TRAVELER 004  
**S A V 004 DENSITY 4336 1266311**  
S A V MAY 7238

SITZ TRAVELER 8180  
BOYD FOREVER LADY 8003  
LEACHMAN RIGHT TIME  
S A R PROSPECTOR MAY 9124

CARCASS	
MAR.	5.55
BF	13.81
REA	14.21
%LMY	56.18

BENCHMARK MAGIC MAN 007  
**BROOKMORE BEAUTY 43M 1112527**  
CHICO BEAUTY 16G

EBON HILL MAGIC MAN 41'97  
STRATHISLA AUTUMN ROSE 803'98  
ASPELUND'S WILDCAT 27'95  
LLB BEAUTY LASS 75E

ACTUAL BW	ADJ. 205	ADJ. 365	EPDS					DAM'S AGE
			BW	WW	YW	MILK	MAT.	
88	658	1300	3.3 38%	39 30%	74 22%	18 9%	38	5

49

BROOKMORE ANGUS  
**BROOKMORE DENSITY 139T**

MALE JVJ 139T 1375850 FEBRUARY 01 2007

S A V 8180 TRAVELER 004  
**S A V 004 DENSITY 4336 1266311**  
S A V MAY 7238

SITZ TRAVELER 8180  
BOYD FOREVER LADY 8003  
LEACHMAN RIGHT TIME  
S A R PROSPECTOR MAY 9124

CARCASS	
MAR.	4.35
BF	8.10
REA	14.23
%LMY	62.04

BENCHMARK MAGIC MAN 007  
**MADSEN'S ALETA 7M 1094477**  
BROOKMORE ALETA 83K

EBON HILL MAGIC MAN 41'97  
STRATHISLA AUTUMN ROSE 803'98  
DAVIS MILLENNIUM 7518  
BROOKMORE ALETA 47F

ACTUAL BW	ADJ. 205	ADJ. 365	EPDS					DAM'S AGE
			BW	WW	YW	MILK	MAT.	
100	720	1433	6 38%	49 31%	87 22%	18 10%	43	5

50

BROOKMORE ANGUS  
**BROOKMORE DENSITY 144T**

MALE JVJ 144T 1375992 FEBRUARY 03 2007

S A V 8180 TRAVELER 004  
**S A V 004 DENSITY 4336 1266311**  
S A V MAY 7238

SITZ TRAVELER 8180  
BOYD FOREVER LADY 8003  
LEACHMAN RIGHT TIME  
S A R PROSPECTOR MAY 9124

CARCASS	
MAR.	4.80
BF	7.17
REA	13.79
%LMY	62.63

BUSHES GRAND DESIGN  
**BROOKMORE ENCHANTRESS 151P 1212234**  
BROOKMORE ENCHANTRESS 12M

BON VIEW NEW DESIGN 1407  
BUSHES LADY DIVIDEND 872  
BENCHMARK MAGIC MAN 007  
BROOKMORE ENCHANTRESS 101K

ACTUAL BW	ADJ. 205	ADJ. 365	EPDS					DAM'S AGE
			BW	WW	YW	MILK	MAT.	
96	738	1391	4.7 38%	49 30%	84 22%	21 9%	46	3

51

BROOKMORE ANGUS  
**BROOKMORE DENSITY 155T**

MALE JVJ 155T 1375840 FEBRUARY 04 2007

S A V 8180 TRAVELER 004  
**S A V 004 DENSITY 4336 1266311**  
S A V MAY 7238

SITZ TRAVELER 8180  
BOYD FOREVER LADY 8003  
LEACHMAN RIGHT TIME  
S A R PROSPECTOR MAY 9124

CARCASS	
MAR.	4.80
BF	11.92
REA	14.12
%LMY	58.04

BROOKMORE EXTRA GOLD 155G  
**BROOKMORE LUCY 143L 1067977**  
KEMBAR LUCY 16F

EBON HILL EXTRA GOLD 31'95  
BROOKMORE DAISY 117E  
MVH LINEDRIVE 40Y  
KEMBAR LUCY 3Y

ACTUAL BW	ADJ. 205	ADJ. 365	EPDS					DAM'S AGE
			BW	WW	YW	MILK	MAT.	
90	735	1512	3.6 38%	45 31%	85 23%	18 10%	41	6

52

BROOKMORE ANGUS  
**BROOKMORE DENSITY 157T**

MALE JVJ 157T 1375979 FEBRUARY 05 2007

S A V 8180 TRAVELER 004  
**S A V 004 DENSITY 4336 1266311**  
S A V MAY 7238

SITZ TRAVELER 8180  
BOYD FOREVER LADY 8003  
LEACHMAN RIGHT TIME  
S A R PROSPECTOR MAY 9124

CARCASS	
MAR.	4.65
BF	11.90
REA	11.97
%LMY	56.30

S A F 598 BANDO 5175  
**BROOKMORE ELLEN 66P 1211884**  
BROOKMORE ELLEN 143D

BON VIEW BANDO 598  
S A F ROYAL LASS 1002  
MVHF STARDOM 12A  
BROOKMORE ELLEN 53U

ACTUAL BW	ADJ. 205	ADJ. 365	EPDS					DAM'S AGE
			BW	WW	YW	MILK	MAT.	
84	767	1458	4.2 38%	50 30%	91 22%	24 9%	49	3



LOT 50 - BROOKMORE DENSITY 144T

# CATTLEMAN'S CONNECTION ANGUS BULL SALE 2008



LOT 56 - BROOKMORE DENSITY 191T

## 55

BROOKMORE ANGUS  
BROOKMORE DENSITY 162T

MALE JVJ 162T 1376078 FEBRUARY 06 2007

S A V 8180 TRAVELER 004  
S A V 004 DENSITY 4336 1266311  
S A V MAY 7238

SITZ TRAVELER 8180  
BOYD FOREVER LADY 8003  
LEACHMAN RIGHT TIME  
S A R PROSPECTOR MAY 9124

CARCASS	
MAR.	4.95
BF	10.00
REA	12.92
%LMY	59.02

PF 7215 AVENGER 0232  
BROOKMORE ELINE 74M 1112586  
BROOKMORE ELINE 5H

WK APPEAL  
ALGOMA GOLDEN SUMMER T112  
EBON HILL EXTRA GOLD 31'95  
BROOKMORE ELINE 101W

ACTUAL BW	ADJ. 205	ADJ. 365	EPDS					DAM'S AGE
			BW	WW	YW	MILK	MAT.	
94	606	1302	5.6 38%	37 31%	71 23%	16 10%	35	5

## 53

BROOKMORE ANGUS  
BROOKMORE DENSITY 158T

MALE JVJ 158T 1375790 FEBRUARY 05 2007

S A V 8180 TRAVELER 004  
S A V 004 DENSITY 4336 1266311  
S A V MAY 7238

SITZ TRAVELER 8180  
BOYD FOREVER LADY 8003  
LEACHMAN RIGHT TIME  
S A R PROSPECTOR MAY 9124

CARCASS	
MAR.	4.00
BF	6.67
REA	13.96
%LMY	63.28

ALBERDA TRAVELER 416  
BROOKMORE RUBY 20K 1001696  
BROOKMORE RUBY 77H

D H D TRAVELER 6807  
ALBERDA QUEEN KIMBERLY 222  
EBON HILL EXTRA GOLD 31'95  
BROOKMORE RUBY 20E

ACTUAL BW	ADJ. 205	ADJ. 365	EPDS					DAM'S AGE
			BW	WW	YW	MILK	MAT.	
112	628	1334	7.6 38%	40 32%	81 25%	19 11%	39	7

## 56

BROOKMORE ANGUS  
BROOKMORE DENSITY 191T

MALE JVJ 191T 1375828 FEBRUARY 12 2007

S A V 8180 TRAVELER 004  
S A V 004 DENSITY 4336 1266311  
S A V MAY 7238

SITZ TRAVELER 8180  
BOYD FOREVER LADY 8003  
LEACHMAN RIGHT TIME  
S A R PROSPECTOR MAY 9124

CARCASS	
MAR.	4.0
BF	8.59
REA	12.12
%LMY	59.82

O G L BATTLE CRY 427 128  
BROOKMORE QUEEN 77L 1068066  
BROOKMORE QUEEN 91H

NICHOLS EUREKA W57  
O G L DUSTY ROSE 128 902  
EBON HILL EXTRA GOLD 31'95  
KDR QUEEN 1505

ACTUAL BW	ADJ. 205	ADJ. 365	EPDS					DAM'S AGE
			BW	WW	YW	MILK	MAT.	
100	776	1420	5.7 38%	47 32%	87 24%	23 11%	47	6

## 54

BROOKMORE ANGUS  
BROOKMORE DENSITY 160T

MALE JVJ 160T 1375984 FEBRUARY 06 2007

S A V 8180 TRAVELER 004  
S A V 004 DENSITY 4336 1266311  
S A V MAY 7238

SITZ TRAVELER 8180  
BOYD FOREVER LADY 8003  
LEACHMAN RIGHT TIME  
S A R PROSPECTOR MAY 9124

CARCASS	
MAR.	6.45
BF	11.43
REA	14.97
%LMY	59.23

BON VIEW NEW DESIGN 878  
BROOKMORE HEROINE 114P 1212331  
BROOKMORE HEROINE 228M

B/R NEW DESIGN 036  
BON VIEW GAMMER 85  
MVF PERFECT BLEND 32H  
BROOKMORE HEROINE 56C

ACTUAL BW	ADJ. 205	ADJ. 365	EPDS					DAM'S AGE
			BW	WW	YW	MILK	MAT.	
82	720	1434	2.5 38%	46 30%	80 22%	24 9%	47	3

## 57

BROOKMORE ANGUS  
BROOKMORE DENSITY 192T

MALE JVJ 192T 1375852 FEBRUARY 12 2007

S A V 8180 TRAVELER 004  
S A V 004 DENSITY 4336 1266311  
S A V MAY 7238

SITZ TRAVELER 8180  
BOYD FOREVER LADY 8003  
LEACHMAN RIGHT TIME  
S A R PROSPECTOR MAY 9124

CARCASS	
MAR.	4.20
BF	10.16
REA	12.60
%LMY	58.60

COLDSTREAM BONNIE DOON 29H  
MADSEN'S RUBY 17M 1094469  
BROOKMORE RUBY 47H

TC STOCKMAN 365  
COLDSTREAM BONNIE LASS 29Y  
EBON HILL EQUALIZER 49'96  
BROOKMORE RUBY 86B

ACTUAL BW	ADJ. 205	ADJ. 365	EPDS					DAM'S AGE
			BW	WW	YW	MILK	MAT.	
88	702	1334	2.7 38%	40 31%	68 24%	22 10%	42	5



LOT 57 - BROOKMORE DENSITY 192T

## 58

BROOKMORE ANGUS  
BROOKMORE DENSITY 195T

MALE JVJ 195T 1375784 TWIN FEBRUARY 12 2007

S A V 8180 TRAVELER 004  
S A V 004 DENSITY 4336 1266311  
S A V MAY 7238

SITZ TRAVELER 8180  
BOYD FOREVER LADY 8003  
LEACHMAN RIGHT TIME  
S A R PROSPECTOR MAY 9124

CARCASS	
MAR.	5.45
BF	6.67
REA	11.66
%LMY	61.41

GIBB ILLINI  
TRIPLE D LILLEY 109J 984091  
TRIPLE D ELLEN 109E

BON VIEW BANDO 598  
GIBB BARBARA LASS 6603  
V D A R NEW TREND 315  
TRIPLE D P I TULIP 24T

ACTUAL BW	ADJ. 205	ADJ. 365	EPDS					DAM'S AGE
			BW	WW	YW	MILK	MAT.	
80	773	1382	1+3.2 5%	1+39 5%	1+70 5%	1+27 5%	1+46	8

# CATTLEMAN'S CONNECTION ANGUS BULL SALE 2008



LOT 59 - BROOKMORE DENSITY 197T

## 62

BROOKMORE ANGUS  
BROOKMORE DENSITY 252T

MALE JVJ 252T 1375833 FEBRUARY 26 2007

S A V 8180 TRAVELER 004  
S A V 004 DENSITY 4336 1266311  
S A V MAY 7238

SITZ TRAVELER 8180  
BOYD FOREVER LADY 8003  
LEACHMAN RIGHT TIME  
S A R PROSPECTOR MAY 9124

CARCASS	
MAR.	4.60
BF	10.02
REA	13.52
%LMY	59.50

V D A R LUCYS BOY  
BROOKMORE KARAMA 101L 1068186  
BROOKMORE KARAMA 186J

TRAVELER 1148 G D A R  
V D A R PINE DRIVE LUCY 5  
EBON HILL EXTRA GOLD 31'95  
BROOKMORE KARAMA 130E

ACTUAL BW	ADJ. 205	ADJ. 365	EPDS					DAM'S AGE
			BW	WW	YW	MILK	MAT.	
86	673	1312	3.8 38%	40 31%	76 22%	19 10%	39	6

## 59

BROOKMORE ANGUS  
BROOKMORE DENSITY 197T

MALE JVJ 197T 1375832 FEBRUARY 12 2007

S A V 8180 TRAVELER 004  
S A V 004 DENSITY 4336 1266311  
S A V MAY 7238

SITZ TRAVELER 8180  
BOYD FOREVER LADY 8003  
LEACHMAN RIGHT TIME  
S A R PROSPECTOR MAY 9124

CARCASS	
MAR.	3.90
BF	8.10
REA	14.53
%LMY	62.29

MVF FULLBACK 100J  
BROOKMORE MEMORA 95L 1067958  
BROOKMORE MEMORA 120G

RITO 9FB3 OF 5H11 FULLBACK  
MVHF TIBBIE 39B  
BROOKMORE EXTRA 99D  
BROOKMORE MEMORA 19C

ACTUAL BW	ADJ. 205	ADJ. 365	EPDS					DAM'S AGE
			BW	WW	YW	MILK	MAT.	
100	751	1443	6.4 38%	50 32%	88 24%	21 11%	46	6



## 60

BROOKMORE ANGUS  
BROOKMORE DENSITY 209T

MALE JVJ 209T 1375804 FEBRUARY 13 2007

S A V 8180 TRAVELER 004  
S A V 004 DENSITY 4336 1266311  
S A V MAY 7238

SITZ TRAVELER 8180  
BOYD FOREVER LADY 8003  
LEACHMAN RIGHT TIME  
S A R PROSPECTOR MAY 9124

CARCASS	
MAR.	4.75
BF	8.57
REA	13.19
%LMY	60.70

EBON HILL EXTRA GOLD 31'95  
BROOKMORE LENLOCK 140K 1001466  
BROOKMORE LENLOCK 87C

DALRENE EXTRA 36A  
BLACK ANCHOR BLACKBIRD B 27U  
BROOKMORE STARFIRE 25A  
BROOKMORE LENLOCK 14X

ACTUAL BW	ADJ. 205	ADJ. 365	EPDS					DAM'S AGE
			BW	WW	YW	MILK	MAT.	
100	612	1273	6.7 39%	36 32%	68 25%	14 11%	32	7

## 61

BROOKMORE ANGUS  
BROOKMORE DENSITY 216T

MALE JVJ 216T 1375771 FEBRUARY 15 2007

S A V 8180 TRAVELER 004  
S A V 004 DENSITY 4336 1266311  
S A V MAY 7238

SITZ TRAVELER 8180  
BOYD FOREVER LADY 8003  
LEACHMAN RIGHT TIME  
S A R PROSPECTOR MAY 9124

CARCASS	
MAR.	4.45
BF	12.38
REA	13.59
%LMY	57.14

EBON HILL EXTRA GOLD 31'95  
BROOKMORE TIBBIE 196H 918914  
BROOKMORE TIBBIE 93F

DALRENE EXTRA 36A  
BLACK ANCHOR BLACKBIRD B 27U  
EARLY SUNSET EXTRA 30Z  
MVHF TIBBIE 5Z

ACTUAL BW	ADJ. 205	ADJ. 365	EPDS					DAM'S AGE
			BW	WW	YW	MILK	MAT.	
80	669	1368	2.9 39%	41 32%	78 25%	17 12%	38	9

## CONNEALY FREIGHTLINER

BW: +1.8 WW: +47 YW: +91 Milk: +20 TM: +44 YG: +44

- Freightliner is one of the greatest "Cow Makers" in the history of the Angus Breed. His daughters exhibit tremendous fertility, maternal ability and maintain body condition in any environment
- Sons are deep ribbed thick made and easy fleshing

12 SONS SELL

## 63

MOUNTAIN VIEW FARMS LTD.  
MVF FREIGHTLINER 6T

MALE

ABA 6T 1419982 JANUARY 31 2007

BON VIEW BANDO 598  
CONNEALY FREIGHTLINER 964749  
JOANA ERICA OF CONANGA

TEHAMA BANDO 155  
BON VIEW DORA 56  
NICHOLS HEAVY DUTY X100  
JARNE ERICA OF CONANGA

CARCASS	
MAR.	5.10
BF	4.76
REA	11.66
%LMY	63.36

NICHOLS EXTRA H6  
MVF TIBBIE 36R 1290694  
MVF TIBBIE 12M

N BAR EMULATION EXT  
NICHOLS EILEEN MAY F261  
GDAR SVF TRAVELER 234D  
MVF TIBBIE 2E

ACTUAL BW	ADJ. 205	ADJ. 365	EPDS					DAM'S AGE
			BW	WW	YW	MILK	MAT.	
70	628	1265	1+1.6 5%	1+47 5%	1+90 5%	1+21 5%	1+44	2

- Low BW recommended for heifers
- Huge spread from BW to YW EPDs

# CATTLEMAN'S CONNECTION ANGUS BULL SALE 2008



LOT 64 - FREIGHTLINER 13T



LOT 66 - BROOKMORE FREIGHTLINER 3T

**64**

MOUNTAIN VIEW FARMS LTD.  
**MFV FREIGHTLINER 13T**

MALE ABA 13T 1419991 FEBRUARY 03 2007

BON VIEW BANDO 598  
**CONNEALY FREIGHTLINER 964749**  
JOANA ERICA OF CONANGA

TEHAMA BANDO 155  
BON VIEW DORA 56  
NICHOLS HEAVY DUTY X100  
JARNE ERICA OF CONANGA

WESTERN WIDESPREAD 1L  
**MFV GEORGINA 157R 1290685**  
BxB MISS ALLIANCE 242L

WHITSTONE WIDESPREAD MB  
BDM BLUE LADY ERICA 126'95  
SITZ ALLIANCE 6595  
MFV GEORGINA 21J

CARCASS	
MAR.	5.10
BF	10.95
REA	13.27
%LMY	58.34

ACTUAL BW	ADJ. 205	ADJ. 365	EPDS					DAM'S AGE
			BW	WW	YW	MILK	MAT.	
92	810	1406	1+3.3 5%	1+46 5%	1+85 5%	1+19 5%	1+42	2

• This is a very strong calf from the Georgina Tribe

**66**

BROOKMORE ANGUS  
**BROOKMORE FREIGHTLINER 3T**

MALE JVJ 3T 1376033 JANUARY 04 2007

BON VIEW BANDO 598  
**CONNEALY FREIGHTLINER 964749**  
JOANA ERICA OF CONANGA

TEHAMA BANDO 155  
BON VIEW DORA 56  
NICHOLS HEAVY DUTY X100  
JARNE ERICA OF CONANGA

W C C SPECIAL DESIGN L309  
**BROOKMORE HEROINE 96R 1293352**  
BROOKMORE HEROINE 162M

BON VIEW NEW DESIGN 878  
N BAR PRIMROSE 2424  
BROOKMORE TOUCHSTONE 2F  
BROOKMORE HEROINE 142D

CARCASS	
MAR.	4.10
BF	6.69
REA	13.25
%LMY	62.67

ACTUAL BW	ADJ. 205	ADJ. 365	EPDS					DAM'S AGE
			BW	WW	YW	MILK	MAT.	
84	701	1368	2.8 37%	47 30%	88 28%	18 24%	42	2

**65**

BROOKMORE ANGUS  
**BROOKMORE FREIGHTLINER 1T**

MALE JVJ 1T 1376023 JANUARY 04 2007

BON VIEW BANDO 598  
**CONNEALY FREIGHTLINER 964749**  
JOANA ERICA OF CONANGA

TEHAMA BANDO 155  
BON VIEW DORA 56  
NICHOLS HEAVY DUTY X100  
JARNE ERICA OF CONANGA

S A NEUTRON 377  
**BROOKMORE MEMORA 53R 1293186**  
BROOKMORE MEMORA 120G

S A F NEUTRON  
S A QUEEN SUSAN 102  
BROOKMORE EXTRA 99D  
BROOKMORE MEMORA 19C

CARCASS	
MAR.	4.40
BF	8.18
REA	13.56
%LMY	61.40

ACTUAL BW	ADJ. 205	ADJ. 365	EPDS					DAM'S AGE
			BW	WW	YW	MILK	MAT.	
70	750	1392	1.8 37%	53 30%	95 28%	17 24%	44	2

**67**

BROOKMORE ANGUS  
**BROOKMORE FREIGHTLINER 15T**

MALE JVJ 15T 1376041 JANUARY 07 2007

BON VIEW BANDO 598  
**CONNEALY FREIGHTLINER 964749**  
JOANA ERICA OF CONANGA

TEHAMA BANDO 155  
BON VIEW DORA 56  
NICHOLS HEAVY DUTY X100  
JARNE ERICA OF CONANGA

W C C SPECIAL DESIGN L309  
**BROOKMORE KARAMA 110R 1293319**  
BROOKMORE KARAMA 40M

BON VIEW NEW DESIGN 878  
N BAR PRIMROSE 2424  
PF 7215 AVENGER 0232  
BROOKMORE KARAMA 119F

CARCASS	
MAR.	5.25
BF	14.34
REA	14.23
%LMY	55.66

ACTUAL BW	ADJ. 205	ADJ. 365	EPDS					DAM'S AGE
			BW	WW	YW	MILK	MAT.	
86	787	1475	4.1 37%	53 30%	94 28%	23 24%	50	2



LOT 65 - BROOKMORE FREIGHTLINER 1T

**68**

BROOKMORE ANGUS  
**BROOKMORE FREIGHTLINER 22T**

MALE JVJ 22T 1376029 JANUARY 08 2007

BON VIEW BANDO 598  
**CONNEALY FREIGHTLINER 964749**  
JOANA ERICA OF CONANGA

TEHAMA BANDO 155  
BON VIEW DORA 56  
NICHOLS HEAVY DUTY X100  
JARNE ERICA OF CONANGA

S A NEUTRON 377  
**BROOKMORE HEROINE 81R 1293182**  
BROOKMORE HEROINE 90G

S A F NEUTRON  
S A QUEEN SUSAN 102  
EARLY SUNSET EXTRA 56B  
BROOKMORE HEROINE 26C

CARCASS	
MAR.	5.00
BF	12.40
REA	15.07
%LMY	58.32

ACTUAL BW	ADJ. 205	ADJ. 365	EPDS					DAM'S AGE
			BW	WW	YW	MILK	MAT.	
78	704	1331	2.6 37%	49 30%	90 28%	17 24%	42	2

# CATTLEMAN'S CONNECTION ANGUS BULL SALE 2008



LOT 69 - BROOKMORE FREIGHTLINER 23T



LOT 70 - BROOKMORE FREIGHTLINER 33T

69

BROOKMORE ANGUS  
**BROOKMORE FREIGHTLINER 23T**

MALE JVJ 23T 1376042 JANUARY 08 2007

BON VIEW BANDO 598  
**CONNEALY FREIGHTLINER 964749**  
JOANA ERICA OF CONANGA

TEHAMA BANDO 155  
BON VIEW DORA 56  
NICHOLS HEAVY DUTY X100  
JARNE ERICA OF CONANGA

W C C SPECIAL DESIGN L309  
**BROOKMORE MISS EVA 113R 1293184**  
BROOKMORE MISS EVA 111G

BON VIEW NEW DESIGN 878  
N BAR PRIMROSE 2424  
EARLY SUNSET EXTRA 56B  
BROOKMORE MISS EVA 91D

CARCASS	
MAR.	5.15
BF	11.44
REA	14.38
%LMY	58.73

ACTUAL BW	ADJ. 205	ADJ. 365	EPDS				MAT.	DAM'S AGE
			BW	WW	YW	MILK		
76	736	1375	2.8 37%	50 30%	91 28%	22 24%	47	2

72

BROOKMORE ANGUS  
**BROOKMORE FREIGHTLINER 171T**

MALE JVJ 171T 1375829 FEBRUARY 08 2007

BON VIEW BANDO 598  
**CONNEALY FREIGHTLINER 964749**  
JOANA ERICA OF CONANGA

TEHAMA BANDO 155  
BON VIEW DORA 56  
NICHOLS HEAVY DUTY X100  
JARNE ERICA OF CONANGA

MVF PERFECT BLEND 32H  
**BROOKMORE LADY JANE 81L 1068103**  
BROOKMORE LADY JANE 1J

N BAR EMULATION EXT  
MVF TIBBIE 64F  
UX GRAND SLAM 12G  
BROOKMORE LADY JANE 11G

CARCASS	
MAR.	3.90
BF	7.62
REA	12.40
%LMY	61.04

ACTUAL BW	ADJ. 205	ADJ. 365	EPDS				MAT.	DAM'S AGE
			BW	WW	YW	MILK		
96	690	1268	4.4 38%	45 31%	80 27%	18 26%	41	6

70

BROOKMORE ANGUS  
**BROOKMORE FREIGHTLINER 33T**

MALE JVJ 33T 1376020 JANUARY 10 2007

BON VIEW BANDO 598  
**CONNEALY FREIGHTLINER 964749**  
JOANA ERICA OF CONANGA

TEHAMA BANDO 155  
BON VIEW DORA 56  
NICHOLS HEAVY DUTY X100  
JARNE ERICA OF CONANGA

W C C SPECIAL DESIGN L309  
**BROOKMORE MAIDEN 38R 1293348**  
BROOKMORE MAIDEN 129M

BON VIEW NEW DESIGN 878  
N BAR PRIMROSE 2424  
BROOKMORE TOUCHSTONE 2F  
BROOKMORE MAIDEN 70G

CARCASS	
MAR.	5.10
BF	9.52
REA	12.34
%LMY	59.04

ACTUAL BW	ADJ. 205	ADJ. 365	EPDS				MAT.	DAM'S AGE
			BW	WW	YW	MILK		
80	767	1328	2.3 37%	50 30%	90 28%	21 24%	46	2

73

BROOKMORE ANGUS  
**BROOKMORE FREIGHTLINER 187T**

MALE JVJ 187T 1375936 FEBRUARY 11 2007

BON VIEW BANDO 598  
**CONNEALY FREIGHTLINER 964749**  
JOANA ERICA OF CONANGA

TEHAMA BANDO 155  
BON VIEW DORA 56  
NICHOLS HEAVY DUTY X100  
JARNE ERICA OF CONANGA

BON VIEW NEW DESIGN 878  
**BROOKMORE ELBA 1N 1210797**  
MVF ELBA 45L

B/R NEW DESIGN 036  
BON VIEW GAMMER 85  
G D A R ROLLS ROYCE 203  
HOMESTEADER ELBA 8C

CARCASS	
MAR.	5.10
BF	10.54
REA	14.32
%LMY	59.61

ACTUAL BW	ADJ. 205	ADJ. 365	EPDS				MAT.	DAM'S AGE
			BW	WW	YW	MILK		
86	778	1436	1.3 38%	48 31%	87 28%	21 25%	45	4

71

BROOKMORE ANGUS  
**BROOKMORE FREIGHTLINER 40T**

MALE JVJ 40T 1376053 JANUARY 13 2007

BON VIEW BANDO 598  
**CONNEALY FREIGHTLINER 964749**  
JOANA ERICA OF CONANGA

TEHAMA BANDO 155  
BON VIEW DORA 56  
NICHOLS HEAVY DUTY X100  
JARNE ERICA OF CONANGA

SITZ ALLIANCE 6595  
**BROOKMORE TIBBIE 189R 1293191**  
BABA TIBBIE 160G

SITZ TRAVELER 8180  
SITZ BARBARAMERE JET 2698  
EBON HILL EXTRA GOLD 31'95  
BABA TIBBIE 5D

CARCASS	
MAR.	4.05
BF	7.17
REA	14.32
%LMY	63.06

ACTUAL BW	ADJ. 205	ADJ. 365	EPDS				MAT.	DAM'S AGE
			BW	WW	YW	MILK		
90	706	1332	4.4 32%	45 24%	84 28%	18 27%	41	2



LOT 73 - BROOKMORE FREIGHTLINER 187T

# CATTLEMAN'S CONNECTION ANGUS BULL SALE 2008

## 74

### BROOKMORE ANGUS BROOKMORE FREIGHTLINER 229T

MALE JVJ 229T 1375799 FEBRUARY 20 2007

BON VIEW BANDO 598  
CONNEALY FREIGHTLINER 964749  
JOANA ERICA OF CONANGA

TEHAMA BANDO 155  
BON VIEW DORA 56  
NICHOLS HEAVY DUTY X100  
JARNE ERICA OF CONANGA

DAVIS MILLENNIUM 7518  
BROOKMORE PRINCESS 95K 1001436  
BROOKMORE PRINCESS 57Z

N BAR EMULATION EXT  
FINKS 982 OF 666 N T  
MV F EXPECTATION 21X  
BROOKMORE PRINCESS 84X

CARCASS	
MAR.	3.70
BF	7.64
REA	12.17
%LMY	60.83

ACTUAL BW	ADJ. 205	ADJ. 365	EPDS					MAT.	DAM'S AGE
			BW	WW	YW	MILK			
78	661	1337	2.8 38%	45 32%	84 29%	14 26%	37	7	



LOT 75 - MVF BEEF MAKER 24T

TAKE ADVANTAGE OF  
OUR WINTERING POLICY

We offer  
free board on bulls  
until April 1, 2008



## BOYD BEEF MAKER 3069

BW: +4.8 WW: +50 YW: +95 Milk: +32 TM: +57 YG: +46

- Beef Maker is siring more power and performance than his sire with the same added carcass value
- Offspring are thick made, daughters have impeccable udders

12 SONS SELL

## 75

### MOUNTAIN VIEW FARMS LTD. MV F BEEF MAKER 24T

MALE

ABA 24T 1419787 FEBRUARY 08 2007

C A FUTURE DIRECTION 5321  
BOYD BEEF MAKER 3069 1244507  
BOYD FOREVER LADY 7120

G A R PRECISION 1680  
C A MISS POWER FIX 308  
A A R NEW TREND  
S V F FOREVER LADY 57D

CARCASS	
MAR.	4.20
BF	4.76
REA	14.98
%LMY	66.06

V D A R NEW TREND 933  
MVRB TIBBIE 14F 856288  
MVRB TIBBIE 18D

V D A R NEW TREND 315  
MISS WIX 903 OF MC CUMBER  
RITO 2100 G D A R  
MV F TIBBIE 48W

ACTUAL BW	ADJ. 205	ADJ. 365	EPDS					MAT.	DAM'S AGE
			BW	WW	YW	MILK			
98	882	1471	I+5.5 5%	I+40 5%	I+77 5%	I+23 5%	I+43	11	

- Here is a powerful calf with a little extra frame - if you are looking for a herd bull to give you those extra pound in the fall look no further

## 76

### MOUNTAIN VIEW FARMS LTD. MV F BEEF MAKER 48T

MALE

ABA 48T 1419802 FEBRUARY 13 2007

C A FUTURE DIRECTION 5321  
BOYD BEEF MAKER 3069 1244507  
BOYD FOREVER LADY 7120

G A R PRECISION 1680  
C A MISS POWER FIX 308  
A A R NEW TREND  
S V F FOREVER LADY 57D

CARCASS	
MAR.	5.55
BF	6.19
REA	12.27
%LMY	62.39

DWAJO CHIEF 92E  
CRESCENT CREEK BARANDA 7H 918309  
CRESCENT CREEK BARANDA 7C

GDAR SV F CHIEF  
WICKLOW MISS LUCY 3C  
BOTANY ANGUS MAX 5A  
CRESCENT CREEK BARANDA 52Z

ACTUAL BW	ADJ. 205	ADJ. 365	EPDS					MAT.	DAM'S AGE
			BW	WW	YW	MILK			
91	687	1193	I+3.5 5%	I+40 5%	I+71 5%	I+20 5%	I+40	9	

## 77

### MOUNTAIN VIEW FARMS LTD. MV F BEEF MAKER 69T

MALE

ABA 69T 1419835 FEBRUARY 20 2007

C A FUTURE DIRECTION 5321  
BOYD BEEF MAKER 3069 1244507  
BOYD FOREVER LADY 7120

G A R PRECISION 1680  
C A MISS POWER FIX 308  
A A R NEW TREND  
S V F FOREVER LADY 57D

CARCASS	
MAR.	6.00
BF	4.29
REA	11.07
%LMY	63.36

TC STOCKMAN 365  
MVRB TIBBIE 98K 1017527  
MVRB TIBBIE 77E

TC STOCKMAN  
TC PRIDE 0014  
MINERTS FORTUNE 2000  
MV F TIBBIE 48W

ACTUAL BW	ADJ. 205	ADJ. 365	EPDS					MAT.	DAM'S AGE
			BW	WW	YW	MILK			
87	572	1085	I+4.4 5%	I+41 5%	I+79 5%	I+22 5%	I+43	7	

Moderate in frame but tremendous thickness and hair

# CATTLEMAN'S CONNECTION ANGUS BULL SALE 2008

## 78

MOUNTAIN VIEW FARMS LTD.  
**MVF BEEF MAKER 87T**

MALE ABA 87T 1419819 FEBRUARY 26 2007

C A FUTURE DIRECTION 5321  
**BOYD BEEF MAKER 3069 1244507**  
 BOYD FOREVER LADY 7120

G A R PRECISION 1680  
 C A MISS POWER FIX 308  
 A A R NEW TREND  
 S V F FOREVER LADY 57D

CARCASS	
MAR.	4.65
BF	4.29
REA	13.11
%LMY	65.02

CONNELLY DATELINE  
**BROOKMORE MISS EVA 35J 976627**  
 BROOKMORE MISS EVA 111G

D H D TRAVELER 6807  
 EILA EILA OF CONANGA  
 EARLY SUNSET EXTRA 56B  
 BROOKMORE MISS EVA 91D

ACTUAL BW	ADJ. 205	ADJ. 365	EPDS					DAM'S AGE
			BW	WW	YW	MILK	MAT.	
94	780	1271	I+4.3 5%	I+46 5%	I+85 5%	I+24 5%	I+47	8

- A maternal brother sold at the 2007 Cattleman's Connection Bull Sale to Gerard Cattle Company, Innisfail, AB for \$6,1000
- The dam knows how to get 'er done as far as raising herd bulls



LOT 78 - MVF BEEF MAKER 87T

## 79

MOUNTAIN VIEW FARMS LTD.  
**MVF BEEF MAKER 105T**

MALE ABA 105T 1419807 MARCH 02 2007

C A FUTURE DIRECTION 5321  
**BOYD BEEF MAKER 3069 1244507**  
 BOYD FOREVER LADY 7120

G A R PRECISION 1680  
 C A MISS POWER FIX 308  
 A A R NEW TREND  
 S V F FOREVER LADY 57D

CARCASS	
MAR.	4.70
BF	6.19
REA	13.49
%LMY	63.38

MVSB LIMITED EDITION 10E  
**MVF MAYFLOWER 114H 926180**  
 MVF MAYFLOWER 82E

DALRENE EXTRA 36A  
 SANDY BAR ANNIE K 16C  
 GNS ALLIANCE 9C  
 OLE SASKALTA MAYFLOWER 339C

ACTUAL BW	ADJ. 205	ADJ. 365	EPDS					DAM'S AGE
			BW	WW	YW	MILK	MAT.	
89	713	1329	I+4.2 5%	I+38 5%	I+73 5%	I+12 5%	I+31	9

- Dam is a maternal sister to MVF Mayflower 30G, the Reserve Champion Female at the 1998 Edmonton Farmfair and top selling female at the 1998 Superstar Sale to LLB Angus Erskine AB
- A maternal brother sold at the 2006 Cattleman's Connection to Gerald Doucette, Austin, MB for \$2,400
- Another maternal brother sold at the 2007 Cattleman's Connection Bull Sale to Randy Bartel, Roblin, MB for \$3,400



LOT 79 - MVF BEEF MAKER 105T

## 80

BROOKMORE ANGUS  
**BROOKMORE BEEF MAKER 64T**

MALE JVJ 64T 1375756 JANUARY 20 2007

C A FUTURE DIRECTION 5321  
**BOYD BEEF MAKER 3069 1244507**  
 BOYD FOREVER LADY 7120

G A R PRECISION 1680  
 C A MISS POWER FIX 308  
 A A R NEW TREND  
 S V F FOREVER LADY 57D

CARCASS	
MAR.	4.90
BF	9.07
REA	13.01
%LMY	60.05

MVSB LIMITED EDITION 10E  
**BROOKMORE TIBBIE 56G 882083**  
 BROOKMORE TIBBIE 38E

DALRENE EXTRA 36A  
 SANDY BAR ANNIE K 16C  
 MINERTS FORTUNE 2000  
 BROOKMORE TIBBIE 30B

ACTUAL BW	ADJ. 205	ADJ. 365	EPDS					DAM'S AGE
			BW	WW	YW	MILK	MAT.	
80	653	1283	3.5 39%	46 32%	78 28%	15 18%	38	10



LOT 80 - BROOKMORE BEEF MAKER 64T

# CATTLEMAN'S CONNECTION ANGUS BULL SALE 2008



LOT 81 - BROOKMORE BEEFMAKER 81T

81

## BROOKMORE ANGUS BROOKMORE BEEFMAKER 81T

MALE JVV 81T 1376075 JANUARY 22 2007

C A FUTURE DIRECTION 5321  
BOYD BEEF MAKER 3069 1244507  
BOYD FOREVER LADY 7120

G A R PRECISION 1680  
C A MISS POWER FIX 308  
A A R NEW TREND  
S V F FOREVER LADY 57D

MVF PERFECT BLEND 32H  
BROOKMORE LADY JANE 190M 1112668  
BROOKMORE LADY JANE 100J

N BAR EMULATION EXT  
MVF TIBBIE 64F  
EARLY SUNSET EXTRA 56B  
BROOKMORE LADY JANE 68W

CARCASS	
MAR.	4.75
BF	8.57
REA	15.82
%LMY	62.85

ACTUAL BW	ADJ. 205	ADJ. 365	EPDS					DAM'S AGE
			BW	WW	YW	MILK	MAT.	
110	726	1352	8.2 38%	47 30%	85 26%	25 15%	49	5

82

## BROOKMORE ANGUS BROOKMORE BEEF MAKER 85T

MALE JVV 85T 1375985 JANUARY 23 2007

C A FUTURE DIRECTION 5321  
BOYD BEEF MAKER 3069 1244507  
BOYD FOREVER LADY 7120

G A R PRECISION 1680  
C A MISS POWER FIX 308  
A A R NEW TREND  
S V F FOREVER LADY 57D

VERMILION DATELINE 7078  
BROOKMORE ALETA 116P 1211909  
BROOKMORE ALETA 30F

CONNELLY DATELINE  
VERMILION BLACKBIRD 5044  
MINERTS FORTUNE 2000  
BROOKMORE ALETA 121D

CARCASS	
MAR.	5.60
BF	10.02
REA	13.72
%LMY	59.66

ACTUAL BW	ADJ. 205	ADJ. 365	EPDS					DAM'S AGE
			BW	WW	YW	MILK	MAT.	
98	803	1362	5.6 38%	57 30%	101 26%	28 15%	57	3



LOT 82 - BROOKMORE BEEF MAKER 85T

83

## BROOKMORE ANGUS BROOKMORE BEEFMAKER 134T

MALE JVV 134T 1375814 JANUARY 31 2007

C A FUTURE DIRECTION 5321  
BOYD BEEF MAKER 3069 1244507  
BOYD FOREVER LADY 7120

G A R PRECISION 1680  
C A MISS POWER FIX 308  
A A R NEW TREND  
S V F FOREVER LADY 57D

DAVIS MILLENNIUM 7518  
BROOKMORE ROSE 34L 1067909  
BROOKMORE ROSE 94E

N BAR EMULATION EXT  
FINKS 982 OF 666 N T  
MVHF STARDOM 12A  
BROOKMORE ROSE 103W

CARCASS	
MAR.	5.50
BF	9.05
REA	15.16
%LMY	61.82

ACTUAL BW	ADJ. 205	ADJ. 365	EPDS					DAM'S AGE
			BW	WW	YW	MILK	MAT.	
88	660	1393	4.6 38%	43 32%	81 28%	23 17%	45	6

84

## BROOKMORE ANGUS BROOKMORE BEEF MAKER 175T

MALE JVV 175T 1375965 FEBRUARY 09 2007

C A FUTURE DIRECTION 5321  
BOYD BEEF MAKER 3069 1244507  
BOYD FOREVER LADY 7120

G A R PRECISION 1680  
C A MISS POWER FIX 308  
A A R NEW TREND  
S V F FOREVER LADY 57D

F A R KRUGERRAND 410H  
BROOKMORE TIBBIE 15P 1212248  
BROOKMORE TIBBIE 46M

KRUGERRAND OF DONAMERE 490  
F A R ERIANNA 286F  
SITZ ALLIANCE 6595  
BROOKMORE TIBBIE 124K

CARCASS	
MAR.	5.05
BF	9.52
REA	12.94
%LMY	59.53

ACTUAL BW	ADJ. 205	ADJ. 365	EPDS					DAM'S AGE
			BW	WW	YW	MILK	MAT.	
84	725	1369	3.5 38%	50 30%	95 25%	26 15%	51	3

85

## BROOKMORE ANGUS BROOKMORE BEEF MAKER 178T

MALE JVV 178T 1375746 TWIN FEBRUARY 10 2007

C A FUTURE DIRECTION 5321  
BOYD BEEF MAKER 3069 1244507  
BOYD FOREVER LADY 7120

G A R PRECISION 1680  
C A MISS POWER FIX 308  
A A R NEW TREND  
S V F FOREVER LADY 57D

CENTURY TOUCHSTONE 131  
BROOKMORE HEROINE 15F 867252  
BROOKMORE HEROINE 5D

GINGER HILL DUSTER 89  
WAR SARA 7142 0003  
EARLY SUNSET EXTRA 56B  
BROOKMORE HEROINE 94W

CARCASS	
MAR.	5.20
BF	10.48
REA	13.22
%LMY	58.78

ACTUAL BW	ADJ. 205	ADJ. 365	EPDS					DAM'S AGE
			BW	WW	YW	MILK	MAT.	
80	768	1479	1+4.0 5%	1+42 5%	1+79 5%	1+24 5%	1+45	11



LOT 85 - BROOKMORE BEEF MAKER 178T

# CATTLEMAN'S CONNECTION ANGUS BULL SALE 2008

## 86

BROOKMORE ANGUS  
**BROOKMORE BEEF MAKER 199T**  
 MALE JVJ 199T 1375764 FEBRUARY 13 2007

C A FUTURE DIRECTION 5321  
**BOYD BEEF MAKER 3069 1244507**  
 BOYD FOREVER LADY 7120

G A R PRECISION 1680  
 C A MISS POWER FIX 308  
 A A R NEW TREND  
 S V F FOREVER LADY 57D

CARCASS	
MAR.	4.75
BF	7.62
REA	14.05
%LMY	62.38

BROOKMORE TOUCHSTONE 2F  
**BROOKMORE LADY JANE 68H 918847**  
 BROOKMORE LADY JANE 42D

CENTURY TOUCHSTONE 131  
 BROOKMORE HEROINE 56C  
 EARLY SUNSET EXTRA 30Z  
 BROOKMORE LADY JANE 44B

ACTUAL BW	ADJ. 205	ADJ. 365	EPDS					DAM'S AGE
			BW	WW	YW	MILK	MAT.	
96	695	1319	5.3 39%	40 32%	74 28%	21 18%	41	9



### BOYD ON TARGET 1083

**BW: +3.1 WW: +55 YW: +110 Milk: +18 TM: +46 YG: +55**

- On Target covers all the bases in terms of pedigree numbers and phenotype.

10 SONS SELL



LOT 90 - MVF ON TARGET 47T

## 87

MOUNTAIN VIEW FARMS LTD.  
**MVF ON TARGET 10T**  
 MALE ABA 10T 1419914 FEBRUARY 03 2007

S A F 598 BANDO 5175  
**BOYD ON TARGET 1083 1302247**  
 BOYD FOREVER LADY 7095

BON VIEW BANDO 598  
 S A F ROYAL LASS 1002  
 D H D TRAVELER 6807  
 S V F FOREVER LADY 57D

CARCASS	
MAR.	4.90
BF	5.75
REA	12.12
%LMY	62.72

BELVIN KINGPIN 24'00  
**KENOSSE PARK BELLE 24P 1290016**  
 KENOSSE PARK BELLE 126D

CONNEALY DATELINE  
 BELVIN GEORGINA 52'95  
 MVF DIRECTOR 30A  
 KENOSSE PARK BELLE 24Y

ACTUAL BW	ADJ. 205	ADJ. 365	EPDS					DAM'S AGE
			BW	WW	YW	MILK	MAT.	
90	621	1195	I+3.8 5%	I+46 5%	I+85 5%	I+21 5%	I+43	3

## 88

MOUNTAIN VIEW FARMS LTD.  
**MVF ON TARGET 14T**  
 MALE ABA 14T 1419878 FEBRUARY 03 2007

S A F 598 BANDO 5175  
**BOYD ON TARGET 1083 1302247**  
 BOYD FOREVER LADY 7095

BON VIEW BANDO 598  
 S A F ROYAL LASS 1002  
 D H D TRAVELER 6807  
 S V F FOREVER LADY 57D

CARCASS	
MAR.	4.30
BF	7.14
REA	13.47
%LMY	62.40

VERMILION DATELINE 7078  
**MVF TIBBIE 003N 1175460**  
 GREENBUSH TIBBIE 15G

CONNEALY DATELINE  
 VERMILION BLACKBIRD 5044  
 G D A R OSCAR 711  
 GREENBUSH TIBBIE 6D

ACTUAL BW	ADJ. 205	ADJ. 365	EPDS					DAM'S AGE
			BW	WW	YW	MILK	MAT.	
93	753	1329	I+4.3 5%	I+50 5%	I+96 5%	I+14 5%	I+39	4

- This has been a stand out since spring.

## 89

MOUNTAIN VIEW FARMS LTD.  
**MVF ON TARGET 28T**  
 MALE ABA 28T 1419815 FEBRUARY 08 2007

S A F 598 BANDO 5175  
**BOYD ON TARGET 1083 1302247**  
 BOYD FOREVER LADY 7095

BON VIEW BANDO 598  
 S A F ROYAL LASS 1002  
 D H D TRAVELER 6807  
 S V F FOREVER LADY 57D

CARCASS	
MAR.	4.75
BF	5.71
REA	12.41
%LMY	62.99

BROOKMORE EXTRA 145D  
**HCA MY PRIDE 18J 991802**  
 BELMORAL PRIDE 42'91

EARLY SUNSET EXTRA 56B  
 BROOKMORE TIBBIE 10B  
 BELMORAL STAR 4'88  
 BELMORAL PRIDE 51'84

ACTUAL BW	ADJ. 205	ADJ. 365	EPDS					DAM'S AGE
			BW	WW	YW	MILK	MAT.	
86	658	1246	I+3.3 5%	I+42 5%	I+79 5%	I+13 5%	I+34	8

## 90

MOUNTAIN VIEW FARMS LTD.  
**MVF ON TARGET 47T**  
 MALE ABA 47T 1421548 FEBRUARY 13 2007

S A F 598 BANDO 5175  
**BOYD ON TARGET 1083 1302247**  
 BOYD FOREVER LADY 7095

BON VIEW BANDO 598  
 S A F ROYAL LASS 1002  
 D H D TRAVELER 6807  
 S V F FOREVER LADY 57D

CARCASS	
MAR.	4.90
BF	5.27
REA	11.55
%LMY	62.74

MVF STOCKMAN 122H  
**MVF BLACKBIRD 148L 1056499**  
 SASKALTA BLACKBIRD 5 641F

TC STOCKMAN 365  
 MVF TIBBIE 14C  
 SPRUCE VIEW ESSOTERIC 31A  
 BLACKBIRD T OLE SASKALTA 154A

ACTUAL BW	ADJ. 205	ADJ. 365	EPDS					DAM'S AGE
			BW	WW	YW	MILK	MAT.	
87	660	1172	I+2.6 5%	I+40 5%	I+80 5%	I+18 5%	I+38	6

# CATTLEMAN'S CONNECTION ANGUS BULL SALE 2008



LOT 92 - MVF ON TARGET 66T



LOT 93 - MVF ON TARGET 80T

## 91 MOUNTAIN VIEW FARMS LTD. MVF ON TARGET 53T

MALE ABA 53T 1420020 FEBRUARY 16 2007

S A F 598 BANDO 5175  
**BOYD ON TARGET 1083 1302247**  
BOYD FOREVER LADY 7095

BON VIEW BANDO 598  
S A F ROYAL LASS 1002  
D H D TRAVELER 6807  
S V F FOREVER LADY 57D

CARCASS	
MAR.	4.15
BF	4.29
REA	10.87
%LMY	63.20

TC STOCKMAN 365  
**MVF TIBBIE 34L 1056595**  
MVKD TIBBIE 850H

TC STOCKMAN  
TC PRIDE 0014  
O S U 6T6 ULTRA  
MVRB TIBBIE 24C

ACTUAL BW	ADJ. 205	ADJ. 365	EPDS					DAM'S AGE
			BW	WW	YW	MILK	MAT.	
79	640	1229	I+2.6 5%	I+48 5%	I+94 5%	I+21 5%	I+44	6

## 94 MOUNTAIN VIEW FARMS LTD. MVF ON TARGET 85T

MALE ABA 85T 1419950 FEBRUARY 25 2007

S A F 598 BANDO 5175  
**BOYD ON TARGET 1083 1302247**  
BOYD FOREVER LADY 7095

BON VIEW BANDO 598  
S A F ROYAL LASS 1002  
D H D TRAVELER 6807  
S V F FOREVER LADY 57D

CARCASS	
MAR.	4.85
BF	6.67
REA	13.79
%LMY	63.14

NICHOLS EXTRA H6  
**MVF TIBBIE 28P 1222334**  
MVF TIBBIE 132J

N BAR EMULATION EXT  
NICHOLS EILEEN MAY F261  
RITO 9FB3 OF 5H11 FULLBACK  
MVF TIBBIE 14C

ACTUAL BW	ADJ. 205	ADJ. 365	EPDS					DAM'S AGE
			BW	WW	YW	MILK	MAT.	
87	790	1457	I+4.0 5%	I+53 5%	I+101 5%	I+23 5%	I+49	3

## 92 MOUNTAIN VIEW FARMS LTD. MVF ON TARGET 66T

MALE ABA 66T 1414354 FEBRUARY 19 2007

S A F 598 BANDO 5175  
**BOYD ON TARGET 1083 1302247**  
BOYD FOREVER LADY 7095

BON VIEW BANDO 598  
S A F ROYAL LASS 1002  
D H D TRAVELER 6807  
S V F FOREVER LADY 57D

CARCASS	
MAR.	5.05
BF	12.44
REA	15.93
%LMY	58.98

YOUNKIN TRIUMPH 4966  
**BXB MISS TRIUMPH 126L 1124124**  
MVF LADY 72J

BRUSETT SPECTRUM 62  
YOUNKIN ROSE 4952  
MVS LIMITED EDITION 10E  
LADY BATSCHOL 105T

ACTUAL BW	ADJ. 205	ADJ. 365	EPDS					DAM'S AGE
			BW	WW	YW	MILK	MAT.	
101	942	1510	I+4.8 5%	I+49 5%	I+93 5%	I+13 5%	I+37	6

- Big, powerful On Target son, tons of middle and length of spine
- This calf will definitely give you those extra pounds in the fall

## 95 MOUNTAIN VIEW FARMS LTD. MVF ON TARGET 115T

MALE ABA 115T 1420003 TWIN MARCH 03 2007

S A F 598 BANDO 5175  
**BOYD ON TARGET 1083 1302247**  
BOYD FOREVER LADY 7095

BON VIEW BANDO 598  
S A F ROYAL LASS 1002  
D H D TRAVELER 6807  
S V F FOREVER LADY 57D

CARCASS	
MAR.	5.00
BF	6.19
REA	12.24
%LMY	62.36

MVF STOCKMAN 9H  
**MVF TIBBIE 260N 1175032**  
MVHF TIBBIE 39B

TC STOCKMAN 365  
MVF TIBBIE 14C  
V D A R NEW TREND 315  
MVHF TIBBIE 31Z

ACTUAL BW	ADJ. 205	ADJ. 365	EPDS					DAM'S AGE
			BW	WW	YW	MILK	MAT.	
84	780	1240	I+4.0 5%	I+43 5%	I+84 5%	I+18 5%	I+39	4

## 93 MOUNTAIN VIEW FARMS LTD. MVF ON TARGET 80T

MALE ABA 80T 1419876 FEBRUARY 23 2007

S A F 598 BANDO 5175  
**BOYD ON TARGET 1083 1302247**  
BOYD FOREVER LADY 7095

BON VIEW BANDO 598  
S A F ROYAL LASS 1002  
D H D TRAVELER 6807  
S V F FOREVER LADY 57D

CARCASS	
MAR.	5.00
BF	6.69
REA	12.37
%LMY	61.96

MVF FULLBACK 127J  
**MVF LUCY 211M 1101576**  
S AND T LUCY 13X

RITO 9FB3 OF 5H11 FULLBACK  
MVF TIBBIE 14C  
BROST POWER DRIVE  
DOUBLE FOUR LUCY 133S

ACTUAL BW	ADJ. 205	ADJ. 365	EPDS					DAM'S AGE
			BW	WW	YW	MILK	MAT.	
90	770	1339	I+3.7 5%	I+44 5%	I+83 5%	I+19 5%	I+41	5

- Tremendous length and capacity

## 96 MOUNTAIN VIEW FARMS LTD. MVMM ON TARGET 116T

MALE MVMM 116T 1420061 MARCH 04 2007

S A F 598 BANDO 5175  
**BOYD ON TARGET 1083 1302247**  
BOYD FOREVER LADY 7095

BON VIEW BANDO 598  
S A F ROYAL LASS 1002  
D H D TRAVELER 6807  
S V F FOREVER LADY 57D

CARCASS	
MAR.	4.70
BF	6.19
REA	12.15
%LMY	62.29

STEVENSON ROYCE 741C  
**MVMM TIBBIE 105K 1017127**  
MVF TIBBIE 16D

G D A R ROYCE 131  
AHLGRENS ESTELLA 2758 E T E  
HOFF GREAT WESTERN S C 456  
MVF TIBBIE 86B

ACTUAL BW	ADJ. 205	ADJ. 365	EPDS					DAM'S AGE
			BW	WW	YW	MILK	MAT.	
92	726	1359	I+3.8 5%	I+47 5%	I+95 5%	I+17 5%	I+40	7

# CATTLEMAN'S CONNECTION ANGUS BULL SALE 2008



## BUSHES STRUT 756

BW: +7.0 WW: +87 YW: +154 Milk: +22 TM: +66 YG: +67

8 SONS SELL



LOT 99 - BROOKMORE STRUT 150T

# 97

## BROOKMORE ANGUS BROOKMORE STRUT 54T

MALE JVJ 54T 1376071 JANUARY 19 2007

S A F STRATEGY 9015  
BUSHES STRUT 756 1254556  
BUSHES LADY LA BELLE 457

S A F FOCUS OF E R  
S A F ROYAL QUEEN 5084  
VERMILION DATELINE 7078  
BUSHES LA BELLE 518

CARCASS	
MAR.	5.65
BF	16.20
REA	14.39
%LMY	53.88

MVF PERFECT BLEND 32H  
BROOKMORE PRINCESS 161M 1112613  
BROOKMORE PRINCESS 104H

N BAR EMULATION EXT  
MVF TIBBIE 64F  
BROOKMORE LANCER 32F  
BROOKMORE PRINCESS 76C

ACTUAL BW	ADJ. 205	ADJ. 365	EPDS				MAT.	DAM'S AGE
			BW	WW	YW	MILK		
90	700	1408	5.2 38%	59 31%	109 23%	15 15%	45	5

# 98

## BROOKMORE ANGUS BROOKMORE STRUT 74T

MALE JVJ 74T 1375847 JANUARY 22 2007

S A F STRATEGY 9015  
BUSHES STRUT 756 1254556  
BUSHES LADY LA BELLE 457

S A F FOCUS OF E R  
S A F ROYAL QUEEN 5084  
VERMILION DATELINE 7078  
BUSHES LA BELLE 518

CARCASS	
MAR.	5.45
BF	13.81
REA	14.81
%LMY	56.67

EBON HILL EQUALIZER 49'96  
BROOKMORE MARY 237L 1067769  
BROOKMORE MARY 63Z

BELVIN BLACK MAGIC 42'92  
EARLY SUNSET PRIDE 66C  
PYRAMID BACK STREET 6W  
BROOKMORE MARY 100X

ACTUAL BW	ADJ. 205	ADJ. 365	EPDS				MAT.	DAM'S AGE
			BW	WW	YW	MILK		
88	645	1330	4.6 38%	49 31%	88 22%	16 15%	41	6



LOT 97 - BROOKMORE STRUT 54T

# 99

## BROOKMORE ANGUS BROOKMORE STRUT 150T

MALE JVJ 150T 1375929 FEBRUARY 04 2007

S A F STRATEGY 9015  
BUSHES STRUT 756 1254556  
BUSHES LADY LA BELLE 457

S A F FOCUS OF E R  
S A F ROYAL QUEEN 5084  
VERMILION DATELINE 7078  
BUSHES LA BELLE 518

CARCASS	
MAR.	4.60
BF	13.33
REA	14.92
%LMY	57.24

G D A R ROLLS ROYCE 203  
BROOKMORE ANNE 126M 1112660  
GREENBUSH ANNE 37J

G D A R ROYCE 131  
G D A R FOREVER LADY 719  
MCRAE'S FOCUS 33F  
GREENBUSH ANNE 17B

ACTUAL BW	ADJ. 205	ADJ. 365	EPDS				MAT.	DAM'S AGE
			BW	WW	YW	MILK		
102	753	1470	6.1 38%	63 31%	111 23%	16 15%	48	5

# 100

## BROOKMORE ANGUS BROOKMORE STRUT 154T

MALE JVJ 154T 1375743 FEBRUARY 04 2007

S A F STRATEGY 9015  
BUSHES STRUT 756 1254556  
BUSHES LADY LA BELLE 457

S A F FOCUS OF E R  
S A F ROYAL QUEEN 5084  
VERMILION DATELINE 7078  
BUSHES LA BELLE 518

CARCASS	
MAR.	4.70
BF	10.48
REA	13.22
%LMY	58.78

MINERTS FORTUNE 2000  
BROOKMORE TIBBIE 38E 822745  
BROOKMORE TIBBIE 30B

SCHURRTOP FORTUNE 3261  
MINERTS EDELLA 951  
L A MAGIC  
MVHF TIBBIE 5Z

ACTUAL BW	ADJ. 205	ADJ. 365	EPDS				MAT.	DAM'S AGE
			BW	WW	YW	MILK		
98	756	1360	6.7 39%	67 32%	113 25%	13 17%	47	12



LOT 100 - BROOKMORE STRUT 154T

# CATTLEMAN'S CONNECTION ANGUS BULL SALE 2008

## 102

BROOKMORE ANGUS  
**BROOKMORE STRUT 180T**

MALE JVJ 180T 1375795 FEBRUARY 10 2007

S A F STRATEGY 9015  
**BUSHES STRUT 756 1254556**  
BUSHES LADY LA BELLE 457

S A F FOCUS OF E R  
S A F ROYAL QUEEN 5084  
VERMILION DATELINE 7078  
BUSHES LA BELLE 518

CARCASS	
MAR.	4.60
BF	11.49
REA	13.79
%LMY	58.21

MVF PERFECT BLEND 32H  
**BROOKMORE PRINCESS 62K 1001701**  
BROOKMORE PRINCESS 106H

N BAR EMULATION EXT  
MVF TIBBIE 64F  
EBON HILL EXTRA GOLD 31'95  
BROOKMORE PRINCESS 29F

ACTUAL BW	ADJ. 205	ADJ. 365	EPDS					DAM'S AGE
			BW	WW	YW	MILK	MAT.	
100	749	1430	6.7 38%	64 32%	112 23%	17 16%	49	7

## 103

BROOKMORE ANGUS  
**BROOKMORE STRUT 206T**

MALE JVJ 206T 1375811 FEBRUARY 13 2007

S A F STRATEGY 9015  
**BUSHES STRUT 756 1254556**  
BUSHES LADY LA BELLE 457

S A F FOCUS OF E R  
S A F ROYAL QUEEN 5084  
VERMILION DATELINE 7078  
BUSHES LA BELLE 518

CARCASS	
MAR.	4.35
BF	5.75
REA	14.40
%LMY	64.58

BROOKMORE EXTRA GOLD 135J  
**KEMBAR LUCY 6L 1058180**  
KEMBAR LUCY 126H

EBON HILL EXTRA GOLD 31'95  
BROOKMORE FLORA 40E  
S A F FAME  
KEMBAR LUCY 6A

ACTUAL BW	ADJ. 205	ADJ. 365	EPDS					DAM'S AGE
			BW	WW	YW	MILK	MAT.	
84	727	1418	3.9 38%	59 31%	104 23%	14 15%	44	6

## 104

BROOKMORE ANGUS  
**BROOKMORE STRUT 221T**

MALE JVJ 221T 1375749 FEBRUARY 17 2007

S A F STRATEGY 9015  
**BUSHES STRUT 756 1254556**  
BUSHES LADY LA BELLE 457

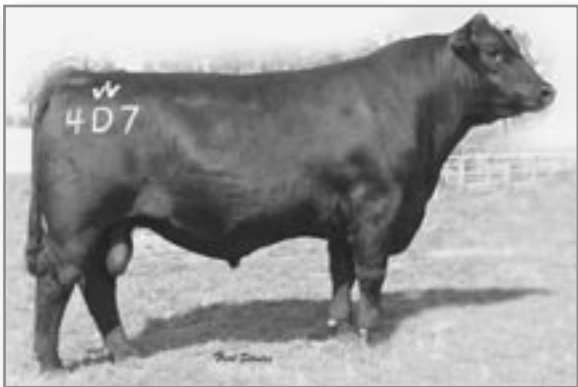
S A F FOCUS OF E R  
S A F ROYAL QUEEN 5084  
VERMILION DATELINE 7078  
BUSHES LA BELLE 518

CARCASS	
MAR.	4.40
BF	7.17
REA	13.70
%LMY	62.56

G D A R OSCAR 711  
**BROOKMORE KARAMA 40F 867189**  
BROOKMORE KARAMA 77W

BALDRIDGE OSCAR  
L T FOREVER LADY 395 G D A R  
MOUNTAIN VIEW CRACKER JACK 18R  
MOUNTAIN VIEW PRIDE KARAMA 82G

ACTUAL BW	ADJ. 205	ADJ. 365	EPDS					DAM'S AGE
			BW	WW	YW	MILK	MAT.	
88	727	1306	4.3 39%	54 32%	96 25%	15 17%	42	11



**RITO 4D7 OF 2536 338**

**BW: +2.0 WW: +55 YW: +101 Milk: +31 TM: +59 YG: +46**

2 SONS SELL

VIEW THE  
CATTLEMAN'S CONNECTION  
ON THE WORLD WIDE WEB

Check for  
updated weights &  
scrotal measurements at  
[www.mountainviewfarms.ca](http://www.mountainviewfarms.ca)



LOT 105 - MVF RITO 4D7 601T

## 105

MOUNTAIN VIEW FARMS LTD.  
**MVF RITO 4D7 601T**

MALE ABA 601T APPLIED ET JANUARY 25, 2007 2007

HYLINE RIGHT TIME 338  
**RITO 4D7 OF 2536 338 1305947**  
G A R PRECISION 2536

LEACHMAN RIGHT TIME  
HYLINE PRIDE 265  
G A R PRECISION 1680  
G A R EXT 2104

CARCASS	
MAR.	N/A
BF	
REA	
%LMY	

GDAR SVF TRAVELER 234D  
**MVF TIBBIE 813P 1247205**  
MVF TIBBIE 52F

TRAVELER 124 G D A R  
G D A R FOREVER LADY 718  
BON VIEW EMULATION EXT  
MVF TIBBIE 21D

ACTUAL BW	ADJ. 205	ADJ. 365	EPDS					DAM'S AGE
			BW	WW	YW	MILK	MAT.	
65	619	1169	+2.8 PE	+49 PE	+88 PE	+26 PE	+51	3

- Very long spined deep quartered son of Rito 4D7
- This calf is the result of five generations of embryo transplants

## 106

MOUNTAIN VIEW FARMS LTD.  
**MVF RITO 4D7 77T**

MALE ABA 77T 1419794 FEBRUARY 22 2007

HYLINE RIGHT TIME 338  
**RITO 4D7 OF 2536 338 1305947**  
G A R PRECISION 2536

LEACHMAN RIGHT TIME  
HYLINE PRIDE 265  
G A R PRECISION 1680  
G A R EXT 2104

CARCASS	
MAR.	4.60
BF	4.29
REA	12.21
%LMY	64.29

WHITESTONE FLY TRAVELER 3006  
**LENLOOK ROSEBUD 30G 882825**  
LENLOOK ROSEBUD 6A

HOFF HI FLYER S C 7134  
T C JESTRESS 6004  
PINE DRIVE BIG SKY  
LENLOOK ROSEBUD 40T

ACTUAL BW	ADJ. 205	ADJ. 365	EPDS					DAM'S AGE
			BW	WW	YW	MILK	MAT.	
87	712	1154	I+2.2 5%	I+43 5%	I+79 5%	I+22 5%	I+43	10

- Dam is the foundation Rosebud cow at MVF

# CATTLEMAN'S CONNECTION ANGUS BULL SALE 2008



## G A R GRID MAKER

**BW: +5.9 WW: +69 YW: +122 Milk: +10 TM: +45 YG: +53**

- Very few bulls approach Grid Maker's ability to add power and muscle to a calf crop
- His dam 2536 has truly raised the bar in terms of performance Angus cows and her strength comes through in Grid Maker calves
- His data for WW, YW & REA all rank in the top 1% of the breed

2 SONS SELL



LOT 107 - MVF GRID MAKER 131T

# 107

MOUNTAIN VIEW FARMS LTD.  
MVF GRID MAKER 131T

MALE ABA 131T 1419854 MARCH 07 2007

G D A R TRAVELER 044  
G A R GRID MAKER 1129870  
G A R PRECISION 2536

D H D TRAVELER 6807  
G D A R BLACKCAP LADY 840  
G A R PRECISION 1680  
G A R EXT 2104

CARCASS	
MAR.	5.60
BF	6.67
REA	13.05
%LMY	62.54

V F VENTURE FORWARD  
B X B MISS VENTURE 118L 1124114  
B X B MISS EXT 100J

V D A R TRAVELER 722  
LANDMARK FREDIA 911  
N BAR EMULATION EXT  
TRAILVIEW LASS 41'97

ACTUAL BW	ADJ. 205	ADJ. 365	EPDS					DAM'S AGE
			BW	WW	YW	MILK	MAT.	
101	829	1405	1+3.5 5%	1+54 5%	1+101 5%	1+17 5%	1+44	6

- A powerful Grid Maker son with tremendous EPDs and performance and pedigree stacked with breed greats
- Tons of volume, thickness and very easy fleshing

# 108

MOUNTAIN VIEW FARMS LTD.  
MVF GRID MAKER 143T

MALE ABA 143T 1419804 MARCH 10 2007

G D A R TRAVELER 044  
G A R GRID MAKER 1129870  
G A R PRECISION 2536

D H D TRAVELER 6807  
G D A R BLACKCAP LADY 840  
G A R PRECISION 1680  
G A R EXT 2104

CARCASS	
MAR.	3.85
BF	5.75
REA	12.66
%LMY	63.16

SCA TONTO 6A  
LONE STAR MADGE 18H 943748  
BACK ROADS MISS MADGE 9E

LEACHMAN TONTO  
EARLY SUNSET JUNO 49S  
BALDRIDGE ALFALFA 951  
HAPPYVALE C BAR MADGE 75R

ACTUAL BW	ADJ. 205	ADJ. 365	EPDS					DAM'S AGE
			BW	WW	YW	MILK	MAT.	
90	762	1300	1+2.6 5%	1+46 5%	1+74 5%	1+10 5%	1+33	9



**OFFSPRING FROM  
BULLS PURCHASED AT  
CATTLEMAN'S CONNECTION  
QUALIFY FOR THE  
CANADIAN ANGUS  
CERTIFICATION PROGRAM**

For tags & more info contact:  
Canadian Angus Association  
1-866-571-8093  
[www.cdnangus.ca](http://www.cdnangus.ca)



# CATTLEMAN'S CONNECTION ANGUS BULL SALE 2008



## TC FOREMAN 016

**BW: +3.0 WW: +54 YW: +97 Milk: +13 TM: +40 YG: +43**

- Sires wide hipped cattle with added style and performance

3 SONS SELL

# 109

BROOKMORE ANGUS

## BROOKMORE FOREMAN 255T

MALE JVJ 255T 1375991 FEBRUARY 27 2007

CONNEALY FOREFRONT  
TC FOREMAN 016 1112708  
TC PRIDE 8067

CONNEALY FRONTLINE  
EILEEN HEARTLAND CONANGA6443  
TC DIVIDEND 963  
TC PRIDE 6093

CARCASS	
MAR.	5.65
BF	11.96
REA	13.95
%LMY	57.85

SITZ ALLIANCE 6595  
BROOKMORE BLOSSUM 150P 1212304  
BROOKMORE BLOSSUM 128M

SITZ TRAVELER 8180  
SITZ BARBARAMERE JET 2698  
BENCHMARK STRETCH 062  
NU WAVE ROSEBUD BLOSSUM 9G

ACTUAL BW	ADJ. 205	ADJ. 365	EPDS				MAT.	DAM'S AGE
			BW	WW	YW	MILK		
80	765	1421	1.6 38%	51 30%	91 27%	17 24%	43	3

# 110

BROOKMORE ANGUS

## BROOKMORE FOREMAN 256T

MALE JVJ 256T 1376002 FEBRUARY 25 2007

CONNEALY FOREFRONT  
TC FOREMAN 016 1112708  
TC PRIDE 8067

CONNEALY FRONTLINE  
EILEEN HEARTLAND CONANGA6443  
TC DIVIDEND 963  
TC PRIDE 6093

CARCASS	
MAR.	4.30
BF	7.17
REA	11.80
%LMY	61.01

SITZ ALLIANCE 6595  
BROOKMORE MAIDEN 221P 1212334  
BROOKMORE MAIDEN 142K

SITZ TRAVELER 8180  
SITZ BARBARAMERE JET 2698  
BROOKMORE TOUCHSTONE 2F  
BROOKMORE MAIDEN 70G

ACTUAL BW	ADJ. 205	ADJ. 365	EPDS				MAT.	DAM'S AGE
			BW	WW	YW	MILK		
78	654	1246	2.7 38%	42 30%	80 27%	14 24%	35	3



LOT 111 - BROOKMORE FOREMAN 260T

# 111

BROOKMORE ANGUS

## BROOKMORE FOREMAN 260T

MALE JVJ 260T 1376003 MARCH 02 2007

CONNEALY FOREFRONT  
TC FOREMAN 016 1112708  
TC PRIDE 8067

CONNEALY FRONTLINE  
EILEEN HEARTLAND CONANGA6443  
TC DIVIDEND 963  
TC PRIDE 6093

CARCASS	
MAR.	5.30
BF	8.57
REA	14.41
%LMY	61.70

SITZ ALLIANCE 6595  
BROOKMORE ENCHANTRESS 225P 1212198  
BROOKMORE ENCHANTRESS 68L

SITZ TRAVELER 8180  
SITZ BARBARAMERE JET 2698  
MVF PERFECT BLEND 32H  
BROOKMORE ENCHANTRESS 32J

ACTUAL BW	ADJ. 205	ADJ. 365	EPDS				MAT.	DAM'S AGE
			BW	WW	YW	MILK		
88	735	1577	4.7 38%	52 30%	94 27%	18 24%	44	3

# 112

BROOKMORE ANGUS

## BROOKMORE 9074 198T

MALE JVJ 198T 1376005 FEBRUARY 12 2007

S A F 598 BANDO 5175  
LT 598 BANDO 9074 1122155  
MILL COULEE BARBARA K 323

BON VIEW BANDO 598  
S A F ROYAL LASS 1002  
MILL COULEE TIME TRAVELER 02  
MILL COULEE BARBARA K018

CARCASS	
MAR.	4.65
BF	7.62
REA	11.34
%LMY	60.18

F A R KRUGERRAND 410H  
BROOKMORE EILEENMERE 233P 1212297  
BROOKMORE EILEENMERE 111M

KRUGERRAND OF DONAMERE 490  
F A R ERIANNA 286F  
MVF PERFECT BLEND 32H  
BROOKMORE EILEENMERE 188H

ACTUAL BW	ADJ. 205	ADJ. 365	EPDS				MAT.	DAM'S AGE
			BW	WW	YW	MILK		
76	682	1302	1.0 38%	46 30%	88 27%	18 24%	41	3

# 113

BROOKMORE ANGUS

## BROOKMORE 9074 239T

MALE JVJ 239T 1376018 FEBRUARY 23 2007

S A F 598 BANDO 5175  
LT 598 BANDO 9074 1122155  
MILL COULEE BARBARA K 323

BON VIEW BANDO 598  
S A F ROYAL LASS 1002  
MILL COULEE TIME TRAVELER 02  
MILL COULEE BARBARA K018

CARCASS	
MAR.	6.20
BF	11.43
REA	12.77
%LMY	57.44

BROOKMORE STOCKMAN 89K  
KEMBAR LUCY 36R 1275372  
KEMBAR LUCY 26F

EBON HILL STOCKMAN 55'95  
BROOKMORE PRIDE 139F  
TC STOCKMAN 2164  
KEMBAR LUCY 2D

ACTUAL BW	ADJ. 205	ADJ. 365	EPDS				MAT.	DAM'S AGE
			BW	WW	YW	MILK		
82	764	1400	3.3 37%	48 30%	84 25%	22 23%	46	2



LOT 113 - BROOKMORE 9074 239T

# CATTLEMAN'S CONNECTION ANGUS BULL SALE 2008



LOT 114 - BROOKMORE BANDO 5175 142T



## BUSHS GRAND DESIGN

**BW: +1.9 WW: +48 YW: +75 Milk: +25 TM: +49 YG: +26**

- Sired the tope selling bull at the 2007 Cattleman's Connection Bull sale at \$12,100

1 SON SELLS

**114**

## BROOKMORE ANGUS BROOKMORE BANDO 5175 142T

MALE JVJ 142T 1375987 FEBRUARY 02 2007

BON VIEW BANDO 598  
S A F 598 BANDO 5175 994198  
S A F ROYAL LASS 1002

TEHAMA BANDO 155  
BON VIEW DORA 56  
V D A R NEW TREND 315  
S A F ROYAL LASS 6089

CARCASS	
MAR.	4.70
BF	9.60
REA	13.08
%LMY	59.56

BUSHS GRAND DESIGN  
BROOKMORE TIBBIE 122P 1212262  
BROOKMORE TIBBIE 51M

BON VIEW NEW DESIGN 1407  
BUSHS LADY DIVIDEND 872  
PF 7215 AVENGER 0232  
BROOKMORE TIBBIE 38E

ACTUAL BW	ADJ. 205	ADJ. 365	EPDS				MILK	MAT.	DAM'S AGE
			BW	WW	YW				
80	702	1433	3.5 38%	52 30%	89 28%	23 25%	49	3	

**115**

## BROOKMORE ANGUS BROOKMORE MATRIX 75T

MALE JVJ 75T 1375838 JANUARY 22 2007

O C C EMBLAZON 854E  
B C MATRIX 4132 1318818  
CAF PURE PRIDE EXT 99

D H D TRAVELER 6807  
DIXIE ERICA OF C H 1019  
N BAR EMULATION EXT  
GIBBET HILL PURE PRIDE CF 90

CARCASS	
MAR.	5.40
BF	15.76
REA	13.64
%LMY	53.73

ALBERDA TRAVELER 416  
BROOKMORE LADY JANE 137L 1067776  
BROOKMORE LADY JANE 56A

D H D TRAVELER 6807  
ALBERDA QUEEN KIMBERLY 222  
PYRAMID BACK STREET 6W  
BROOKMORE LADY JANE 68W

ACTUAL BW	ADJ. 205	ADJ. 365	EPDS				MILK	MAT.	DAM'S AGE
			BW	WW	YW				
92	702	1352	3.7 38%	47 32%	86 23%	18 17%	42	6	



LOT 116 - BROOKMORE GRAND DESIGN 231T



LOT 115 - BROOKMORE MATRIX 75T

**116**

## BROOKMORE ANGUS BROOKMORE GRAND DESIGN 231T

MALE JVJ 231T 1375997 FEBRUARY 20 2007

BON VIEW NEW DESIGN 1407  
BUSHS GRAND DESIGN 1112697  
BUSHS LADY DIVIDEND 872

B/R NEW DESIGN 036  
BON VIEW PRIDE 664  
TC DIVIDEND 963  
B A 714 LADY 619

CARCASS	
MAR.	4.45
BF	9.54
REA	13.58
%LMY	60.03

S A F 598 BANDO 5175  
BROOKMORE MEMORA 185P 1212204  
BROOKMORE MEMORA 95L

BON VIEW BANDO 598  
S A F ROYAL LASS 1002  
MVF FULLBACK 100J  
BROOKMORE MEMORA 120G

ACTUAL BW	ADJ. 205	ADJ. 365	EPDS				MILK	MAT.	DAM'S AGE
			BW	WW	YW				
102	805	1539	6.4 38%	56 30%	91 26%	26 23%	54	3	

# CATTLEMAN'S CONNECTION ANGUS BULL SALE 2008



## GAMBLES HOT ROD

BW: +4.1 WW: +54 YW: +105 Milk: +26 TM: +53 YG: +50

1 SON SELLS

# 117

## MOUNTAIN VIEW FARMS LTD. MVF HOT ROD 155T

MALE ABA 155T 1419797 MARCH 13 2007

FAMOUS 7001  
GAMBLES HOT ROD 1302206  
CHAMPION HILL LADY 703

RITO 9FB3 OF 5H11 FULLBACK  
MVF TIBBIE 176G 900941  
MVF TIBBIE 14C

S A F FAME  
T K KAREN 1369  
LEACHMAN SAUGHATCHEE 3000C  
CHAMPION HILL LADY STONE 731

LEACHMAN FULLBACK  
RITA 5H11 OF 1B14 RITO 9J9  
GINGER HILL DUSTER 89  
MVF TIBBIE 20W

CARCASS	
MAR.	4.10
BF	5.24
REA	13.01
%LMY	63.96

ACTUAL BW	ADJ. 205	ADJ. 365	EPDS					DAM'S AGE
			BW	WW	YW	MILK	MAT.	
112	876	1416	I+5.0 5%	I+45 5%	I+82 5%	I+24 5%	I+46	10

- Big performance, capacity, and hair from a great cow family
- Dam is an embryo donor at MVF
- Maternal brothers sell as Lots 1, 2 & 3



LOT 117 - MVF HOT ROD 155T

# 118

## MOUNTAIN VIEW FARMS LTD. MVF RETAIL PRODUCT 15T

MALE ABA 15T 1419985 FEBRUARY 03 2007

G A R PRECISION 1680  
G A R RETAIL PRODUCT 1238634  
G A R EXT 4927

S A F STRATEGY 9015  
MVF HI LITE 77R 1290755  
MVF HI LITE 23N

TEHAMA BANDO 155  
9J9 G A R 856  
N BAR EMULATION EXT  
G A R TRAVELER 641  
S A F FOCUS OF E R  
S A F ROYAL QUEEN 5084  
VERMILION DATELINE 7078  
MVF HIGHLIGHT 69E

CARCASS	
MAR.	4.80
BF	7.62
REA	12.42
%LMY	61.06

ACTUAL BW	ADJ. 205	ADJ. 365	EPDS					DAM'S AGE
			BW	WW	YW	MILK	MAT.	
74	711	1369	I+2.6 5%	I+51 5%	I+95 5%	I+23 5%	I+48	2

- Low BW, big numbered son of GAR Retail Product
- The Retail Product 2 year old heifers are a real pretty picture at MVF

# 119

## MOUNTAIN VIEW FARMS LTD. MVF VRD DATELINE 170T

MALE ABA 170T 1419908 MARCH 18 2007

VERMILION DATELINE 7078  
MVF VRD DATELINE 13M 1101743  
MVF ZARA LISA 24F

GDAR SVF TRAVELER 234D  
MVF ROSEBUD 892N 1185703  
LENLOOK ROSEBUD 30G

CONNELLY DATELINE  
VERMILION BLACKBIRD 5044  
MINBURN LANCER 22D  
NORTHCOTE ZARA LISA  
TRAVELER 124 G D A R  
G D A R FOREVER LADY 718  
WHITSTONE FLY TRAVELER 3006  
LENLOOK ROSEBUD 6A

CARCASS	
MAR.	5.30
BF	5.24
REA	11.00
%LMY	62.33

ACTUAL BW	ADJ. 205	ADJ. 365	EPDS					DAM'S AGE
			BW	WW	YW	MILK	MAT.	
80	683	1200	I+3.9 5%	I+42 5%	I+74 5%	I+17 5%	I+38	4

# 120

## MOUNTAIN VIEW FARMS LTD. MVF WIDESPREAD 171T

MALE ABA 171T 1419886 MARCH 19 2007

WHITSTONE WIDESPREAD MB  
WESTERN WIDESPREAD 1L 1041526  
BDM BLUE LADY ERICA 126'95

GDAR SVF TRAVELER 234D  
MVF ELLEN 48N 1175137  
BOTANY ANGUS ELLEN 6G

N BAR EMULATION EXT  
M B RACHEL 2173  
CUDLOBE EXON 35C  
BAR DOUBLE M BLUE LADY ERICA 1  
TRAVELER 124 G D A R  
G D A R FOREVER LADY 718  
N BAR EMULATION EXT  
BOTANY ANGUS ELLEN 51C

CARCASS	
MAR.	3.80
BF	5.24
REA	12.87
%LMY	63.85

ACTUAL BW	ADJ. 205	ADJ. 365	EPDS					DAM'S AGE
			BW	WW	YW	MILK	MAT.	
89	793	1333	I+4.7 5%	I+48 5%	I+85 5%	I+17 5%	I+41	4

# 121

## MOUNTAIN VIEW FARMS LTD. MVF DATELINE 175T

MALE ABA 175T 1419870 MARCH 19 2007

VERMILION DATELINE 7078  
MVF VRD DATELINE 913P 1232661  
MVF LADY DI 60K

GDAR SVF TRAVELER 234D  
MVF ROSEBUD 72M 1101672  
LENLOOK ROSEBUD 2E

CONNELLY DATELINE  
VERMILION BLACKBIRD 5044  
MVBL LANCER 9F  
DOUBLE AA LADY DI 744'94  
TRAVELER 124 G D A R  
G D A R FOREVER LADY 718  
PINE DRIVE BIG SKY  
LENLOOK ROSEBUD 25C

CARCASS	
MAR.	4.60
BF	5.71
REA	12.02
%LMY	62.67

ACTUAL BW	ADJ. 205	ADJ. 365	EPDS					DAM'S AGE
			BW	WW	YW	MILK	MAT.	
87	712	1246	I+4.9 5%	I+42 5%	I+73 5%	I+14 5%	I+35	5

# CATTLEMAN'S CONNECTION ANGUS BULL SALE 2008



## MVF DATELINE 913P

**BW: +5.2 WW: +47 YW: +87 Milk: +16 TM: +40 YG: +40**

- Undefeated Champion
  - 2006 National Champion Bull at Farmfair in Edmonton
  - 2006 Agribition Grand Champion Angus Bull in Regina
- BW: 96 lbs. WW: 995 lbs. Nov. 1/04 Adj. 365D: 1,488 lbs.
- Current weight 2,626 lbs.
- Carcass - Mar: 6.00 BF: 7.62 REA: 13.98 %LMY: 62.32
- A bull that adds carcass quality, hair coat, thickness, depth and performance
- His first calves are outstanding

2 SONS SELL



LOT 122 - MVF DATELINE 349S

LOTS 122 - 139  
ARE LONG YEARLINGS FROM  
MVF'S FALL CALVING  
PROGRAM

## 122

MALE

MOUNTAIN VIEW FARMS LTD.  
MVF DATELINE 349S

ABA 349S 1365607 SEPTEMBER 19 2006

VERMILION DATELINE 7078  
MVF VRD DATELINE 913P 1232661  
MVF LADY DI 60K

CONNELLY DATELINE  
VERMILION BLACKBIRD 5044  
MVBL LANCER 9F  
DOUBLE AA LADY DI 744'94

V D A R LUCYS BOY  
BROOKMORE ALETA 10K 1001690  
BROOKMORE ALETA 54H

TRAVELER 1148 G D A R  
V D A R PINE DRIVE LUCY 5  
EBON HILL EXTRA GOLD 31'95  
BROOKMORE ALETA 63F

ACTUAL BW	ADJ. 205	ADJ. 365	EPDS					DAM'S AGE
			BW	WW	YW	MILK	MAT.	
87	725	1262	1+5.0 5%	1+42 5%	1+78 5%	1+14 5%	1+35	7

## 123

MALE

MOUNTAIN VIEW FARMS LTD.  
MVF DATELINE 365S

ABA 365S 1365606 SEPTEMBER 28 2006

VERMILION DATELINE 7078  
MVF VRD DATELINE 913P 1232661  
MVF LADY DI 60K

CONNELLY DATELINE  
VERMILION BLACKBIRD 5044  
MVBL LANCER 9F  
DOUBLE AA LADY DI 744'94

BROOKMORE EXTRA 145D  
HCA CRESENT TIBBIE BROOK 1038539  
CRESCENT CREEK TIBBIE 3A

EARLY SUNSET EXTRA 56B  
BROOKMORE TIBBIE 10B  
ACHIEVER 873Y OF J R S  
CRESCENT CREEK TIBBIE 10L

ACTUAL BW	ADJ. 205	ADJ. 365	EPDS					DAM'S AGE
			BW	WW	YW	MILK	MAT.	
87	710	1224	1+4.2 5%	1+39 5%	1+68 5%	1+14 5%	1+33	7



# JULY 13-16, 2009

## CALGARY, ALBERTA, CANADA

**PRE-FORUM  
TOUR  
JULY 8-12**



**POST-FORUM  
TOUR  
JULY 17-21**

Where the World Meets the West!

FOR DETAILS VISIT:

<http://forum.cdnangus.ca>

or contact: **THE CANADIAN ANGUS ASSOCIATION**  
142, 6715-8 St. NE Calgary, Alberta Canada T2E 7H7  
Phone: 403-571-3580 email: forum@cdnangus.ca

# CATTLEMAN'S CONNECTION ANGUS BULL SALE 2008



## MVF VRD DATELINE 13M

**BW: +3.9 WW: +42 YW: +77 Milk: +14 TM: +35 YG: +35**

- Co-owned with Circle 7 Angus and Soderglen Farms
- 13M's fluent movement, balanced EPDs, excellent ultrasound data and his ability to consistently produce bulls and females that are the right kind make him one of the leading Vermilion Dateline sons

2 SONS SELL



LOT 124 - MVF DATELINE 388S

# 124

MALE

MOUNTAIN VIEW FARMS LTD.  
MVF DATELINE 388S  
ABA 388S 1365602 OCTOBER 11 2006

VERMILION DATELINE 7078  
MVF VRD DATELINE 13M 1101743  
MVF ZARA LISA 24F

YOUNG DALE MONARCH 12E  
MVRB TIBBIE 25J 982446  
MVRB TIBBIE 77E

CONNEALY DATELINE  
VERMILION BLACKBIRD 5044  
MINBURN LANCER 22D  
NORTHCOTE ZARA LISA

DALRENE EXTRA 36A  
YOUNG DALE GRACE 16C  
MINERTS FORTUNE 2000  
MVF TIBBIE 48W

ACTUAL BW	ADJ. 205	ADJ. 365	EPDS					DAM'S AGE
			BW	WW	YW	MILK	MAT.	
95	707	1258	I+4.9 5%	I+40 5%	I+74 5%	I+10 5%	I+30	8

# 125

MALE

MOUNTAIN VIEW FARMS LTD.  
MVF DATELINE 392S  
ABA 392S 1365616 OCTOBER 14 2006

VERMILION DATELINE 7078  
MVF VRD DATELINE 13M 1101743  
MVF ZARA LISA 24F

MVF STOCKMAN 79K  
MVF DOLLY 231M 1128240  
DARLENE DOLLY OF N.B.A. 3K

CONNEALY DATELINE  
VERMILION BLACKBIRD 5044  
MINBURN LANCER 22D  
NORTHCOTE ZARA LISA

TC STOCKMAN 365  
RRD TIBBIE 12E  
MVBL ASSET 42H  
TAFIKA 75E DOLLY 67G

ACTUAL BW	ADJ. 205	ADJ. 365	EPDS					DAM'S AGE
			BW	WW	YW	MILK	MAT.	
86	689	1202	I+3.6 5%	I+38 5%	I+70 5%	I+12 5%	I+31	5

BE SURE TO JOIN US  
FOR LUNCH  
AT 11:30 AM



## MVF NEW FRONTIER 14N

**BW: +1.6 WW: +41 YW: +81 Milk: +18 TM: +39 YG: +40**

- 14N is a very well balanced, free moving bull with tremendous EPDs and performance.

2 SONS SELL

# CATTLEMAN'S CONNECTION ANGUS BULL SALE 2008



LOT 126 - MVF NEW FRONTIER 327S

## 126

MALE

MOUNTAIN VIEW FARMS LTD.  
**MVF NEW FRONTIER 327S**  
 ABA 327S 1369035 SEPTEMBER 17 2006

B/R NEW FRONTIER 095  
**MVF NEW FRONTIER 14N 1175099**  
 MVF TIBBIE 39E

B/R NEW DESIGN 036  
 WHITE FENCE PRIDE H1  
 MINERTS FORTUNE 2000  
 MVF TIBBIE 60C

MVF DATELINE 156L  
**MVF TIBBIE 124N 1229929**  
 MVF TIBBIE 030L

CONNELLY DATELINE  
 BROOKMORE MISS EVA 75J  
 ALBERDA TRAVELER 416  
 RRD TIBBIE 12E

ACTUAL BW	ADJ. 205	ADJ. 365	EPDS					DAM'S AGE
			BW	WW	YW	MILK	MAT.	
87	647	1172	I+2.1 5%	I+34 5%	I+67 5%	I+18 5%	I+35	4

## 127

MALE

MOUNTAIN VIEW FARMS LTD.  
**MVF NEW FRONTIER 397S**  
 ABA 397S 1368998 OCTOBER 18 2006

B/R NEW FRONTIER 095  
**MVF NEW FRONTIER 14N 1175099**  
 MVF TIBBIE 39E

B/R NEW DESIGN 036  
 WHITE FENCE PRIDE H1  
 MINERTS FORTUNE 2000  
 MVF TIBBIE 60C

GDAR SVF TRAVELER 234D  
**MVF BLACKBIRD 84M 1101799**  
 MVF BLACKBIRD 59H

TRAVELER 124 G D A R  
 G D A R FOREVER LADY 718  
 MVSB LIMITED EDITION 10E  
 SASKALTA BLACKBIRD 5 641F

ACTUAL BW	ADJ. 205	ADJ. 365	EPDS					DAM'S AGE
			BW	WW	YW	MILK	MAT.	
91	623	1179	I+3.0 5%	I+40 5%	I+70 5%	I+16 5%	I+35	5



LOT 127 - MVF NEW FRONTIER 397S



## MVF NEW FRONTIER 803N

**BW: +3.8 WW: +35 YW: +61 Milk: +17 TM: +35 YG: +26**

5 SONS SELL

## 128

MALE

MOUNTAIN VIEW FARMS LTD.  
**MVF NEW FRONTIER 313S**  
 ABA 313S 1365658 SEPTEMBER 10 2006

B/R NEW FRONTIER 095  
**MVF NEW FRONTIER 803N 1186745**  
 GREENBUSH TIBBIE 5H

B/R NEW DESIGN 036  
 WHITE FENCE PRIDE H1  
 MINBURN LANCER 22D  
 MVHF TIBBIE 37Z

O G L BATTLE CRY 427 128  
**MVF TIBBIE 8L 1066515**  
 MVF TIBBIE 52F

NICHOLS EUREKA W57  
 O G L DUSTY ROSE 128 902  
 BON VIEW EMULATION EXT 473  
 MVF TIBBIE 21D

ACTUAL BW	ADJ. 205	ADJ. 365	EPDS					DAM'S AGE
			BW	WW	YW	MILK	MAT.	
95	712	1247	I+3.8 5%	I+35 5%	I+68 5%	I+18 5%	I+35	6



LOT 128 - MVF NEW FRONTIER 313S

# CATTLEMAN'S CONNECTION ANGUS BULL SALE 2008

## 129

MOUNTAIN VIEW FARMS LTD.  
**MVF NEW FRONTIER 316S**  
 ABA 316S 1365661 SEPTEMBER 11 2006

B/R NEW FRONTIER 095  
**MVF NEW FRONTIER 803N 1186745**  
 GREENBUSH TIBBIE 5H

B/R NEW DESIGN 036  
 WHITE FENCE PRIDE H1  
 MINBURN LANCER 22D  
 MVHF TIBBIE 37Z

MCRAE'S FOCUS 33F  
**MVF MISS ESSENCE 197L 1056532**  
 MVKD MISS ESSENCE 11G

STEVENSON FORTUNE 425C  
 MCRAE'S BRITTANY 58Z  
 BON VIEW EMULATION EXT 473  
 JRM ALBERTA LASS 36B

ACTUAL BW	ADJ. 205	ADJ. 365	EPDS					DAM'S AGE
			BW	WW	YW	MILK	MAT.	
82	612	1158	I+2.5 5%	I+27 5%	I+45 5%	I+11 5%	I+24	6

## 130

MOUNTAIN VIEW FARMS LTD.  
**MVF NEW FRONTIER 355S**  
 ABA 355S 1365652 SEPTEMBER 25 2006

B/R NEW FRONTIER 095  
**MVF NEW FRONTIER 803N 1186745**  
 GREENBUSH TIBBIE 5H

B/R NEW DESIGN 036  
 WHITE FENCE PRIDE H1  
 MINBURN LANCER 22D  
 MVHF TIBBIE 37Z

DRYLAND RITO -953-  
**BXB DORITO 14L 1124112**  
 FREYBURN BEAUTY 50J

BENLOCK RITO 59F  
 DRYLAND LYRIC 611  
 YOUNG DALE MONSOON 8D  
 BAR 20 BEAUTY 443E

ACTUAL BW	ADJ. 205	ADJ. 365	EPDS					DAM'S AGE
			BW	WW	YW	MILK	MAT.	
90	587	1207	I+3.7 5%	I+35 5%	I+57 5%	I+15 5%	I+33	6

## 131

MOUNTAIN VIEW FARMS LTD.  
**MVF NEW FRONTIER 368S**  
 ABA 368S 1365650 OCTOBER 02 2006

B/R NEW FRONTIER 095  
**MVF NEW FRONTIER 803N 1186745**  
 GREENBUSH TIBBIE 5H

B/R NEW DESIGN 036  
 WHITE FENCE PRIDE H1  
 MINBURN LANCER 22D  
 MVHF TIBBIE 37Z

BAR J P TOUCHDOWN 6E  
**BXB SOFT TOUCH 38L 1124126**  
 HAPPYVALE NP LASSIE 17G

CENTURY TOUCHSTONE 131  
 PENOSKY BLOSSOM 28U  
 N BAR EMULATION EXT  
 HAPPYVALE LASSIE 8D

ACTUAL BW	ADJ. 205	ADJ. 365	EPDS					DAM'S AGE
			BW	WW	YW	MILK	MAT.	
90	597	1179	I+3.0 5%	I+33 5%	I+58 5%	I+14 5%	I+31	6



LOT 134 - MVF FOCUS 319S

## 132

MOUNTAIN VIEW FARMS LTD.  
**MVF NEW FRONTIER 374S**  
 ABA 374S 1365641 OCTOBER 04 2006

B/R NEW FRONTIER 095  
**MVF NEW FRONTIER 803N 1186745**  
 GREENBUSH TIBBIE 5H

B/R NEW DESIGN 036  
 WHITE FENCE PRIDE H1  
 MINBURN LANCER 22D  
 MVHF TIBBIE 37Z

HDAF CAVALIER 15H  
**CAYMEN BLUEBLOOD 8'01 1046010**  
 KLUZAK BLUE BLOOD 13H

O G L BATTLE CRY 427 128  
 LOMA LANES BLACKBIRD 24A  
 TC STOCKMAN 365  
 ANKONY BLUE BLOOD T448

ACTUAL BW	ADJ. 205	ADJ. 365	EPDS					DAM'S AGE
			BW	WW	YW	MILK	MAT.	
77	638	1202	I+3.8 5%	I+36 5%	I+64 5%	I+17 5%	I+35	6



S A F FOCUS OF E R - SIRE OF MVF FOCUS 2P

## 133

MOUNTAIN VIEW FARMS LTD.  
**MVF FOCUS 314S**  
 ABA 314S 1365659 SEPTEMBER 11 2006

S A F FOCUS OF E R  
**MVF FOCUS 2P 1232552**  
 MVF BARANDA 2K

S A F FAME  
 G D A R FOREVER LADY 246  
 MVF SIRLOIN 18H  
 CRESCENT CREEK BARANDA 7H

MVF STOCKMAN 79K  
**MVF TIBBIE 202N 1175098**  
 MVRB TIBBIE 37E

TC STOCKMAN 365  
 RRD TIBBIE 12E  
 G D A R EXECUTIVE 727  
 MVF TIBBIE 48W

ACTUAL BW	ADJ. 205	ADJ. 365	EPDS					DAM'S AGE
			BW	WW	YW	MILK	MAT.	
78	678	1265	I+1.5 5%	I+37 5%	I+66 5%	I+16 5%	I+34	4

## 134

MOUNTAIN VIEW FARMS LTD.  
**MVF FOCUS 319S**  
 ABA 319S 1365633 SEPTEMBER 12 2006

S A F FOCUS OF E R  
**MVF FOCUS 2P 1232552**  
 MVF BARANDA 2K

S A F FAME  
 G D A R FOREVER LADY 246  
 MVF SIRLOIN 18H  
 CRESCENT CREEK BARANDA 7H

WESTERN WIDESPREAD 1L  
**MVF TIBBIE 271P 1222409**  
 BXB FIRST DATE 208L

WHITESTONE WIDESPREAD MB  
 BDM BLUE LADY ERICA 126'95  
 CONNEALY DATELINE  
 BXB MISS ROYCE 205J

ACTUAL BW	ADJ. 205	ADJ. 365	EPDS					DAM'S AGE
			BW	WW	YW	MILK	MAT.	
78	695	1226	I+4.2 5%	I+47 5%	I+81 5%	I+16 5%	I+39	3

# CATTLEMAN'S CONNECTION ANGUS BULL SALE 2008

## 135

MOUNTAIN VIEW FARMS LTD.  
**MVF FOCUS 351S**

MALE ABA 351S 1365622 SEPTEMBER 20 2006

S A F FOCUS OF E R  
**MVF FOCUS 2P 1232552**  
 MVF BARANDA 2K

S A F FAME  
 G D A R FOREVER LADY 246  
 MVF SIRLOIN 18H  
 CRESCENT CREEK BARANDA 7H

MVF IMPROVEMENT 784L  
**MVF PEARL 156N 1183890**  
 ROY MAC PEARL 16C

NORTHERN IMPROVEMENT 4480 GF  
 RRD TIBBIE 12E  
 LOR WIN'S DUDE 8A  
 ROY MAC PEARL 10S

ACTUAL BW	ADJ. 205	ADJ. 365	EPDS					DAM'S AGE
			BW	WW	YW	MILK	MAT.	
80	568	1197	I+0.4 5%	I+28 5%	I+48 5%	I+13 5%	I+27	4



V F VENTURE FORWARD - SIRE OF BXB VENTURE SON 9P

## 136

MOUNTAIN VIEW FARMS LTD.  
**MVF FOCUS 398S**

MALE ABA 398S 1365643 OCTOBER 18 2006

S A F FOCUS OF E R  
**MVF FOCUS 2P 1232552**  
 MVF BARANDA 2K

S A F FAME  
 G D A R FOREVER LADY 246  
 MVF SIRLOIN 18H  
 CRESCENT CREEK BARANDA 7H

VERMILION DATELINE 7078  
**MVF GEORGINA 149P 1222320**  
 MVF GEORGINA 21J

CONNELLY DATELINE  
 VERMILION BLACKBIRD 5044  
 MVSB LIMITED EDITION 10E  
 MVF GEORGINA 62F

ACTUAL BW	ADJ. 205	ADJ. 365	EPDS					DAM'S AGE
			BW	WW	YW	MILK	MAT.	
81	607	1219	I+2.4 5%	I+44 5%	I+75 5%	I+13 5%	I+35	3

## 138

MOUNTAIN VIEW FARMS LTD.  
**MVF VENTURE 354S**

MALE ABA 354S 1365639 SEPTEMBER 24 2006

V F VENTURE FORWARD  
**BXB VENTURE SON 9P 1280124**  
 BXB DATELINE 50M

V D A R TRAVELER 722  
 LANDMARK FREDIA 911  
 VERMILION DATELINE 7078  
 MVF EVENING TINGE 70F

MVF HEADS UP 029M  
**MVF ANNIE K 284P 1222547**  
 MVF ANNIE K 234M

ANGUS ACRES HEADS UP 31D  
 MVF TIBBIE 10G  
 MVF FULLBACK 127J  
 REMINGTON'S ANNIE K 185D

ACTUAL BW	ADJ. 205	ADJ. 365	EPDS					DAM'S AGE
			BW	WW	YW	MILK	MAT.	
86	626	1194	I+2.8 5%	I+42 5%	I+75 5%	I+20 5%	I+41	3

## 137

MOUNTAIN VIEW FARMS LTD.  
**MVF FOCUS 502S**

MALE ABA 502S 1369024 OCTOBER 20 2006

S A F FOCUS OF E R  
**MVF FOCUS 2P 1232552**  
 MVF BARANDA 2K

S A F FAME  
 G D A R FOREVER LADY 246  
 MVF SIRLOIN 18H  
 CRESCENT CREEK BARANDA 7H

BON VIEW NEW DESIGN 878  
**MVF LADY FANNY 68N 1175427**  
 BXB MISS STOCK 299L

B/R NEW DESIGN 036  
 BON VIEW GAMMER 85  
 TC STOCKMAN 365  
 PAT LADY FANNY 285B

ACTUAL BW	ADJ. 205	ADJ. 365	EPDS					DAM'S AGE
			BW	WW	YW	MILK	MAT.	
70	638	1163	I+1.2 5%	I+37 5%	I+62 5%	I+17 5%	I+36	4

## 139

MOUNTAIN VIEW FARMS LTD.  
**MVF VENTURE 384S**

MALE ABA 384S 1365634 OCTOBER 10 2006

V F VENTURE FORWARD  
**BXB VENTURE SON 9P 1280124**  
 BXB DATELINE 50M

V D A R TRAVELER 722  
 LANDMARK FREDIA 911  
 VERMILION DATELINE 7078  
 MVF EVENING TINGE 70F

MVF CATTLEMENS CHOICE 6E  
**MVF BEAUTY 157P 1222203**  
 BEAUTY MCB 57'91

G D A R OSCAR 711  
 MVF TIBBIE 14C  
 CANADIAN BIG PROMISE D G  
 BEAUTY MCB 72'82

ACTUAL BW	ADJ. 205	ADJ. 365	EPDS					DAM'S AGE
			BW	WW	YW	MILK	MAT.	
71	578	1173	I+2.1 5%	I+32 5%	I+54 5%	I+17 5%	I+33	3

CALVING EASE BULLS  
 30% of the offering is  
 suitable for heifers

CAN'T MAKE THE SALE?  
 Remember - we're just  
 a phone call away

# CATTLEMAN'S CONNECTION ANGUS BULL SALE 2008

## SALE INDEX

LOT	TATTOO	LOT	TATTOO	LOT	TATTOO
1	ABA 966T	48	JVJ 138T	94	ABA 85T
2	ABA 974T	49	JVJ 139T	95	ABA 115T
3	ABA 963T	50	JVJ 144T	96	MVMM 116T
4	ABA 610T	51	JVJ 155T	97	JVJ 54T
5	ABA 614T	52	JVJ 157T	98	JVJ 74T
6	ABA 3T	53	JVJ 158T	99	JVJ 150T
7	ABA 62T	54	JVJ 160T	100	JVJ 154T
8	ABA 63T	55	JVJ 162T	101	JVJ 167T
9	ABA 64T	56	JVJ 191T	102	JVJ 180T
10	ABA 67T	57	JVJ 192T	103	JVJ 206T
11	ABA 81T	58	JVJ 195T	104	JVJ 221T
12	ABA 82T	59	JVJ 197T	105	ABA 601T
13	ABA 86T	60	JVJ 209T	106	ABA 77T
14	ABA 89T	61	JVJ 216T	107	ABA 131T
15	ABA 91T	62	JVJ 252T	108	ABA 143T
16	ABA 156T	63	ABA 6T	109	JVJ 255T
17	JVJ 4T	64	ABA 13T	110	JVJ 256T
18	JVJ 5T	65	JVJ 1T	111	JVJ 260T
19	JVJ 11T	66	JVJ 3T	112	JVJ 198T
20	JVJ 16T	67	JVJ 15T	113	JVJ 239T
21	JVJ 27T	68	JVJ 22T	114	JVJ 142T
22	JVJ 113T	69	JVJ 23T	115	JVJ 75T
23	JVJ 119T	70	JVJ 33T	116	JVJ 231T
24	JVJ 55T	71	JVJ 40T	117	ABA 155T
25	JVJ 78T	72	JVJ 171T	118	ABA 15T
26	JVJ 215T	73	JVJ 187T	119	ABA 170T
27	JVJ 227T	74	JVJ 229T	120	ABA 171T
28	JVJ 248T	75	ABA 24T	121	ABA 175T
29	JVJ 259T	76	ABA 48T	122	ABA 349S
30	ABA 5T	77	ABA 69T	123	ABA 365S
31	ABA 16T	78	ABA 87T	124	ABA 388S
32	ABA 39T	79	ABA 105T	125	ABA 392S
33	ABA 51T	80	JVJ 64T	126	ABA 327S
34	ABA 59T	81	JVJ 81T	127	ABA 397S
35	ABA 97T	82	JVJ 85T	128	ABA 313S
36	ABA 113T	83	JVJ 134T	129	ABA 316S
37	ABA 134T	84	JVJ 175T	130	ABA 355S
38	ABA 603T	85	JVJ 178T	131	ABA 368S
39	JVJ 38T	86	JVJ 199T	132	ABA 374S
40	JVJ 77T	87	ABA 10T	133	ABA 314S
41	JVJ 83T	88	ABA 14T	134	ABA 319S
42	JVJ 91T	89	ABA 28T	135	ABA 351S
43	JVJ 95T	90	ABA 47T	136	ABA 398S
44	JVJ 99T	91	ABA 53T	137	ABA 502S
45	JVJ 109T	92	ABA 66T	138	ABA 354S
46	JVJ 111T	93	ABA 80T	139	ABA 384S
47	JVJ 126T				

## NOTES

### GENERAL INFORMATION

**CATTLE INSPECTION:** All carry permanent identity tags, corresponding to Sale Lot Numbers. All shall be available for inspection prior to sale.

**HEALTH STATUS:** The bulls offered for the sale have been vaccinated for IBR, PI-3, BRSV, 8 WAY BLACK LEG, HEAMOPHILUS, SOMNUS AND PASTEURELLA HAEMOLYTICA. All were treated for internal and external parasites.

**ALL CATTLE ARE SOLD:** Subject to such tests as required for export under regulations of the Health of Animals Branch, Department of Agriculture for Canada - those corresponding to Bureau of Animal Industry requirements.

**BREEDING GUARANTEE:** All cattle are sound and right, and all with a responsible breeder guarantee of satisfaction. In the event of any unlikely dispute, the regular terms and conditions, standard with the Canadian Aberdeen Angus Association shall apply.

**HOLDING AND SHIPMENTS:** Approximately one week is required for export transfers and other documents to be processed. Export animals will be held at no charge and under excellent care. Joint export shipping arrangements to attain minimum shipping cost will gladly be made by the sale management if instructions to that effect are provided to clerk of the sale when settlement is made.

**INTEREST:** The Cattleman's Connection Consignors reserve the right to retain an interest in any of the animals selling.

**INSURANCE:** Ownership risk to purchaser commences when the Auctioneer's hammer falls. Livestock coverage will be available at the Clerk's desk from the appointed representatives on sale day, also from the Sales Management at any time.

**TERMS OF SALE:** Are cash or cheque at par, payable to Clerks of the Sale on Sale Day. U.S. Funds will be accepted at the current rate of exchange. No release will be given until satisfactory settlement has been made. We reserve the right to withhold animals from export shipment for whom payments have not been received prior to departure times.

**ALL PERSONS** who attend the Sale do so at their own risk, and the Owners, Sale Management and Sale Staff assume no liability, legal or otherwise, for property loss or for any accidents that may occur.

## THANKYOU

for your interest in our programs

6th Annual  
**MOUNTAIN VIEW FARMS  
 SPRING BULL SALE**

April 18, 2008  
 Virden, Manitoba