

MVF



MOUNTAIN VIEW FARMS

7th Annual **SPRING BULL SALE**

FRIDAY • APRIL 17 • 2009 • 1 PM DST

HEARTLAND LIVESTOCK YARDS • VIRDEN • MANITOBA

SELLING: 80 RANGE-READY BLACK ANGUS BULLS

31 Long Yearlings (Born Sept.-Oct.) • 9 Two-Year-Olds • 40 Yearlings

ALL GUARANTEED BREEDERS

SALE DAY PHONE 204-748-2809

Please join us for a beef lunch courtesy of Mountain View Farms at 11:30 A.M.

- **WE STAND BEHIND WHAT WE SELL** - all bulls will be semen tested & breeding soundness evaluated
- **SIGHT UNSEEN PURCHASE PLAN** - your satisfaction guaranteed
- **POUNDS** - generations of bred on muscle, without sacrificing maternal traits
- **CALVING EASE** - 30% of the bulls selling are suitable for heifers

HOTEL RESERVATIONS:

Jays Inn & Suites, Virden - 204-748-2223

Countryside Inn Motel - 204-748-1244

AUCTIONEER: Brent Carey - 403-549-2478 Cell: 403-650-9028

RINGMEN: Ryan Dorrان - 403-226-2985 Cell: 403-507-6483

Dennis Ericson - 780-352-7630 Cell: 780-361-9347

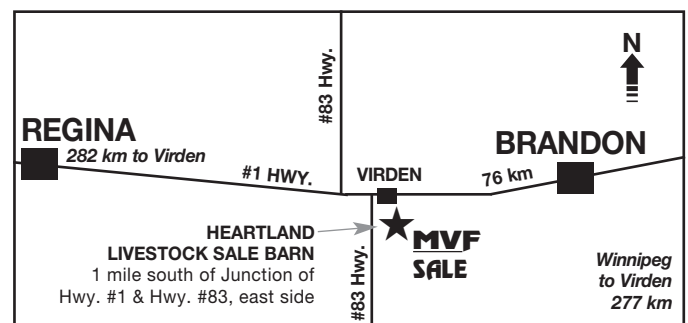
PHOTOGRAPHER:

Grant Rolston Photography
403-593-2217



MANAGEMENT CONSULTANT:

Douglas J. Henderson & Associates Ltd.



MOUNTAIN VIEW FARMS

– BREEDING REGISTERED ANGUS SINCE 1933 –

R.R. #2, SWAN RIVER, MANITOBA, CANADA R0L 1Z0

SCOTT & ORYCIA ANDERSON - BO & GLORIA WOHLERS

PHONE: 204-734-2503 SCOTT CELL: 204-734-8821 FAX: 204-734-5074

Website: www.mountainviewfarms.ca

Email: mtviewangus@xplornet.com

MVF**MOUNTAIN VIEW FARMS**

R.R. #2, Swan River, MB R0L 1Z0

Scott & Orycia Anderson**Bo & Gloria Wohlers****Phone: 204-734-2503****Scott Cell: 204-734-8821**Website: www.mountainviewfarms.caEmail: mtviewangus@xplornet.com

Mark, Scott, Aaron & Orycia

On behalf of myself, Orycia and Bo & Gloria we would like to welcome you to our 7th Annual Spring Bull Sale.

This year's sale will feature 31 long yearling and nine two year old bulls. Our customers who have purchased these long yearling bulls in the past are very pleased with the way these bulls handle themselves in the pasture. The yearling bulls selling are stout made walking beef factories. Many of the bulls selling would work well for breeding heifers.

The bulls you will appraise on April 17th will be deep bodied and thick quartered, good footed with the ability to add performance, thickness, hair and maternal strength to their progeny. These bulls have been managed in large groups with plenty of exercise and fed a TMR ration for a 3 pound per day gain. The bulls are not fat but in the proper condition to get out there and cover a lot of ground and won't have a big meltdown. These bulls are ready to go to work and are backed by Mountain View's promise of 100% satisfaction for soundness and fertility.

If you are looking for bulls to add thickness, easy fleshing, more milk and lots of hair come to the sale on April 17th you won't be disappointed. Feel free to join us for lunch and refreshments at 11:30 on sale day. For more information please feel free to call me at (204) 734-8821 or any of our capable sales staff.

*Yours truly,
Mountain View Farms*

Scott Anderson

SPECIAL OFFERS TO BUYERS**TRUCKING**

We will deliver bulls at cost to central stockyard locations in Canada. Mountain View Farms will be more than willing to assist you in getting your bull delivered in a timely fashion and as affordable as possible.

SIGHT UNSEEN PURCHASE PLAN

If you are unable to attend sale day, you may call or send bids to Mountain View Farms or any member of the sales management team. Those who are interested in this plan are urged to contact MVF or the sales management to discuss your bull requirements and determine a budget.

Every effort will be made to buy you the right bull or bulls, at the right price to make you a repeat customer. If for any reason you are not satisfied with any of the cattle you purchased on order, you are under no obligation to accept them.

**SIGHT
UNSEEN
PURCHASE
PLAN****MOUNTAIN VIEW FARMS BULL WARRANTY**

Mountain View Farms guarantees to sell you a bull that is structurally sound, a bull that has passed a semen test and a breeding soundness evaluation by a licensed veterinarian. Should any MVF bull fail to be a satisfactory breeder - unable to physically service a cow or heifer - he will be replaced with a bull of equal value. Should this not be possible, an adjustment will be made to reflect the value of the bull in question, or a credit will be given towards the purchase of another bull.

IN SHORT, WE GUARANTEE TO PROVIDE YOU WITH A SOUND, BREEDING BULL.

We, however, will not provide replacement or adjustment for physical injury or mismanagement. Bearing this in mind, we stress the importance of insurance on your bull. At no time shall the seller's liability exceed the purchase price of the bull. Should you have a problem with your bull, call us right away. We will work with you to make sure you are satisfied with your Mountain View Farms bull.



Mountain View Farms Ltd. uses Canadian Angus Performance Program whole herd reporting.



MVF
Long Yearlings

901

MVF DATELINE 305T

MALE ABA 305T 1424909 SEPTEMBER 08 2007

VERMILION DATELINE 7078
MVF VRD DATELINE 34P 1222377
MVF TIBBIE 012L

CONNEALY DATELINE
VERMILION BLACKBIRD 5044
TC STOCKMAN 365
MVF TIBBIE 52F

MVF IMPROVEMENT 784L
MVF PEARL 156N 1183890
ROY MAC PEARL 16C

NORTHERN IMPROVEMENT 4480 GF
RRD TIBBIE 12E
LOR WIN'S DUDE 8A
ROY MAC PEARL 10S

ACT. BW	WW 5/1/08	ACT. W 3/3/09	EPDS					DAM'S AGE
			BW	WW	YW	MILK	TM	
79	712	1390	I+3.2 5%	I+35 5%	I+66 5%	I+15 5%	I+33	4



LOT 901 - MVF DATELINE 305T

902

MVF BLACKBIRD 331T

MALE ABA 331T 1424915 SEPTEMBER 21 2007

VERMILION DATELINE 7078
MVF VRD DATELINE 34P 1222377
MVF TIBBIE 012L

CONNEALY DATELINE
VERMILION BLACKBIRD 5044
TC STOCKMAN 365
MVF TIBBIE 52F

MVF STOCKMAN 79K
MVF BLACKBIRD 286N 1184024
EBON HILL BLACKBIRD 478'99

TC STOCKMAN 365
RRD TIBBIE 12E
EBON HILL FORTUNE 120'97
EBON HILL BLACKBIRD 478'95

ACT. BW	WW 5/1/08	ACT. W 3/3/09	EPDS					DAM'S AGE
			BW	WW	YW	MILK	TM	
81	737	1552	I+4.0 5%	I+44 5%	I+83 5%	I+15 5%	I+37	4

903

MVF DATELINE 334T

MALE ABA 334T 1424931 SEPTEMBER 22 2007

VERMILION DATELINE 7078
MVF VRD DATELINE 34P 1222377
MVF TIBBIE 012L

CONNEALY DATELINE
VERMILION BLACKBIRD 5044
TC STOCKMAN 365
MVF TIBBIE 52F

WESTERN WIDESPREAD 1L
MVF TIBBIE 308P 1270560
MVF TIBBIE 029L

WHITESTONE WIDESPREAD MB
BDM BLUE LADY ERICA 126'95
ALBERDA TRAVELER 416
RRD TIBBIE 12E

ACT. BW	WW 5/1/08	ACT. W 3/3/09	EPDS					DAM'S AGE
			BW	WW	YW	MILK	TM	
83	693	1392	I+5.2 5%	I+49 5%	I+90 5%	I+19 5%	I+44	3

LOT 902
MVF DATELINE 331T



Vermillion Dateline - Sire of MVF VRD Dateline 34P

MVF VRD DATELINE 34P

BW: +4.7 WW: +54 YW: +100 Milk: +22 TM: +49 YG: +46



CURRENT WEIGHTS
AVAILABLE SALE DAY

**LOT 904
MVF DATELINE 337T**



**LOT 905
MVF DATELINE 344T**

904

MVF DATELINE 337T

MALE ABA 337T 1424922 SEPTEMBER 23 2007

VERMILION DATELINE 7078
MVF VRD DATELINE 34P 1222377
MVF TIBBIE 012L

CONNELLY DATELINE
VERMILION BLACKBIRD 5044
TC STOCKMAN 365
MVF TIBBIE 52F

WESTERN WIDESPREAD 1L
MVF PRIDE 194P 1222273
HENDERSON PRIDE 30'97

WHITESTONE WIDESPREAD MB
BDM BLUE LADY ERICA 126'95
HFI AUGUSTAS
HENDERSON DESTINE PRIDE 31'93

ACT. BW	WW 5/1/08	ACT. W 3/3/09	EPDS					DAM'S AGE
			BW	WW	YW	MILK	TM	
81	720	1598	I+5.0 5%	I+49 5%	I+87 5%	I+18 5%	I+42	3

905

MVF DATELINE 344T

MALE ABA 344T 1424926 SEPTEMBER 24 2007

VERMILION DATELINE 7078
MVF VRD DATELINE 34P 1222377
MVF TIBBIE 012L

CONNELLY DATELINE
VERMILION BLACKBIRD 5044
TC STOCKMAN 365
MVF TIBBIE 52F

WESTERN WIDESPREAD 1L
MVF LASSIE 274P 1222387
BxB SOFT TOUCH 38L

WHITESTONE WIDESPREAD MB
BDM BLUE LADY ERICA 126'95
BAR J P TOUCHDOWN 6E
HAPPYVALE NP LASSIE 17G

ACT. BW	WW 5/1/08	ACT. W 3/3/09	EPDS					DAM'S AGE
			BW	WW	YW	MILK	TM	
90	724	1590	I+4.3 5%	I+48 5%	I+86 5%	I+18 5%	I+42	3

906

MVF DATELINE 347T

MALE ABA 347T 1424918 SEPTEMBER 25 2007

VERMILION DATELINE 7078
MVF VRD DATELINE 34P 1222377
MVF TIBBIE 012L

CONNELLY DATELINE
VERMILION BLACKBIRD 5044
TC STOCKMAN 365
MVF TIBBIE 52F

S A F 598 BANDO 5175
MVF TIBBIE 009P 1243533
MVF TIBBIE 68K

BON VIEW BANDO 598
S A F ROYAL LASS 1002
ANGUS ACRES BANDY 96X
MVF TIBBIE 5E

ACT. BW	WW 5/1/08	ACT. W 3/3/09	EPDS					DAM'S AGE
			BW	WW	YW	MILK	TM	
83	707	1592	N/A					3



**WE WILL ASSIST WITH
TRUCKING ARRANGEMENTS**

**MVF will deliver bulls at cost to
central stockyard locations in Canada**

907

MVF DATELINE 360T

MALE ABA 360T 1424925 SEPTEMBER 30 2007

VERMILION DATELINE 7078
MVF VRD DATELINE 34P 1222377
 MVF TIBBIE 012L

CONNELLY DATELINE
 VERMILION BLACKBIRD 5044
 TC STOCKMAN 365
 MVF TIBBIE 52F

WESTERN WIDESPREAD 1L
MVF TIBBIE 271P 1222409
 BXB FIRST DATE 208L

WHITSTONE WIDESPREAD MB
 BDM BLUE LADY ERICA 126'95
 CONNELLY DATELINE
 BXB MISS ROYCE 205J

ACT. BW	WW 5/1/08	ACT. W 3/3/09	EPDS					DAM'S AGE
			BW	WW	YW	MILK	TM	
88	752	1562	I+6.9 5%	I+52 5%	I+94 5%	I+19 5%	I+44	3

908

MVF DATELINE 380T

MALE ABA 380T 1424921 OCTOBER 09 2007

VERMILION DATELINE 7078
MVF VRD DATELINE 34P 1222377
 MVF TIBBIE 012L

CONNELLY DATELINE
 VERMILION BLACKBIRD 5044
 TC STOCKMAN 365
 MVF TIBBIE 52F

MVF STOCKMAN 79K
MVF NEONIA 189P 1222295
 MVF NEONIA 50H

TC STOCKMAN 365
 RRD TIBBIE 12E
 MINERTS FORTUNE 2000
 HAPPYVALE JRP NEONIA 85E

ACT. BW	WW 5/1/08	ACT. W 3/3/09	EPDS					DAM'S AGE
			BW	WW	YW	MILK	TM	
83	694	1374	I+4.7 5%	I+44 5%	I+81 5%	I+18 5%	I+39	3



**LOT 907
 MVF DATELINE 360T**

909

MVF DATELINE 392T

MALE ABA 392T 1424920 OCTOBER 22 2007

VERMILION DATELINE 7078
MVF VRD DATELINE 34P 1222377
 MVF TIBBIE 012L

CONNELLY DATELINE
 VERMILION BLACKBIRD 5044
 TC STOCKMAN 365
 MVF TIBBIE 52F

VERMILION DATELINE 7078
MVF GEORGINA 149P 1222320
 MVF GEORGINA 21J

CONNELLY DATELINE
 VERMILION BLACKBIRD 5044
 MVSB LIMITED EDITION 10E
 MVF GEORGINA 62F

ACT. BW	WW 5/1/08	ACT. W 3/3/09	EPDS					DAM'S AGE
			BW	WW	YW	MILK	TM	
85	682	1450	I+5.0 5%	I+50 5%	I+90 5%	I+16 5%	I+40	3

910

MVF DATELINE 396T

MALE ABA 396T 1424929 OCTOBER 23 2007

VERMILION DATELINE 7078
MVF VRD DATELINE 34P 1222377
 MVF TIBBIE 012L

CONNELLY DATELINE
 VERMILION BLACKBIRD 5044
 TC STOCKMAN 365
 MVF TIBBIE 52F

MVF EQUATOR 027M
MVF ELLEN ERICA 293P 1222360
 MVF ELLEN ERICA 73K

PAPA EQUATOR 2928
 MVF TIBBIE 10G
 TC STOCKMAN 365
 ELLEN ERICA E9

ACT. BW	WW 5/1/08	ACT. W 3/3/09	EPDS					DAM'S AGE
			BW	WW	YW	MILK	TM	
87	652	1352	I+4.1 5%	I+46 5%	I+85 5%	I+20 5%	I+43	3



**LOT 906
 MVF DATELINE 347T**



LOT 911
MVF NEW FRONTIER 315T

911

MVF NEW FRONTIER 315T

MALE ABA 315T 1424937 SEPTEMBER 13 2007

B/R NEW FRONTIER 095
MVF NEW FRONTIER 803N 1186745
GREENBUSH TIBBIE 5H

B/R NEW DESIGN 036
WHITE FENCE PRIDE H1
MINBURN LANCER 22D
MVHF TIBBIE 37Z

VERMILION DATELINE 7078
MVF TIBBIE 60M 1114706
MVHF TIBBIE 39B

CONNELLY DATELINE
VERMILION BLACKBIRD 5044
V D A R NEW TREND 315
MVHF TIBBIE 31Z

ACT. BW	WW 5/1/08	ACT. W 3/3/09	EPDS					DAM'S AGE
			BW	WW	YW	MILK	TM	
86	917	1786	I+4.5 5%	I+47 5%	I+81 5%	I+19 5%	I+42	5



MVF NEW FRONTIER 803N

BW: +2.5 WW: +44 YW: +71 Milk: +19 TM: +41 YG: +27

912

MVF NEW FRONTIER 359T

MALE ABA 359T 1424953 SEPTEMBER 29 2007

B/R NEW FRONTIER 095
MVF NEW FRONTIER 803N 1186745
GREENBUSH TIBBIE 5H

B/R NEW DESIGN 036
WHITE FENCE PRIDE H1
MINBURN LANCER 22D
MVHF TIBBIE 37Z

TC STOCKMAN 365
MVF TIBBIE 012L 1056359
MVF TIBBIE 52F

TC STOCKMAN
TC PRIDE 0014
BON VIEW EMULATION EXT 473
MVF TIBBIE 21D

ACT. BW	WW 5/1/08	ACT. W 3/3/09	EPDS					DAM'S AGE
			BW	WW	YW	MILK	TM	
89	823	1494	I+2.6 5%	I+42 5%	I+74 5%	I+22 5%	I+43	6

913

MVF NEW FRONTIER 364T

MALE ABA 364T 1424954 OCTOBER 02 2007

B/R NEW FRONTIER 095
MVF NEW FRONTIER 803N 1186745
GREENBUSH TIBBIE 5H

B/R NEW DESIGN 036
WHITE FENCE PRIDE H1
MINBURN LANCER 22D
MVHF TIBBIE 37Z

MVFA OBVIOUS TREND 17F
LLB EXCITING ERICA 238J 993388
DOUBLE J ERICA 551A

CH 054 RITO 0100
EARLY SUNSET LADY ANN 61D
CRACKERJACK MOUNTAIN 408
DOUBLE J ERICA 256Y

ACT. BW	WW 5/1/08	ACT. W 3/3/09	EPDS					DAM'S AGE
			BW	WW	YW	MILK	TM	
70	697	1398	I+2.4 5%	I+33 5%	I+57 5%	I+16 5%	I+33	8

914

MVF NEW FRONTIER 323T

MALE ABA 323T 1424919 SEPTEMBER 18 2007

B/R NEW FRONTIER 095
MVF FRONTIER 25P 1232673
MVF FAVORITE 58L

B/R NEW DESIGN 036
WHITE FENCE PRIDE H1
TC STOCKMAN 365
CAN AM FAVORITE 12G

F A R KRUGERRAND 410H
MVF TIBBIE 90P 1222544
MVF TIBBIE 220M

KRUGERRAND OF DONAMERE 490
F A R ERIANNA 286F
DESSA TRAVELER 4E
MVF TIBBIE 112H

ACT. BW	WW 5/1/08	ACT. W 3/3/09	EPDS					DAM'S AGE
			BW	WW	YW	MILK	TM	
82	926	1516	I+3.3 5%	I+40 5%	I+80 5%	I+15 5%	I+35	3



**REMEMBER OUR SIGHT
UNSEEN PURCHASE PLAN!**
Call to discuss your bull requirements
Your satisfaction is guaranteed

915

MVF NEW FRONTIER 348T

MALE ABA 348T 1424900 SEPTEMBER 26 2007

B/R NEW FRONTIER 095
MVF FRONTIER 25P 1232673
 MVF FAVORITE 58L

B/R NEW DESIGN 036
 WHITE FENCE PRIDE H1
 TC STOCKMAN 365
 CAN AM FAVORITE 12G

EBON HILL BLACK POWER 41'99
CAYMEN RUBY 16'02 1130523
 CAYMEN RUBY 23'00

BELVIN BLACK MAGIC 42'92
 ISLA BANK PRIME BEAUTY 7E
 S A F FOCUS OF E R
 CAYMEN RUBY 10'98

ACT. BW	WW 5/1/08	ACT. W 3/3/09	EPDS					DAM'S AGE
			BW	WW	YW	MILK	TM	
80	726	1520	+3.6 5%	+41 5%	+82 5%	+17 5%	+38	5



LOT 915 - MVF NEW FRONTIER 348T

916

MVF NEW FRONTIER 358T

MALE ABA 358T 1424951 SEPTEMBER 29 2007

B/R NEW FRONTIER 095
MVF FRONTIER 25P 1232673
 MVF FAVORITE 58L

B/R NEW DESIGN 036
 WHITE FENCE PRIDE H1
 TC STOCKMAN 365
 CAN AM FAVORITE 12G

G A R GRID MAKER
MVF FAVORITE 15R 1290734
 MVF FAVORITE 98M

G D A R TRAVELER 044
 G A R PRECISION 2536
 BON VIEW NEW DESIGN 878
 MADSENS FAVORITE 16K

ACT. BW	WW 5/1/08	ACT. W 3/3/09	EPDS					DAM'S AGE
			BW	WW	YW	MILK	TM	
78	785	1512	+3.8 5%	+46 5%	+86 5%	+19 5%	+42	2



LOT 916 - MVF NEW FRONTIER 358T

917

MVF NEW FRONTIER 375T

MALE ABA 375T 1424896 OCTOBER 07 2007

B/R NEW FRONTIER 095
MVF FRONTIER 25P 1232673
 MVF FAVORITE 58L

B/R NEW DESIGN 036
 WHITE FENCE PRIDE H1
 TC STOCKMAN 365
 CAN AM FAVORITE 12G

GAR COMMITMENT
MVF TIBBIE 66L 1066456
 RRD TIBBIE 12E

D H D TRAVELER 6807
 G A R BANDO 102
 RITO 2100 G D A R
 MVF TIBBIE 16C

ACT. BW	WW 5/1/08	ACT. W 3/3/09	EPDS					DAM'S AGE
			BW	WW	YW	MILK	TM	
80	747	1568	+3.2 5%	+34 5%	+69 5%	+16 5%	+33	6



LOT 917 - MVF NEW FRONTIER 375T

918

MVF NEW FRONTIER 387T

MALE ABA 387T 1424871 OCTOBER 20 2007

B/R NEW FRONTIER 095
MVF FRONTIER 25P 1232673
 MVF FAVORITE 58L

B/R NEW DESIGN 036
 WHITE FENCE PRIDE H1
 TC STOCKMAN 365
 CAN AM FAVORITE 12G

MVSB LIMITED EDITION 10E
MVF EILEEN 71G 894059
 EARLY SUNSET EILEEN 66U

DALRENE EXTRA 36A
 SANDY BAR ANNIE K 16C
 SUN UP MEGAFORCE
 LAMOYLE LAURA EILEEN 2J

ACT. BW	WW 5/1/08	ACT. W 3/3/09	EPDS					DAM'S AGE
			BW	WW	YW	MILK	TM	
80	614	1306	+4.0 5%	+30 5%	+58 5%	+10 5%	+25	10



MVF NEW FRONTIER 25P

BW: +3.1 WW: +37 YW: +77 Milk: +19 TM: +38 YG: +39

**LOT 920
MVF WIDESPREAD 327T**



**LOT 921
MVF WIDESPREAD 332T**

919 **MVF WIDESPREAD 325T**
MALE ABA 325T 1424869 SEPTEMBER 19 2007

WHITESTONE WIDESPREAD MB
WESTERN WIDESPREAD 1L 1041526
BDM BLUE LADY ERICA 126'95

MVSB LIMITED EDITION 10E
MVF MINNIE 60G 894062
HEATHERBROOK MINNIE 14'90

N BAR EMULATION EXT
M B RACHEL 2173
CUDLOBE EXON 35C
BAR DOUBLE M BLUE LADY ERICA 1

DALRENE EXTRA 36A
SANDY BAR ANNIE K 16C
RITO 2100 G D A R
HEATHERBROOK MINNIE 3'88

ACT. BW	WW 5/1/08	ACT. W 3/3/09	EPDS					DAM'S AGE
			BW	WW	YW	MILK	TM	
87	756	1326	I+5.1 5%	I+41 5%	I+68 5%	I+9 5%	I+29	10

920 **MVF WIDESPREAD 327T**
MALE ABA 327T 1424942 SEPTEMBER 20 2007

WHITESTONE WIDESPREAD MB
WESTERN WIDESPREAD 1L 1041526
BDM BLUE LADY ERICA 126'95

HDAF CAVALIER 15H
CAYMEN BLUEBLOOD 8'01 1046010
KLUZAK BLUE BLOOD 13H

N BAR EMULATION EXT
M B RACHEL 2173
CUDLOBE EXON 35C
BAR DOUBLE M BLUE LADY ERICA 1

O G L BATTLE CRY 427 128
LOMA LANES BLACKBIRD 24A
TC STOCKMAN 365
ANKONY BLUE BLOOD T448

ACT. BW	WW 5/1/08	ACT. W 3/3/09	EPDS					DAM'S AGE
			BW	WW	YW	MILK	TM	
85	798	1538	I+4.8 5%	I+46 5%	I+81 5%	I+17 5%	I+40	6

921 **MVF WIDESPREAD 332T**
MALE ABA 332T 1424880 SEPTEMBER 21 2007

WHITESTONE WIDESPREAD MB
WESTERN WIDESPREAD 1L 1041526
BDM BLUE LADY ERICA 126'95

RITO 9FB3 OF 5H11 FULLBACK
MVF TIBBIE 132J 983691
MVF TIBBIE 14C

N BAR EMULATION EXT
M B RACHEL 2173
CUDLOBE EXON 35C
BAR DOUBLE M BLUE LADY ERICA 1

LEACHMAN FULLBACK
RITA 5H11 OF 1B14 RITO 9J9
GINGER HILL DUSTER 89
MVF TIBBIE 20W

ACT. BW	WW 5/1/08	ACT. W 3/3/09	EPDS					DAM'S AGE
			BW	WW	YW	MILK	TM	
91	842	1600	I+5.7 5%	I+48 5%	I+83 5%	I+23 5%	I+46	8

922 **MVF WIDESPREAD 350T**
MALE ABA 350T 1424894 SEPTEMBER 26 2007

WHITESTONE WIDESPREAD MB
WESTERN WIDESPREAD 1L 1041526
BDM BLUE LADY ERICA 126'95

G D A R OSCAR 711
MVF TIBBIE 024L 1066464
MVF TIBBIE 14C

N BAR EMULATION EXT
M B RACHEL 2173
CUDLOBE EXON 35C
BAR DOUBLE M BLUE LADY ERICA 1

BALDRIDGE OSCAR
L T FOREVER LADY 395 G D A R
GINGER HILL DUSTER 89
MVF TIBBIE 20W

ACT. BW	WW 5/1/08	ACT. W 3/3/09	EPDS					DAM'S AGE
			BW	WW	YW	MILK	TM	
81	802	1448	I+5.4 5%	I+44 5%	I+74 5%	I+15 5%	I+37	6

LOT 923
MVF WIDESPREAD 366T



923

MVF WIDESPREAD 366T

MALE ABA 366T 1424905 OCTOBER 03 2007

WHITESTONE WIDESPREAD MB
WESTERN WIDESPREAD 1L 1041526
BDM BLUE LADY ERICA 126'95

N BAR EMULATION EXT
M B RACHEL 2173
CUDLOBE EXON 35C
BAR DOUBLE M BLUE LADY ERICA 1

MVF STOCKMAN 79K
MVF DOLLY 231M 1128240
DARLENE DOLLY OF N.B.A. 3K

TC STOCKMAN 365
RRD TIBBIE 12E
MVBL ASSET 42H
TAFIKA 75E DOLLY 67G

ACT. BW	WW 5/1/08	ACT. W 3/3/09	EPDS					DAM'S AGE
			BW	WW	YW	MILK	TM	
86	724	1452	I+4.9 5%	I+44 5%	I+78 5%	I+13 5%	I+35	5

924

MVF WIDESPREAD 368T

MALE ABA 368T 1424867 OCTOBER 03 2007

WHITESTONE WIDESPREAD MB
WESTERN WIDESPREAD 1L 1041526
BDM BLUE LADY ERICA 126'95

N BAR EMULATION EXT
M B RACHEL 2173
CUDLOBE EXON 35C
BAR DOUBLE M BLUE LADY ERICA 1

SPRUCE VIEW ESSOTERIC 31A
SASKALTA BLACKBIRD 5 641F 852813
BLACKBIRD T OLE SASKALTA 154A

JRM ESSOTERIC 26X
SPRUCE VIEW JESTRESS 29L
DOUBLE AA BARDOLENE 11'86
BLACKBIRD OLE SASKALTA 66S

ACT. BW	WW 5/1/08	ACT. W 3/3/09	EPDS					DAM'S AGE
			BW	WW	YW	MILK	TM	
85	777	1356	I+4.9 5%	I+39 5%	I+69 5%	I+13 5%	I+32	11



BULLS WITH GENERATIONS OF BRED ON MUSCLE



WESTERN WIDESPREAD 1L

BW: +6.1 WW: +55 YW: +93 Milk: +17 TM: +45 YG: +38

- Co-owned with Western Angus, Hillspring, AB
- Widespread puts a very nice back leg and hip structure in his progeny along with excellent hair and strong tops
- Sired the top selling bull at the 2005 MVF Spring Bull Sale

925

MVF WIDESPREAD 369T

MALE ABA 369T 1424876 OCTOBER 04 2007

WHITESTONE WIDESPREAD MB
WESTERN WIDESPREAD 1L 1041526
BDM BLUE LADY ERICA 126'95

N BAR EMULATION EXT
M B RACHEL 2173
CUDLOBE EXON 35C
BAR DOUBLE M BLUE LADY ERICA 1

BROOKMORE EXTRA 145D
ERICA OF HCA 8J 991798
ELLEN ERICA HCA 3B

EARLY SUNSET EXTRA 56B
BROOKMORE TIBBIE 10B
BELMORAL STAR 4'88
ELLEN ERICA MCB 137'84

ACT. BW	WW 5/1/08	ACT. W 3/3/09	EPDS					DAM'S AGE
			BW	WW	YW	MILK	TM	
91	639	1398	I+4.9 5%	I+46 5%	I+77 5%	I+16 5%	I+39	8

926

MVF WIDESPREAD 378T

MALE ABA 378T 1424884 TWIN OCTOBER 09 2007

WHITESTONE WIDESPREAD MB
WESTERN WIDESPREAD 1L 1041526
BDM BLUE LADY ERICA 126'95

N BAR EMULATION EXT
M B RACHEL 2173
CUDLOBE EXON 35C
BAR DOUBLE M BLUE LADY ERICA 1

V D A R LUCYS BOY
BROOKMORE ALETA 10K 1001690
BROOKMORE ALETA 54H

TRAVELER 1148 G D A R
V D A R PINE DRIVE LUCY 5
EBON HILL EXTRA GOLD 31'95
BROOKMORE ALETA 63F

ACT. BW	WW 5/1/08	ACT. W 3/3/09	EPDS					DAM'S AGE
			BW	WW	YW	MILK	TM	
70	715	1528	I+5.6 5%	I+46 5%	I+82 5%	I+14 5%	I+37	7



LOT 928
MVF WIDESPREAD 391T

927

MVF WIDESPREAD 386T

MALE ABA 386T 1424898 OCTOBER 19 2007

WHITESTONE WIDESPREAD MB
WESTERN WIDESPREAD 1L 1041526
BDM BLUE LADY ERICA 126'95

N BAR EMULATION EXT
M B RACHEL 2173
CUDLOBE EXON 35C
BAR DOUBLE M BLUE LADY ERICA 1

ANGUS ACRES HEADS UP 31D
MVF TIBBIE 240L 1171104
MVF TIBBIE 10G

ANGUS ACRES HEADS UP 178A
ANGUS ACRES STARTELL 11S
BON VIEW EMULATION EXT 473
MVHF TIBBIE 39B

ACT. BW	WW 5/1/08	ACT. W 3/3/09	EPDS					DAM'S AGE
			BW	WW	YW	MILK	TM	
87	715	1482	I+5.6 5%	I+47 5%	I+82 5%	I+13 5%	I+37	6

929

MVF WIDESPREAD 351T

MALE ABA 351T 1424948 SEPTEMBER 27 2007

WESTERN WIDESPREAD 1L
MVF WIDESPREAD 273P 1222332
MVF ELLEN 111J

WHITESTONE WIDESPREAD MB
BDM BLUE LADY ERICA 126'95
MVMM WESTERN RITO 47F
BOTANY ANGUS ELLEN 14G

S A F STRATEGY 9015
MVF LADY DI 87R 1290388
DOUBLE AA LADY DI 744'94

S A F FOCUS OF E R
S A F ROYAL QUEEN 5084
ANGUS ACRES BANDY 96X
DOUBLE FOUR LADY DI 70X

ACT. BW	WW 5/1/08	ACT. W 3/3/09	EPDS					DAM'S AGE
			BW	WW	YW	MILK	TM	
81	698	1432	I+3.3 5%	I+51 5%	I+80 5%	I+16 5%	I+41	2

928

MVF WIDESPREAD 391T

MALE ABA 391T 1424904 OCTOBER 21 2007

WHITESTONE WIDESPREAD MB
WESTERN WIDESPREAD 1L 1041526
BDM BLUE LADY ERICA 126'95

N BAR EMULATION EXT
M B RACHEL 2173
CUDLOBE EXON 35C
BAR DOUBLE M BLUE LADY ERICA 1

MVF FULLBACK 127J
MVF TIBBIE 223M 1101835
MVF TIBBIE 192H

RITO 9FB3 OF 5H11 FULLBACK
MVF TIBBIE 14C
BROOKMORE LANCER 32F
RRD TIBBIE 12E

ACT. BW	WW 5/1/08	ACT. W 3/3/09	EPDS					DAM'S AGE
			BW	WW	YW	MILK	TM	
89	741	1472	I+4.8 5%	I+49 5%	I+83 5%	I+18 5%	I+42	5

930

MVF WIDESPREAD 357T

MALE ABA 357T 1424950 SEPTEMBER 29 2007

WESTERN WIDESPREAD 1L
MVF WIDESPREAD 273P 1222332
MVF ELLEN 111J

WHITESTONE WIDESPREAD MB
BDM BLUE LADY ERICA 126'95
MVMM WESTERN RITO 47F
BOTANY ANGUS ELLEN 14G

MVF UNIVERSE 107M
MVF HI LITE 20P 1222361
MVF HILITE 74K

G D A UNIVERSE 726G
MVF TIBBIE 84J
MVF STOCKMAN 122H
MVF HIGHLIGHT 69E

ACT. BW	WW 5/1/08	ACT. W 3/3/09	EPDS					DAM'S AGE
			BW	WW	YW	MILK	TM	
86	787	1622	I+4.2 5%	I+53 5%	I+86 5%	I+18 5%	I+44	3



MVF WIDESPREAD 273P

BW: +3.0 WW: +57 YW: +87 Milk: +17 TM: +46 YG: +30

931

MVF WIDESPREAD 372T

MALE ABA 372T 1424955 OCTOBER 04 2007

WESTERN WIDESPREAD 1L
MVF WIDESPREAD 273P 1222332
MVF ELLEN 111J

WHITESTONE WIDESPREAD MB
BDM BLUE LADY ERICA 126'95
MVMM WESTERN RITO 47F
BOTANY ANGUS ELLEN 14G

MVF VRD DATELINE 13M
MVF TIBBIE 222R 1301015
MVF TIBBIE 81K

VERMILION DATELINE 7078
MVF ZARA LISA 24F
TC STOCKMAN 365
MVF TIBBIE 179G

ACT. BW	WW 5/1/08	ACT. W 3/3/09	EPDS					DAM'S AGE
			BW	WW	YW	MILK	TM	
86	734	1406	I+4.4 5%	I+49 5%	I+83 5%	I+17 5%	I+41	2



MVF
2-Year-Olds



LOT 932
MVF DATELINE 199T

932

MVF DATELINE 199T

MALE ABA 199T 1419868 MARCH 23 2007

VERMILION DATELINE 7078
MVF VRD DATELINE 13M 1101743
MVF ZARA LISA 24F

CONNEALY DATELINE
VERMILION BLACKBIRD 5044
MINBURN LANCER 22D
NORTHCOTE ZARA LISA

LENLOOK TRAVELER 9G
LENLOOK HEROINE 36M 1111932
LENLOOK HEROINE 63J

WHITSTONE FLY TRAVELER 3006
LENLOOK EILEEN VIOLET 34B
BABA OSCAR 3E
LENLOOK HEROINE 68C

ACT. BW	ADJ. 205	ADJ. 365	EPDS					DAM'S AGE				
			BW	WW	YW	MILK	TM					
79	686	1302	+2.1	35%	+36	24%	+77	21%	+13	13%	+31	5

Wt. 3/3/09: 1970 lbs.

933

MVF VRD DATELINE 177T

MALE ABA 177T 1419903 MARCH 19 2007

VERMILION DATELINE 7078
MVF VRD DATELINE 13M 1101743
MVF ZARA LISA 24F

CONNEALY DATELINE
VERMILION BLACKBIRD 5044
MINBURN LANCER 22D
NORTHCOTE ZARA LISA

MVF STOCKMAN 005L
MVF MISS ESSENCE 253N 1175388
MVF MISS ESSENCE 197L

TC STOCKMAN 365
LENLOOK ROSEBUD 30G
MCRAE'S FOCUS 33F
MVKD MISS ESSENCE 11G

ACT. BW	ADJ. 205	ADJ. 365	EPDS					DAM'S AGE				
			BW	WW	YW	MILK	TM					
86	717	1249	+4.0	34%	+42	23%	+75	21%	+15	12%	+36	4

Wt. 3/3/09: 1820 lbs.



MVF VRD DATELINE 13M

BW: +3.6 WW: +46 YW: +94 Milk: +13 TM: +36 YG: +48

- Co-owned with Circle 7 Angus and Soderghen Farms
- 13M's fluent movement, balanced EPDs, excellent ultrasound data and his ability to consistently produce bulls and females that are the right kind make him one of the leading Vermilion Dateline sons



LOT 936 - MVF RETAIL PRODUCT 15T

934

MVF DATELINE 211T

MALE ABA 211T 1419978 MARCH 27 2007

VERMILION DATELINE 7078
MVF VRD DATELINE 913P 1232661
 MVF LADY DI 60K

CONNELLY DATELINE
 VERMILION BLACKBIRD 5044
 MVBL LANCER 9F
 DOUBLE AA LADY DI 744'94

REMITALL LEGIONAIRE 8L
REMITALL ENCHANTRESS 202P 1227259
 REMITALL ENCHANTRESS 310K

SITZ ALLIANCE 6595
 REMITALL NEONIA 42J
 REMITALL HANSEN 110H
 REMITALL ENCHANTRESS 52H

ACT. BW	ADJ. 205	ADJ. 365	EPDS					DAM'S AGE				
			BW	WW	YW	MILK	TM					
87	637	1183	+4.8	34%	+41	23%	+71	17%	+14	12%	+35	3

Wt. 3/3/09: 1836 lbs.



LOT 937 - MVF RETAIL PRODUCT 45T

935

MVF DATELINE 252T

MALE ABA 252T 1419844 APRIL 17 2007

VERMILION DATELINE 7078
MVF VRD DATELINE 913P 1232661
 MVF LADY DI 60K

CONNELLY DATELINE
 VERMILION BLACKBIRD 5044
 MVBL LANCER 9F
 DOUBLE AA LADY DI 744'94

G D A R OSCAR 711
MVF TIBBIE 023L 1066467
 MVF TIBBIE 14C

BALDRIDGE OSCAR
 L T FOREVER LADY 395 G D A R
 GINGER HILL DUSTER 89
 MVF TIBBIE 20W

ACT. BW	ADJ. 205	ADJ. 365	EPDS					DAM'S AGE				
			BW	WW	YW	MILK	TM					
83	732	1224	+3.9	33%	+44	24%	+72	17%	+19	13%	+41	6

Wt. 3/3/09: 1776 lbs.

936

MVF RETAIL PRODUCT 15T

MALE ABA 15T 1419985 FEBRUARY 03 2007

G A R PRECISION 1680
G A R RETAIL PRODUCT 1238634
 G A R EXT 4927

TEHAMA BANDO 155
 9J9 G A R 856
 N BAR EMULATION EXT
 G A R TRAVELER 641

S A F STRATEGY 9015
MVF HI LITE 77R 1290755
 MVF HI LITE 23N

S A F FOCUS OF E R
 S A F ROYAL QUEEN 5084
 VERMILION DATELINE 7078
 MVF HIGHLIGHT 69E

ACT. BW	ADJ. 205	ADJ. 365	EPDS					DAM'S AGE				
			BW	WW	YW	MILK	TM					
74	711	1369	+1.4	35%	+56	26%	+107	24%	+22	20%	+50	2

Wt. 3/3/09: 2090 lbs.



GAR RETAIL PRODUCT

BW: +2.6 WW: +47 YW: +94 Milk: +25 TM: +49 YG: +47

- A calving ease bull that inputs positive growth and super carcass merit into his calves
- His daughters are turning heads – they are attractive, big middled cows with exceptional udder design.

937

MVF RETAIL PRODUCT 45T

MALE ABA 45T 1419986 FEBRUARY 13 2007

G A R PRECISION 1680
G A R RETAIL PRODUCT 1238634
 G A R EXT 4927

TEHAMA BANDO 155
 9J9 G A R 856
 N BAR EMULATION EXT
 G A R TRAVELER 641

BUSHS GRAND DESIGN
MVF MISS EVA 79R 1290446
 BROOKMORE MISS EVA 35J

BON VIEW NEW DESIGN 1407
 BUSHS LADY DIVIDEND 872
 CONNELLY DATELINE
 BROOKMORE MISS EVA 111G

ACT. BW	ADJ. 205	ADJ. 365	EPDS					DAM'S AGE				
			BW	WW	YW	MILK	TM					
89	679	1300	+3.5	35%	+50	26%	+90	24%	+23	20%	+48	2

Wt. 3/3/09: 2000 lbs.

938

MVF WIDESPREAD 181T

MALE ABA 181T 1420022 MARCH 20 2007

WHITSTONE WIDESPREAD MB
WESTERN WIDESPREAD 1L 1041526
BDM BLUE LADY ERICA 126'95

N BAR EMULATION EXT
M B RACHEL 2173
CUDLOBE EXON 35C
BAR DOUBLE M BLUE LADY ERICA 1

V F VENTURE FORWARD
BxB VENTURE FWD 209L 1124117
BxB MISS WONDERER 172J

V D A R TRAVELER 722
LANDMARK FRED A 911
SANDY BAR WONDERER 22G
GP ADMINISTRATOR QUEEN 17Z

ACT. BW	ADJ. 205	ADJ. 365	EPDS					DAM'S AGE				
			BW	WW	YW	MILK	TM					
88	613	1135	+4.0	33%	+36	24%	+64	22%	+18	16%	+36	6

Wt. 3/3/09: 1636 lbs.



LOT 939 - MVF GRID MAKER 131T

939

MVF GRID MAKER 131T

MALE ABA 131T 1419854 MARCH 07 2007

G D A R TRAVELER 044
G A R GRID MAKER 1129870
G A R PRECISION 2536

D H D TRAVELER 6807
G D A R BLACKCAP LADY 840
G A R PRECISION 1680
G A R EXT 2104

V F VENTURE FORWARD
BxB MISS VENTURE 118L 1124114
BxB MISS EXT 100J

V D A R TRAVELER 722
LANDMARK FRED A 911
N BAR EMULATION EXT
TRAILVIEW LASS 41'97

ACT. BW	ADJ. 205	ADJ. 365	EPDS					DAM'S AGE				
			BW	WW	YW	MILK	TM					
101	829	1405	+4.8	33%	+55	25%	+103	23%	+16	21%	+44	6

Wt. 3/3/09: 1930 lbs.

940

MVF NEW FRONTIER 218T

MALE ABA 218T 1419869 MARCH 29 2007

B/R NEW FRONTIER 095
MVF FRONTIER 25P 1232673
MVF FAVORITE 58L

B/R NEW DESIGN 036
WHITE FENCE PRIDE H1
TC STOCKMAN 365
CAN AM FAVORITE 12G

G D A UNIVERSE 726G
MVF TIBBIE 59M 1101842
MVKD TIBBIE 850H

PAPA UNIVERSE 515
G D A BONNY 412D
O S U 6T6 ULTRA
MVRB TIBBIE 24C

ACT. BW	ADJ. 205	ADJ. 365	EPDS					DAM'S AGE				
			BW	WW	YW	MILK	TM					
87	652	1289	+4.3	5%	+38	5%	+68	5%	+20	5%	+39	5

Wt. 3/3/09: 1732 lbs.

EPDs:

- Expected Progeny Differences are values that predict how the future progeny of an animal will perform relative to the progeny of other animals in the same breed.
- Are expressed in the units measured of that particular trait. For example, weaning weight is measured in pounds thus the weaning weight EPD is also expressed in pounds.
- Allow a fair comparison of breeding value by removing environmental bias such as climate, feed and special management.
- Are the best tool available to compare animals between herds, countries and year of birth.

BIRTH WEIGHT - BW - Predicts the difference in average birth weight of a bull's calves compared to the progeny of an average Black Angus bull.

WEANING WEIGHT - WW - Indicates the ability of a sire's calves to grow from birth to weaning compared to an average bull.

YEARLING WEIGHT - YW - Growth from birth to yearling, compared to the average.

MILK - A predictor of a sire's genetic merit for milk and mothering ability as expressed in his daughters as compared to daughters of an average Black Angus bull.

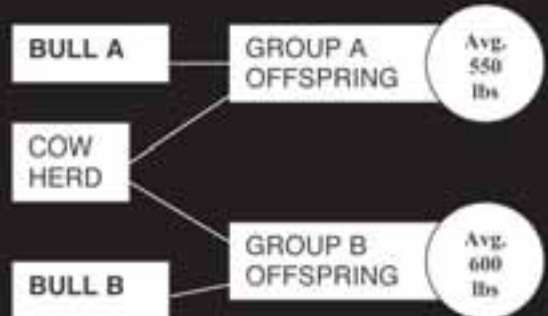
TOTAL MATERNAL - TM - Predicts the difference in weaning weights of the sire's daughters' progeny due to the combination of growth genetics and milking ability.

EPDs evaluate group averages and offspring's performance. They can not predict individual performance or weights.

For example, if Bull A (weaning weight EPD of +10) and Bull B (WW of +60) were randomly mated with ten similar cows, we would expect the group average weaning weight of Bull A's offspring to be 50 lbs lighter than that of Bull B's (60-10=50).

Calif	A	B
1	500	400
2	510	450
3	520	500
4	530	550
5	540	600
6	560	600
7	570	650
8	580	700
9	590	750
10	600	800
Avg.	550	600

Note that not all calves from Bull B have a higher weaning weight, but the average is 50 lbs higher.



EPD Averages for all Black Angus calves born in 2008

AVERAGE EPDS				
BW	WW	YW	MILK	TM
+3.1	+40	+71	+16	+31



MVF
Yearling Bulls



LOT 943
MVF DATELINE 159U



MVF VRD DATELINE 913P

941

MVF VRD DATELINE 81U

MALE ABA 81U 1452393 FEBRUARY 02 2008

VERMILION DATELINE 7078
MVF VRD DATELINE 913P 1232661
MVF LADY DI 60K

CONNEALY DATELINE
VERMILION BLACKBIRD 5044
MVBL LANCER 9F
DOUBLE AA LADY DI 744'94

MVBL ASSET 42H
DARLENE DOLLY OF N.B.A. 3K 1011703
TAFIKA 75E DOLLY 67G

TC STOCKMAN 365
MVRB TIBBIE 18D
HFNF EXTRAORDINARY 75E
TAFIKA TRENDY DOLLY 9Z

ACT. BW	ADJ. 205	ADJ. 365	EPDS					DAM'S AGE				
			BW	WW	YW	MILK	TM					
90	627	1355	+5.0	33%	+40	22%	+71	10%	+12	11%	+32	8

BW: +4.7 WW: +51 YW: +89 Milk: +18 TM: +44 YG: +38

- Undefeated Champion
- 2006 National Champion Bull at Farmfair in Edmonton
- 2006 Agribition Grand Champion Angus Bull in Regina
- BW: 96 lbs. WW: 995 lbs. Nov. 1/04 Adj. 365D: 1,488 lbs.
- Mature weight 2,626 lbs.
- Carcass - Mar: 6.00 BF: 7.62 REA: 13.98 %LMY: 62.32
- A bull that adds carcass quality, hair coat, thickness, depth and performance

942

MVF VRD DATELINE 110U

MALE ABA 110U 1452818 FEBRUARY 12 2008

VERMILION DATELINE 7078
MVF VRD DATELINE 913P 1232661
MVF LADY DI 60K

CONNEALY DATELINE
VERMILION BLACKBIRD 5044
MVBL LANCER 9F
DOUBLE AA LADY DI 744'94

MVHF INNOVATOR 49B
MVF HIGHLIGHT 69E 833574
PYRAMID HI LITE 11X

TC STOCKMAN
MVF TIBBIE 15T
DAMERON LINEDRIVE
4 G HI LITE

ACT. BW	ADJ. 205	ADJ. 365	EPDS					DAM'S AGE				
			BW	WW	YW	MILK	TM					
87	655	1285	+4.6	35%	+39	25%	+73	13%	+15	15%	+35	13

943

MVF DATELINE 159U

MALE ABA 159U 1452828 FEBRUARY 24 2008

VERMILION DATELINE 7078
MVF VRD DATELINE 913P 1232661
MVF LADY DI 60K

CONNEALY DATELINE
VERMILION BLACKBIRD 5044
MVBL LANCER 9F
DOUBLE AA LADY DI 744'94

BELL TOUCHSTONE 2D
MVRB TIBBIE 125K 1017529
MVRB TIBBIE 123F

CENTURY TOUCHSTONE 131
BELL BLACKLASS 16Z
CH 054 RITO 0100
MVF TIBBIE 48W

ACT. BW	ADJ. 205	ADJ. 365	EPDS					DAM'S AGE				
			BW	WW	YW	MILK	TM					
97	696	1351	+5.2	35%	+42	24%	+72	12%	+16	12%	+37	8

944

MVF DATELINE 161U

MALE ABA 161U 1452496 FEBRUARY 25 2008

VERMILION DATELINE 7078
MVF VRD DATELINE 913P 1232661
 MVF LADY DI 60K

CONNELLY DATELINE
 VERMILION BLACKBIRD 5044
 MVBL LANCER 9F
 DOUBLE AA LADY DI 744'94

WESTERN WIDESPREAD 1L
MVF BEAUTY 188R 1290362
 BEAUTY MCB 57'91

WHITSTONE WIDESPREAD MB
 BDM BLUE LADY ERICA 126'95
 CANADIAN BIG PROMISE D G
 BEAUTY MCB 72'82

ACT. BW	ADJ. 205	ADJ. 365	EPDS					DAM'S AGE				
			BW	WW	YW	MILK	TM					
72	691	1326	+2.1	34%	+41	24%	+65	11%	+14	12%	+35	3



LOT 948 - MVF DATELINE 213U

945

MVF DATELINE 185U

MALE ABA 185U 1452401 FEBRUARY 27 2008

VERMILION DATELINE 7078
MVF VRD DATELINE 913P 1232661
 MVF LADY DI 60K

CONNELLY DATELINE
 VERMILION BLACKBIRD 5044
 MVBL LANCER 9F
 DOUBLE AA LADY DI 744'94

MCRAE'S FOCUS 33F
MVF MISS ESSENCE 197L 1056532
 MVKD MISS ESSENCE 11G

STEVENSON FORTUNE 425C
 MCRAE'S BRITTANY 58Z
 BON VIEW EMULATION EXT 473
 JRM ALBERTA LASS 36B

ACT. BW	ADJ. 205	ADJ. 365	EPDS					DAM'S AGE				
			BW	WW	YW	MILK	TM					
91	630	1203	+4.0	34%	+34	24%	+59	12%	+12	12%	+29	7

948

MVF DATELINE 213U

MALE ABA 213U 1452504 MARCH 05 2008

VERMILION DATELINE 7078
MVF VRD DATELINE 913P 1232661
 MVF LADY DI 60K

CONNELLY DATELINE
 VERMILION BLACKBIRD 5044
 MVBL LANCER 9F
 DOUBLE AA LADY DI 744'94

MVF 234D TRAVELER 45N
MVF LUCY 154R 1290781
 MVF LUCY 236N

GDAR SVF TRAVELER 234D
 MVF GEORGINA 10K
 MVF DATELINE 50L
 KENOSEE PARK LUCY 73D

ACT. BW	ADJ. 205	ADJ. 365	EPDS					DAM'S AGE				
			BW	WW	YW	MILK	TM					
90	791	1312	+5.1	34%	+46	23%	+80	10%	+21	10%	+44	3

946

MVF DATELINE 203U

MALE ABA 203U 1452429 MARCH 01 2008

VERMILION DATELINE 7078
MVF VRD DATELINE 913P 1232661
 MVF LADY DI 60K

CONNELLY DATELINE
 VERMILION BLACKBIRD 5044
 MVBL LANCER 9F
 DOUBLE AA LADY DI 744'94

MVF STOCKMAN 79K
MVF TIBBIE 164N 1175027
 MVF TIBBIE 35A

TC STOCKMAN 365
 RRD TIBBIE 12E
 WALDECK SHOCKER
 MVF TIBBIE 17W

ACT. BW	ADJ. 205	ADJ. 365	EPDS					DAM'S AGE				
			BW	WW	YW	MILK	TM					
87	651	1186	+4.2	35%	+37	24%	+65	12%	+11	12%	+30	5

947

MVF DATELINE 207U

MALE ABA 207U 1452431 MARCH 03 2008

VERMILION DATELINE 7078
MVF VRD DATELINE 913P 1232661
 MVF LADY DI 60K

CONNELLY DATELINE
 VERMILION BLACKBIRD 5044
 MVBL LANCER 9F
 DOUBLE AA LADY DI 744'94

MVF STOCKMAN 005L
MVF MISS ESSENCE 253N 1175388
 MVF MISS ESSENCE 197L

TC STOCKMAN 365
 LENLOOK ROSEBUD 30G
 MCRAE'S FOCUS 33F
 MVKD MISS ESSENCE 11G

ACT. BW	ADJ. 205	ADJ. 365	EPDS					DAM'S AGE				
			BW	WW	YW	MILK	TM					
86	700	1232	+4.0	34%	+41	23%	+69	11%	+17	11%	+38	5

**OFFSPRING FROM
 BULLS PURCHASED
 QUALIFY FOR THE
 CANADIAN ANGUS
 CERTIFICATION PROGRAM**

For tags & more info contact:
 Canadian Angus Association
1-866-571-8093
 or visit
www.cdnangus.ca



LOT 949
MVF DATELINE 218U



MVF DATELINE 345R
BW: +4.2 WW: +53 YW: +89 Milk: +17 TM: +44 YG: +36

949

MVF DATELINE 218U

MALE ABA 218U 1452843 MARCH 07 2008

VERMILION DATELINE 7078
MVF VRD DATELINE 913P 1232661
MVF LADY DI 60K

CONNELLY DATELINE
VERMILION BLACKBIRD 5044
MVBL LANCER 9F
DOUBLE AA LADY DI 744'94

F A R KRUGERRAND 410H
MVF BELLE 111P 1222210
KENOSEE PARK BELLE 41D

KRUGERRAND OF DONAMERE 490
F A R ERIANNA 286F
KENOSEE PARK STOCKMAN 9B
KENOSEE PARK BELLE 32Z

ACT. BW	ADJ. 205	ADJ. 365	EPDS					DAM'S AGE				
			BW	WW	YW	MILK	TM					
90	717	1360	+4.8	34%	+47	24%	+81	12%	+13	12%	+37	4

950

MVF DATELINE 224U

MALE ABA 224U 1452845 MARCH 08 2008

VERMILION DATELINE 7078
MVF VRD DATELINE 913P 1232661
MVF LADY DI 60K

CONNELLY DATELINE
VERMILION BLACKBIRD 5044
MVBL LANCER 9F
DOUBLE AA LADY DI 744'94

ALBERDA TRAVELER 416
MVF TIBBIE 030L 1071211
RRD TIBBIE 12E

D H D TRAVELER 6807
ALBERDA QUEEN KIMBERLY 222
RITO 2100 G D A R
MVF TIBBIE 16C

ACT. BW	ADJ. 205	ADJ. 365	EPDS					DAM'S AGE				
			BW	WW	YW	MILK	TM					
86	694	1236	+4.0	34%	+43	24%	+78	13%	+18	14%	+40	7

951

MVF DATELINE 190U

MALE ABA 190U 1452427 FEBRUARY 28 2008

MVF VRD DATELINE 13M
MVF DATELINE 345R 1304761
MVF TIBBIE 69L

VERMILION DATELINE 7078
MVF ZARA LISA 24F
TC STOCKMAN 365
GREENBUSH TIBBIE 5H

MVF ELMO 56L
LAZY MC BLACKBIRD 7N 1193284
RAFTER IR BLACKBIRD 89K

GRAND ISLAND ELMO
MERIT FLORA 5035
RITO 2100 G D A R
STRATHMORE BLACKBIRD 3B

ACT. BW	ADJ. 205	ADJ. 365	EPDS					DAM'S AGE				
			BW	WW	YW	MILK	TM					
79	704	1303	+3.4	32%	+46	20%	+75	8%	+13	9%	+36	5

952

MVF DATELINE 199U

MALE ABA 199U 1452839 MARCH 01 2008

MVF VRD DATELINE 13M
MVF DATELINE 345R 1304761
MVF TIBBIE 69L

VERMILION DATELINE 7078
MVF ZARA LISA 24F
TC STOCKMAN 365
GREENBUSH TIBBIE 5H

G D A R EXECUTIVE 727
MVF ERROLLINE 85F 849173
WINDOVER ERROLLINE 9C

P J M POWER 291
G D A R RACHEL 5115
P S POWER PLAY
BANNER ERROLLINE 7S

ACT. BW	ADJ. 205	ADJ. 365	EPDS					DAM'S AGE				
			BW	WW	YW	MILK	TM					
89	744	1268	+4.3	33%	+41	22%	+69	12%	+18	11%	+39	12



**WE STAND BEHIND
EVERY BULL WE SELL!**



LOT 953 - MVF DATELINE 222U

955

MVF FREIGHTLINER 803U

MALE ABA 803U 1476153 ET FEBRUARY 04 2008

BON VIEW BANDO 598
CONNEALY FREIGHTLINER 964749
 JOANA ERICA OF CONANGA

TEHAMA BANDO 155
 BON VIEW DORA 56
 NICHOLS HEAVY DUTY X100
 JARNE ERICA OF CONANGA

GDAR SVF TRAVELER 234D
MVF ELLEN 26N 1184659
 MVF ELLEN 111J

TRAVELER 124 G D A R
 G D A R FOREVER LADY 718
 MVMM WESTERN RITO 47F
 BOTANY ANGUS ELLEN 14G

ACT. BW	ADJ. 205	ADJ. 365	EPDS					DAM'S AGE
			BW	WW	YW	MILK	TM	
62	551	1114	+3.0 5%	+4.6 5%	+85 5%	+18 5%	+41	5

953

MVF DATELINE 222U

MALE ABA 222U 1452844 MARCH 08 2008

MVF VRD DATELINE 13M
MVF DATELINE 345R 1304761
 MVF TIBBIE 69L

VERMILION DATELINE 7078
 MVF ZARA LISA 24F
 TC STOCKMAN 365
 GREENBUSH TIBBIE 5H

SITZ ALLIANCE 6595
BXB LADY ALLIANCE 303L 1124127
 MVRB TIBBIE 87J

SITZ TRAVELER 8180
 SITZ BARBARAMERE JET 2698
 MVS LIMITED EDITION 10E
 MVRB TIBBIE 130F

ACT. BW	ADJ. 205	ADJ. 365	EPDS					DAM'S AGE
			BW	WW	YW	MILK	TM	
90	698	1348	+4.7 32%	+46 21%	+83 11%	+19 10%	+42	7

956

MVF FREIGHTLINER 24U

MALE ABA 24U 1452459 JANUARY 16 2008

BON VIEW BANDO 598
CONNEALY FREIGHTLINER 964749
 JOANA ERICA OF CONANGA

TEHAMA BANDO 155
 BON VIEW DORA 56
 NICHOLS HEAVY DUTY X100
 JARNE ERICA OF CONANGA

BOYD BEEF MAKER 3069
MVF LADY 33S 1346840
 MVF LADY 11N

C A FUTURE DIRECTION 5321
 BOYD FOREVER LADY 7120
 MVF STOCKMAN 67J
 MVF LADY 34K

ACT. BW	ADJ. 205	ADJ. 365	EPDS					DAM'S AGE
			BW	WW	YW	MILK	TM	
83	703	1286	+2.6 33%	+46 25%	+90 18%	+20 19%	+43	2

954

MVMM DATELINE 288U

MALE MVMM 288U 1452384 MARCH 23 2008

MVF VRD DATELINE 13M
MVF DATELINE 345R 1304761
 MVF TIBBIE 69L

VERMILION DATELINE 7078
 MVF ZARA LISA 24F
 TC STOCKMAN 365
 GREENBUSH TIBBIE 5H

DESSA TRAVELER 4E
MVMM BLOSSOM 272N 1175399
 BELVIN LADY BLOSSOM 56'95

Q A S TRAVELER 23-4
 DOUBLE FOUR BARBARA 38Z
 BELVIN BOARDWALK 11'92
 BELVIN LADY BLOSSOM 9'89

ACT. BW	ADJ. 205	ADJ. 365	EPDS					DAM'S AGE
			BW	WW	YW	MILK	TM	
90	784	1346	+3.9 32%	+49 21%	+79 11%	+17 9%	+42	5

**30% OF THE BULLS
 ARE SUITABLE FOR
 CALVING EASE**



CONNEALY FREIGHTLINER

BW: +1.8 WW: +48 YW: +92 Milk: +18 TM: +42 YG: +44

- Freightliner is one of the greatest "Cow Makers" in the history of the Angus Breed.
- His daughters exhibit tremendous fertility, maternal ability and maintain body condition in any environment.
- Sons are deep ribbed thick made and easy fleshing.



LOT 954 - MVMM DATELINE 288U



LOT 957 - MVF PEACEMAKER 217U

959

MVF PEACEMAKER 231U

MALE ABA 231U 1472766 MARCH 10 2008

BON VIEW NEW DESIGN 878
S A V PEACEMAKER 3179 1298343
 S A V ELBA 1094

B/R NEW DESIGN 036
 BON VIEW GAMMER 85
 S A F 598 BANDO 5175
 S A V ELBA 7099

NETHERLEA LAD 17J
NETHERLEA PRIDE MISS 77R 1303395
 NETHERLEA MISS J 5K

TC STOCKMAN 365
 NETHERLEA LASSIE 6D
 FV AMBUSH MAX 51G
 MISS J OF WEST WINDS 24D

ACT. BW	ADJ. 205	ADJ. 365	EPDS						DAM'S AGE			
			BW	WW	YW	MILK	TM					
89	731	1412	+3.9	32%	+48	22%	+81	14%	+26	12%	+50	3

957

MVF PEACEMAKER 217U

MALE ABA 217U 1472734 MARCH 06 2008

BON VIEW NEW DESIGN 878
S A V PEACEMAKER 3179 1298343
 S A V ELBA 1094

B/R NEW DESIGN 036
 BON VIEW GAMMER 85
 S A F 598 BANDO 5175
 S A V ELBA 7099

PSF TRADEMARK 1K
WILBAR LADY ANN 326R 1265599
 WILBAR LADY ANN 532L

WIWA CREEK STOCKMAN 26'97
 ROSE HILL MISS DIANA 37F
 SASKALTA BARDOLENE 93H
 WILBAR LADY ANN 840A

ACT. BW	ADJ. 205	ADJ. 365	EPDS						DAM'S AGE			
			BW	WW	YW	MILK	TM					
84	729	1273	+3.8	35%	+50	25%	+84	18%	+25	13%	+50	3

960

MVF RITO 4D7 105U

MALE ABA 105U 1452413 FEBRUARY 12 2008

HYLINE RIGHT TIME 338
RITO 4D7 OF 2536 338 1305947
 G A R PRECISION 2536

LEACHMAN RIGHT TIME
 HYLINE PRIDE 265
 G A R PRECISION 1680
 G A R EXT 2104

MVF STOCKMAN 67J
MVF LADY 10N 1183989
 MVF LADY 34K

TC STOCKMAN 365
 MVF TIBBIE 14C
 MVBL LANCER 9F
 MVF LADY 604F

ACT. BW	ADJ. 205	ADJ. 365	EPDS						DAM'S AGE			
			BW	WW	YW	MILK	TM					
91	744	1333	+4.4	33%	+49	23%	+93	14%	+23	12%	+48	5

958

MVF PEACEMAKER 227U

MALE ABA 227U 1472719 MARCH 08 2008

BON VIEW NEW DESIGN 878
S A V PEACEMAKER 3179 1298343
 S A V ELBA 1094

B/R NEW DESIGN 036
 BON VIEW GAMMER 85
 S A F 598 BANDO 5175
 S A V ELBA 7099

KMK ALLIANCE 6595 187
MVF TIBBIE 28R 1290858
 MVF TIBBIE 123M

SITZ ALLIANCE 6595
 G A R EXT 916
 G D A UNIVERSE 726G
 MVF TIBBIE 132J

ACT. BW	ADJ. 205	ADJ. 365	EPDS						DAM'S AGE			
			BW	WW	YW	MILK	TM					
87	752	1529	+3.5	35%	+58	26%	+101	18%	+28	14%	+57	3

961

MVF RITO 4D7 152U

MALE ABA 152U 1468602 FEBRUARY 21 2008

HYLINE RIGHT TIME 338
RITO 4D7 OF 2536 338 1305947
 G A R PRECISION 2536

LEACHMAN RIGHT TIME
 HYLINE PRIDE 265
 G A R PRECISION 1680
 G A R EXT 2104

MVF FULLBACK 127J
MVF TIBBIE 59L 1056518
 MVRB TIBBIE 84F

RITO 9FB3 OF 5H11 FULLBACK
 MVF TIBBIE 14C
 V D A R NEW TREND 933
 MVF TIBBIE 48W

ACT. BW	ADJ. 205	ADJ. 365	EPDS						DAM'S AGE			
			BW	WW	YW	MILK	TM					
52	615	1248	-1.8	35%	+41	19%	+82	16%	+23	13%	+44	7



S A V PEACEMAKER 3179

BW: +2.6 WW: +48 YW: +91 Milk: +29 TM: +53 YG: +42



RITO 4D7 OF 2536 338

BW: -0.3 WW: +44 YW: +71 Milk: +16 TM: +38 YG: +27

962

MVF RITO 4D7 212U

MALE ABA 212U 1452403 MARCH 05 2008

HYLINE RIGHT TIME 338
RITO 4D7 OF 2536 338 1305947
G A R PRECISION 2536

LEACHMAN RIGHT TIME
HYLINE PRIDE 265
G A R PRECISION 1680
G A R EXT 2104

PAPA EQUATOR 2928
MVF TIBBIE 028M 1120712
MVF TIBBIE 10G

PAPA POWER 096
PAPA ENVIUS BLACKBIRD 8849
BON VIEW EMULATION EXT 473
MVHF TIBBIE 39B

ACT. BW	ADJ. 205	ADJ. 365	EPDS					DAM'S AGE				
			BW	WW	YW	MILK	TM					
91	745	1427	+4.2	34%	+49	24%	+90	16%	+23	13%	+48	6



LOT 962 - MVF RITO 4D7 212U

963

MVF GRID MAKER 111U

MALE ABA 111U 1452817 FEBRUARY 12 2008

G D A R TRAVELER 044
G A R GRID MAKER 1129870
G A R PRECISION 2536

D H D TRAVELER 6807
G D A R BLACKCAP LADY 840
G A R PRECISION 1680
G A R EXT 2104

MVF MACKENZIE 24A
ELLEN ERICA E9 828169
ELLEN ERICA MCB 137'84

GRUBBS MACKENZIE
MVF ELBA 30W
GREENBRAE CHAIRMAN
ELLEN ERICA MCB 42'77

ACT. BW	ADJ. 205	ADJ. 365	EPDS					DAM'S AGE				
			BW	WW	YW	MILK	TM					
93	734	1376	+5.3	36%	+52	26%	+93	19%	+10	22%	+36	13

964

MVF GRID MAKER 210U

MALE ABA 210U 1452841 MARCH 04 2008

G D A R TRAVELER 044
G A R GRID MAKER 1129870
G A R PRECISION 2536

D H D TRAVELER 6807
G D A R BLACKCAP LADY 840
G A R PRECISION 1680
G A R EXT 2104

MVF STOCKMAN 122H
MVF HILITE 74K 1017429
MVF HIGHLIGHT 69E

TC STOCKMAN 365
MVF TIBBIE 14C
MVHF INNOVATOR 49B
PYRAMID HI LITE 11X

ACT. BW	ADJ. 205	ADJ. 365	EPDS					DAM'S AGE				
			BW	WW	YW	MILK	TM					
89	754	1330	+5.1	36%	+53	27%	+97	19%	+15	21%	+42	8



GAR GRID MAKER

BW: +5.9 WW: +69 YW: +122 Milk: +10 TM: +45 YG: +52

- Very few bulls approach Grid Maker's ability to add power and muscle to a calf crop - his dam 2536 has truly raised the bar in terms of performance Angus cows and her strength comes through in Grid Maker calves
- WW, YW & REA all rank in the top 1% of the breed

965

MVF NETWORTH 806U

MALE ABA 806U 1476156 ET FEBRUARY 13 2008

S A V 8180 TRAVELER 004
S A V NET WORTH 4200 1309743
S A V MAY 2410

SITZ TRAVELER 8180
BOYD FOREVER LADY 8003
S A F 598 BANDO 5175
S A V MAY 6269

TC STOCKMAN 365
MVF GEORGINA 83L 1056431
WAVY GEORGINA 2C

TC STOCKMAN
TC PRIDE 0014
RITO 2100 G D A R
WAVY GEORGINA 1S

ACT. BW	ADJ. 205	ADJ. 365	EPDS					DAM'S AGE				
			BW	WW	YW	MILK	TM					
76	582	1168	+3.9	5%	+43	5%	+78	5%	+22	5%	+43	7

966

MVF NET WORTH 206U

MALE ABA 206U 1452840 MARCH 03 2008

S A V 8180 TRAVELER 004
S A V NET WORTH 4200 1309743
S A V MAY 2410

SITZ TRAVELER 8180
BOYD FOREVER LADY 8003
S A F 598 BANDO 5175
S A V MAY 6269

MVF STOCKMAN 67J
MVF GEORGINA 52L 1056498
MVF GEORGINA 62F

TC STOCKMAN 365
MVF TIBBIE 14C
RONAN R ALBERTAN 2D
WAVY GEORGINA 2C

ACT. BW	ADJ. 205	ADJ. 365	EPDS					DAM'S AGE				
			BW	WW	YW	MILK	TM					
88	634	1277	+3.6	36%	+40	26%	+80	18%	+17	11%	+37	7



SAV NET WORTH 4200

BW: +4.6 WW: +61 YW: +116 Milk: +29 TM: +60 YG: +55

- Net Worth is a performance power house.
- He recorded an individual 205 day weight of 995 lbs., a 365 day weight of 1573 lbs. with an 17.2 REA at scan time



LOT 967 - MVF ALLIANCE 75U



WESTERN WIDESPREAD 1L

BW: +6.1 WW: +55 YW: +93 Milk: +17 TM: +45 YG: +38

967

MVF ALLIANCE 75U

MALE ABA 75U 1452479 FEBRUARY 06 2008

SITZ ALLIANCE 6595
KMK ALLIANCE 6595 187 1191922
 G A R EXT 916

SITZ TRAVELER 8180
 SITZ BARBARAMERE JET 2698
 N BAR EMULATION EXT
 G A R BANDO 338

WESTERN WIDESPREAD 1L
MVF EULIMA 338R 1304720
 MVF EULIMA 119L

WHITESTONE WIDESPREAD MB
 BDM BLUE LADY ERICA 126'95
 MVF FULLBACK 127J
 MVF EULIMA 96E

ACT. BW	ADJ. 205	ADJ. 365	EPDS					DAM'S AGE				
			BW	WW	YW	MILK	TM					
88	725	1415	+5.4	35%	+54	25%	+93	18%	+18	18%	+45	3

969

MVF WIDESPREAD 246U

MALE ABA 246U 1452850 MARCH 15 2008

WHITESTONE WIDESPREAD MB
WESTERN WIDESPREAD 1L 1041526
 BDM BLUE LADY ERICA 126'95

N BAR EMULATION EXT
 M B RACHEL 2173
 CUDLOBE EXON 35C
 BAR DOUBLE M BLUE LADY ERICA 1

KBJ NIGHT TRAIN 384H
LLB FAVORITE 143K 1018359
 CAN AM FAVORITE 12G

CRESCENT CREEK MAXIMUM 37C
 KBJ MISS ROSE 136D
 RITO 9FB3 OF 5H11 FULLBACK
 CAN AM FAVORITE 32B

ACT. BW	ADJ. 205	ADJ. 365	EPDS					DAM'S AGE				
			BW	WW	YW	MILK	TM					
92	710	1244	+5.7	34%	+49	25%	+85	16%	+17	17%	+42	8

968

MVF RETAIL PRODUCT 95U

MALE ABA 95U 1452532 FEBRUARY 11 2008

G A R PRECISION 1680
G A R RETAIL PRODUCT 1238634
 G A R EXT 4927

TEHAMA BANDO 155
 9J9 G A R 856
 N BAR EMULATION EXT
 G A R TRAVELER 641

WESTERN WIDESPREAD 1L
MVF TIBBIE 166S 1346846
 MVF TIBBIE 164N

WHITESTONE WIDESPREAD MB
 BDM BLUE LADY ERICA 126'95
 MVF STOCKMAN 79K
 MVF TIBBIE 35A

ACT. BW	ADJ. 205	ADJ. 365	EPDS					DAM'S AGE				
			BW	WW	YW	MILK	TM					
80	658	1306	+3.5	35%	+45	26%	+83	18%	+17	19%	+40	2

970

MVF WIDESPREAD 281U

MALE ABA 281U 1452512 MARCH 22 2008

WHITESTONE WIDESPREAD MB
WESTERN WIDESPREAD 1L 1041526
 BDM BLUE LADY ERICA 126'95

N BAR EMULATION EXT
 M B RACHEL 2173
 CUDLOBE EXON 35C
 BAR DOUBLE M BLUE LADY ERICA 1

B/R NEW FRONTIER 095
MVF GEORGINA 97P 1222319
 MVF GEORGINA 17J

B/R NEW DESIGN 036
 WHITE FENCE PRIDE H1
 YOUNG DALE MONARCH 12E
 WAVY GEORGINA 2C

ACT. BW	ADJ. 205	ADJ. 365	EPDS					DAM'S AGE				
			BW	WW	YW	MILK	TM					
90	786	1372	+5.3	35%	+51	26%	+86	17%	+17	17%	+43	4



LOT 968 - MVF RETAIL PRODUCT 95U



**RANGE READY YEARLING
 & 2 YEAR OLD BULLS**

971

MVF WIDESPREAD 247U

MALE ABA 247U 1452435 MARCH 15 2008

WESTERN WIDESPREAD 1L
MVF WIDESPREAD 273P 1222332
 MVF ELLEN 111J

WHITESTONE WIDESPREAD MB
 BDM BLUE LADY ERICA 126'95
 MVMM WESTERN RITO 47F
 BOTANY ANGUS ELLEN 14G

VERMILION DATELINE 7078
MVF HEATHER 30M 1101723
 HEATHER OF PEAK DOT 521E

CONNELLY DATELINE
 VERMILION BLACKBIRD 5044
 HF WALK-ON 14C
 HEATHER OF PEAK DOT 54M

ACT. BW	ADJ. 205	ADJ. 365	EPDS					DAM'S AGE				
			BW	WW	YW	MILK	TM					
89	740	1333	+3.4	35%	+52	24%	+85	12%	+18	11%	+44	6



LOT 971 - MVF WIDESPREAD 247U

972

MVF WIDESPREAD 295U

MALE ABA 295U 1452443 MARCH 25 2008

WESTERN WIDESPREAD 1L
MVF WIDESPREAD 273P 1222332
 MVF ELLEN 111J

WHITESTONE WIDESPREAD MB
 BDM BLUE LADY ERICA 126'95
 MVMM WESTERN RITO 47F
 BOTANY ANGUS ELLEN 14G

SITZ ALLIANCE 6595
BXB MISS ALLIANCE 242L 1124125
 MVF GEORGINA 21J

SITZ TRAVELER 8180
 SITZ BARBARAMERE JET 2698
 MVS LIMITED EDITION 10E
 MVF GEORGINA 62F

ACT. BW	ADJ. 205	ADJ. 365	EPDS					DAM'S AGE				
			BW	WW	YW	MILK	TM					
87	683	1300	+3.6	34%	+46	23%	+75	11%	+17	11%	+40	7



**PLEASE JOIN US
 FOR LUNCH PRIOR TO
 THE SALE AT 11:30 AM**



**LOT 973
 MVF VENTURE 129U**

973

MVF VENTURE 129U

MALE ABA 129U 1452485 FEBRUARY 15 2008

V F VENTURE FORWARD
BXB VENTURE SON 9P 1280124
 BXB DATELINE 50M

V D A R TRAVELER 722
 LANDMARK FRED A 911
 VERMILION DATELINE 7078
 MVF EVENING TINGE 70F

WESTERN WIDESPREAD 1L
MVF HILITE 347R 1304705
 MVF HILITE 121J

WHITESTONE WIDESPREAD MB
 BDM BLUE LADY ERICA 126'95
 MCRAE'S FOCUS 33F
 PYRAMID HI LITE 11X

ACT. BW	ADJ. 205	ADJ. 365	EPDS					DAM'S AGE				
			BW	WW	YW	MILK	TM					
87	687	1231	+4.5	33%	+39	22%	+71	10%	+17	10%	+37	3



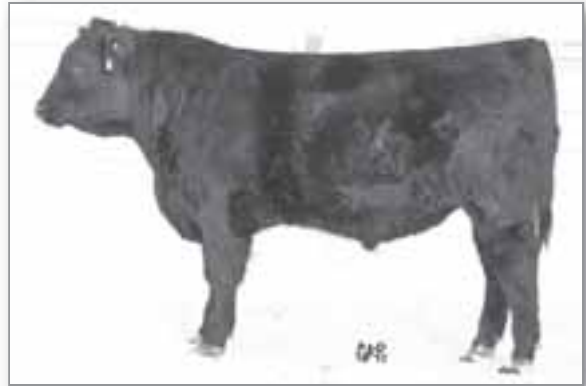
VF Venture Forward - Sire of BXB Venture Son 9P

BXB VENTURE SON 9P

BW: +3.2 WW: +40 YW: +77 Milk: +26 TM: +46 YG: +36



LOT 976 - MVF VENTURE 174U



LOT 977 - MVF VENTURE 175U

974

MVF VENTURE 142U

MALE ABA 142U 1452491 FEBRUARY 18 2008

V F VENTURE FORWARD
BXB VENTURE SON 9P 1280124
 BXB DATELINE 50M

V D A R TRAVELER 722
 LANDMARK FREDA 911
 VERMILION DATELINE 7078
 MVF EVENING TINGE 70F

WESTERN WIDESPREAD 1L
MVF TIBBIE 318R 1304704
 MVRB TIBBIE 25J

WHITESTONE WIDESPREAD MB
 BDM BLUE LADY ERICA 126'95
 YOUNG DALE MONARCH 12E
 MVRB TIBBIE 77E

ACT. BW	ADJ. 205	ADJ. 365	EPDS					DAM'S AGE				
			BW	WW	YW	MILK	TM					
86	706	1341	+5.6	33%	+45	22%	+81	9%	+19	10%	+42	3

976

MVF VENTURE 174U

MALE ABA 174U 1452402 TWIN FEBRUARY 27 2008

V F VENTURE FORWARD
BXB VENTURE SON 9P 1280124
 BXB DATELINE 50M

V D A R TRAVELER 722
 LANDMARK FREDA 911
 VERMILION DATELINE 7078
 MVF EVENING TINGE 70F

WESTERN WIDESPREAD 1L
MVF TRIM LASS 332R 1304706
 LLB TRIM LASS 316J

WHITESTONE WIDESPREAD MB
 BDM BLUE LADY ERICA 126'95
 LLB MAXIMUM 3F
 LLB TRIM LASS 065B

ACT. BW	ADJ. 205	ADJ. 365	EPDS					DAM'S AGE				
			BW	WW	YW	MILK	TM					
71	736	1202	+4.9	5%	+44	5%	+79	5%	+20	5%	+42	3

975

MVF VENTURE 151U

MALE ABA 151U 1452538 FEBRUARY 20 2008

V F VENTURE FORWARD
BXB VENTURE SON 9P 1280124
 BXB DATELINE 50M

V D A R TRAVELER 722
 LANDMARK FREDA 911
 VERMILION DATELINE 7078
 MVF EVENING TINGE 70F

WESTERN WIDESPREAD 1L
MVF BELL 194S 1346848
 MVF BELL 186N

WHITESTONE WIDESPREAD MB
 BDM BLUE LADY ERICA 126'95
 MVF FULLBACK 127J
 MVF BELL 118A

ACT. BW	ADJ. 205	ADJ. 365	EPDS					DAM'S AGE				
			BW	WW	YW	MILK	TM					
81	760	1282	+4.1	31%	+49	21%	+84	9%	+22	10%	+47	2

977

MVF VENTURE 175U

MALE ABA 175U 1452497 TWIN FEBRUARY 27 2008

V F VENTURE FORWARD
BXB VENTURE SON 9P 1280124
 BXB DATELINE 50M

V D A R TRAVELER 722
 LANDMARK FREDA 911
 VERMILION DATELINE 7078
 MVF EVENING TINGE 70F

WESTERN WIDESPREAD 1L
MVF TRIM LASS 332R 1304706
 LLB TRIM LASS 316J

WHITESTONE WIDESPREAD MB
 BDM BLUE LADY ERICA 126'95
 LLB MAXIMUM 3F
 LLB TRIM LASS 065B

ACT. BW	ADJ. 205	ADJ. 365	EPDS					DAM'S AGE				
			BW	WW	YW	MILK	TM					
72	681	1344	+4.9	5%	+44	5%	+79	5%	+20	5%	+42	3



**CHECK FOR UPDATED
 INFORMATION AT
www.MountainViewFarms.ca**





LOT 979 - MVF FRONTIER 205U



LOT 980 - MVF FRONTIER 249U

978

MVF FRONTIER 176U

MALE ABA 176U 1452542 FEBRUARY 27 2008

B/R NEW FRONTIER 095
MVF FRONTIER 25P 1232673
 MVF FAVORITE 58L

B/R NEW DESIGN 036
 WHITE FENCE PRIDE H1
 TC STOCKMAN 365
 CAN AM FAVORITE 12G

BXB VENTURE SON 9P
MVF TIFF 129S 1346883
 MVF TIFF 285P

V F VENTURE FORWARD
 BXB DATELINE 50M
 MVF HEADS UP 029M
 MVF TIFF 207M

ACT. BW	ADJ. 205	ADJ. 365	EPDS						DAM'S AGE			
			BW	WW	YW	MILK	TM					
86	745	1274	+3.9	33%	+44	21%	+81	8%	+20	8%	+42	2

980

MVF FRONTIER 249U

MALE ABA 249U 1452853 MARCH 16 2008

B/R NEW FRONTIER 095
MVF FRONTIER 25P 1232673
 MVF FAVORITE 58L

B/R NEW DESIGN 036
 WHITE FENCE PRIDE H1
 TC STOCKMAN 365
 CAN AM FAVORITE 12G

F A R KRUGERRAND 410H
MVF MAY 183P 1222367
 CAYMEN MAY 55'00

KRUGERRAND OF DONAMERE 490
 F A R ERIANNA 286F
 CONNEALY DATELINE
 MVF MAY 80H

ACT. BW	ADJ. 205	ADJ. 365	EPDS						DAM'S AGE			
			BW	WW	YW	MILK	TM					
82	674	1293	+3.3	33%	+43	23%	+85	11%	+17	11%	+39	4

979

MVF FRONTIER 205U

MALE ABA 205U 1452503 MARCH 03 2008

B/R NEW FRONTIER 095
MVF FRONTIER 25P 1232673
 MVF FAVORITE 58L

B/R NEW DESIGN 036
 WHITE FENCE PRIDE H1
 TC STOCKMAN 365
 CAN AM FAVORITE 12G

MVF HEADS UP 029M
MVF TIPTOP 372R 1304740
 MVF TIPTOP 73N

ANGUS ACRES HEADS UP 31D
 MVF TIBBIE 10G
 VERMILION DATELINE 7078
 BICKFORD TIPTOP 25Z

ACT. BW	ADJ. 205	ADJ. 365	EPDS						DAM'S AGE			
			BW	WW	YW	MILK	TM					
72	699	1445	+2.1	33%	+40	22%	+79	9%	+14	9%	+34	3



MVF NEW FRONTIER 25P

BW: +3.1 WW: +37 YW: +77 Milk: +19 TM: +38 YG: +39

MVF



THANKS TO ALL BUYERS & BIDDERS

NOTES**GENERAL INFORMATION**

CATTLE INSPECTION: All carry permanent identity tags, corresponding to Sale Lot Numbers. All shall be available for inspection prior to sale.

HEALTH STATUS: The bulls offered for the sale have been vaccinated for IBR, PI-3, BRSV, 8 WAY BLACK LEG, HEAMOPHILUS, SOMNUS AND PASTEURELLA HAEMOLYTICA. All were treated for internal and external parasites.

ALL CATTLE ARE SOLD: Subject to such tests as required for export under regulations of the Health of Animals Branch, Department of Agriculture for Canada - those corresponding to Bureau of Animal Industry requirements.

BREEDING GUARANTEE: All cattle are sound and right, and all with a responsible breeder guarantee of satisfaction. In the event of any unlikely dispute, the regular terms and conditions, standard with the Canadian Aberdeen Angus Association shall apply.

HOLDING AND SHIPMENTS: Approximately one week is required for export transfers and other documents to be processed. Export animals will be held at no charge and under excellent care. Joint export shipping arrangements to attain minimum shipping cost will gladly be made by the sale management if instructions to that effect are provided to clerk of the sale when settlement is made.

INTEREST: Mountain View Farms reserves the right to retain an interest in any of the animals selling.

INSURANCE: Ownership risk to purchaser commences when the Auctioneer's hammer falls. Livestock coverage will be available at the Clerk's desk from the appointed representatives on sale day, also from the Sales Management at any time.

TERMS OF SALE: Are cash or cheque at par, payable to Clerks of the Sale on Sale Day. U.S. Funds will be accepted at the current rate of exchange. No release will be given until satisfactory settlement has been made. We reserve the right to withhold animals from export shipment for whom payments have not been received prior to departure times.

ALL PERSONS who attend the Sale do so at their own risk, and the Owners, Sale Management and Sale Staff assume no liability, legal or otherwise, for property loss or for any accidents that may occur.

SALE INDEX

LOT	TATTOO	LOT	TATTOO	LOT	TATTOO
901	ABA 305T	928	ABA 391T	955	ABA 803U
902	ABA 331T	929	ABA 351T	956	ABA 24U
903	ABA 334T	930	ABA 357T	957	ABA 217U
904	ABA 337T	931	ABA 372T	958	ABA 227U
905	ABA 344T	932	ABA 199T	959	ABA 231U
906	ABA 347T	933	ABA 177T	960	ABA 105U
907	ABA 360T	934	ABA 211T	961	ABA 152U
908	ABA 380T	935	ABA 252T	962	ABA 212U
909	ABA 392T	936	ABA 15T	963	ABA 111U
910	ABA 396T	937	ABA 45T	964	ABA 210U
911	ABA 315T	938	ABA 181T	965	ABA 806U
912	ABA 359T	939	ABA 131T	966	ABA 206U
913	ABA 364T	940	ABA 218T	967	ABA 75U
914	ABA 323T	941	ABA 81U	968	ABA 95U
915	ABA 348T	942	ABA 110U	969	ABA 246U
916	ABA 358T	943	ABA 159U	970	ABA 281U
917	ABA 375T	944	ABA 161U	971	ABA 247U
918	ABA 387T	945	ABA 185U	972	ABA 295U
919	ABA 325T	946	ABA 203U	973	ABA 129U
920	ABA 327T	947	ABA 207U	974	ABA 142U
921	ABA 332T	948	ABA 213U	975	ABA 151U
922	ABA 350T	949	ABA 218U	976	ABA 174U
923	ABA 366T	950	ABA 224U	977	ABA 175U
924	ABA 368T	951	ABA 190U	978	ABA 176U
925	ABA 369T	952	ABA 199U	979	ABA 205U
926	ABA 378T	953	ABA 222U	980	ABA 249U
927	ABA 386T	954	ABA 288U		

**PLEASE JOIN US AT THESE
MOUNTAIN VIEW FARMS SALES**

MOUNTAIN VIEW FARMS
December 18, 2009 - Virden, Manitoba

**15TH ANNUAL
CATTLEMAN'S CONNECTION BULL SALE**
March 5, 2010 - Brandon, Manitoba

**8TH ANNUAL
MOUNTAIN VIEW FARMS SPRING BULL SALE**
April 16, 2010 - Virden, Manitoba